



# ALM Integration with Mobile Center

Software Version:

User Guide

Go to **HELP CENTER ONLINE**

<https://admhelp.microfocus.com/alm>

## Legal Notices

### Disclaimer

Certain versions of software and/or documents (“Material”) accessible here may contain branding from Hewlett-Packard Company (now HP Inc.) and Hewlett Packard Enterprise Company. As of September 1, 2017, the Material is now offered by Micro Focus, a separately owned and operated company. Any reference to the HP and Hewlett Packard Enterprise/HPE marks is historical in nature, and the HP and Hewlett Packard Enterprise/HPE marks are the property of their respective owners.

### Warranty

The only warranties for Seattle SpinCo, Inc. and its subsidiaries (“Seattle”) products and services are set forth in the express warranty statements accompanying such products and services. Nothing herein should be construed as constituting an additional warranty. Seattle shall not be liable for technical or editorial errors or omissions contained herein. The information contained herein is subject to change without notice.

### Restricted Rights Legend

Confidential computer software. Except as specifically indicated, valid license from Seattle required for possession, use or copying. Consistent with FAR 12.211 and 12.212, Commercial Computer Software, Computer Software Documentation, and Technical Data for Commercial Items are licensed to the U.S. Government under vendor's standard commercial license.

### Copyright Notice

© Copyright 2002 - 2018 EntIT Software LLC

### Trademark Notices

Adobe™ is a trademark of Adobe Systems Incorporated.

Microsoft® and Windows® are U.S. registered trademarks of Microsoft Corporation.

UNIX® is a registered trademark of The Open Group.

Oracle and Java are registered trademarks of Oracle and/or its affiliates.

# Contents

ALM Integration with Mobile Center .....	1
Introduction .....	4
Supported Versions .....	5
Configuring MC from ALM .....	6
Customizing MC Enabled Project .....	8
Setting Mobile Devices and Applications for Test Instances from ALM .....	9
Send Us Feedback .....	11

# Introduction

You can run your tests of your mobile applications directly from Application Lifecycle Management (ALM). These tests access the mobile devices and applications from your Mobile Center (MC) server and post the test results in ALM.

**Note:** This guide explains how to work with ALM in conjunction with MC. For details on using ALM, refer to the [ALM documentation](#). For details on using MC, refer to the [MC documentation](#).

This guide includes:

- ["Supported Versions" on the next page](#)
- ["Configuring MC from ALM" on page 6](#)
- ["Customizing MC Enabled Project" on page 8](#)
- ["Setting Mobile Devices and Applications for Test Instances from ALM" on page 9](#)

## Supported Versions


ALM	<ul style="list-style-type: none"><li>• 12.21 Patch 3 or later</li><li>• 12.53 Patch 1 or later</li></ul>
MC	2.01 or later

# Configuring MC from ALM

To enable the MC integration, configure the MC specific site parameters and enable your ALM project with the MC extension.

## 1. Configure MC parameters

In ALM Site Administration, click the **Site Configuration** tab. Define the following site parameters:

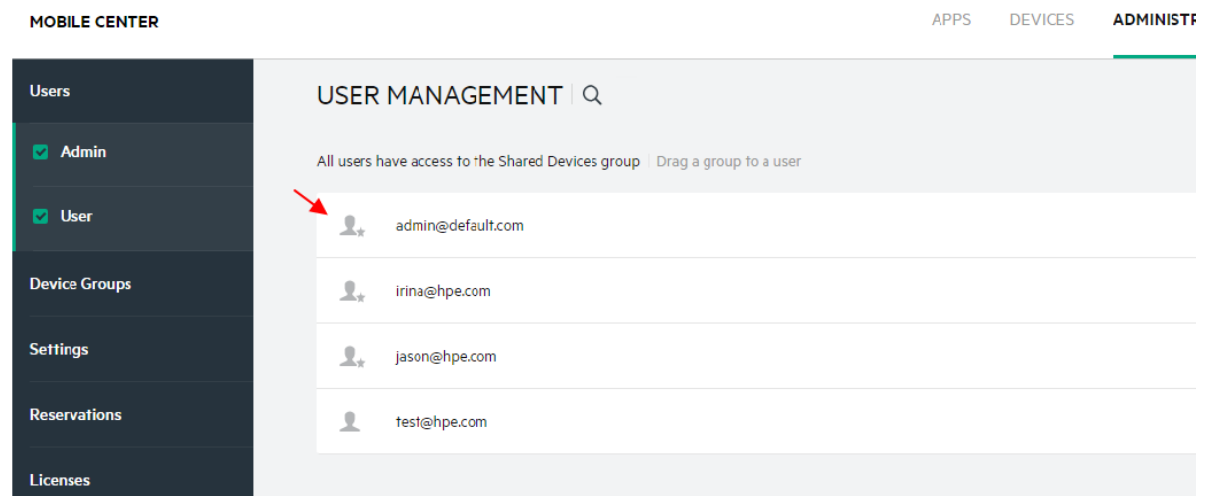
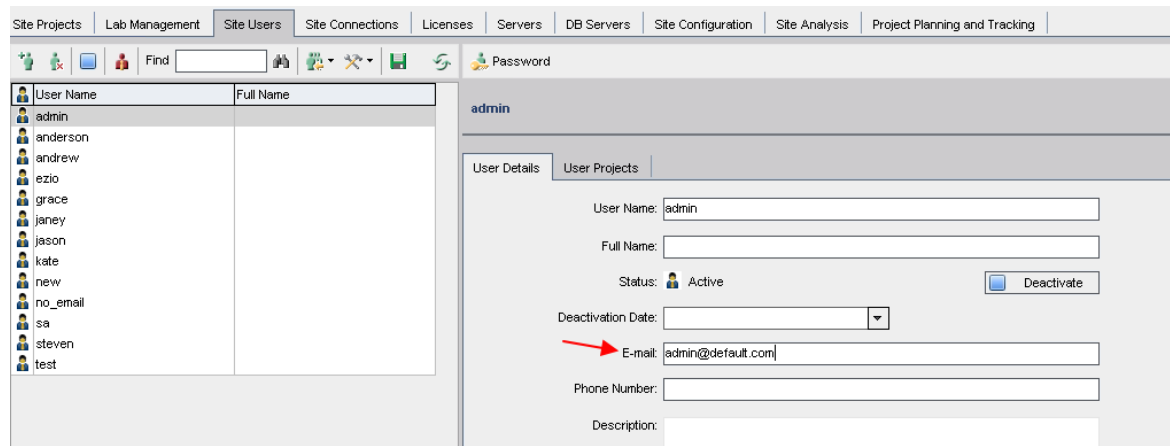
Parameter Name	Description
<b>MOBILE_CENTER_SERVER_HOST</b>	Enter the MC server IP address or FQDN (fully qualified domain name).
<b>MOBILE_CENTER_SERVER_PORT</b>	Enter the port number of the MC server.
<b>MOBILE_CENTER_SSL_ENABLED</b>	Set this parameter to Y, if MC uses an SSL connection (starting with https:). If SSL is not used, set it to "N".
<b>COMMUNICATION_SECURITY_PASSPHRASE</b>	If the communication between the ALM server and MC is enabled after authentication by a Single Sign-On (SSO) token, enter the appropriate value.   <b>Note:</b> The same value must be set in MC ( <b>Administration &gt; Settings &gt; General &gt; Single Sign On Init string</b> ).

## 2. Set email addresses for authorized users

In ALM Site Administration, click the **Site Users** tab.

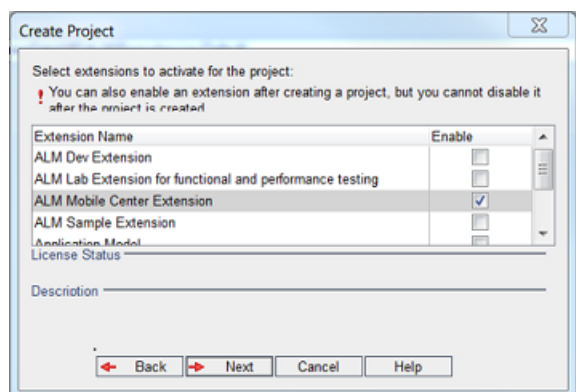
To allow users to run tests via the ALM and MC integration, in the **User Details** tab, make sure to define an email address for each user. The email address must match the email address defined in

### MC (Administration > Users).



### 3. Create MC enabled project

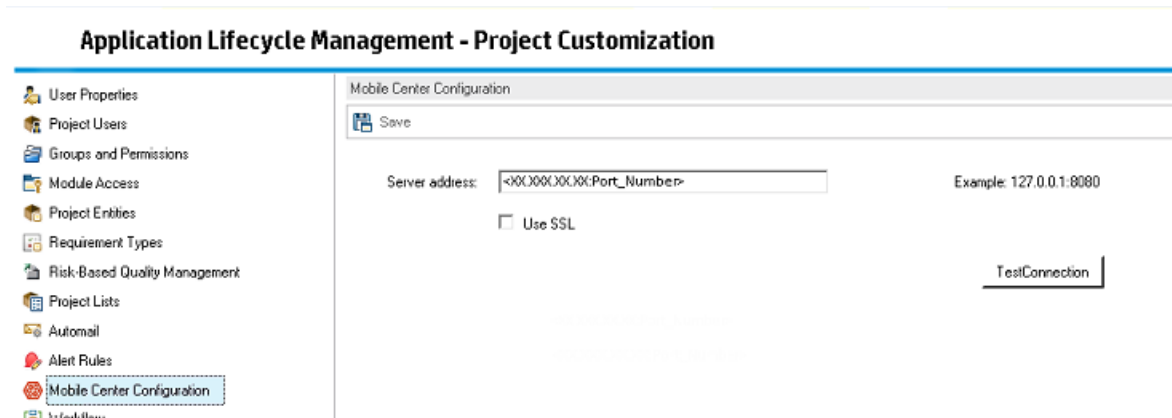
In Site Administration, click the **Site Projects** tab. Create a project. Make sure to enable the MC extension:



# Customizing MC Enabled Project

To meet your testing needs, you can customize your project by overriding the default MC configurations defined at the site level in Site Administration (e.g., server IP port and SSL). You customize your project using ALM Project Customization.

1. On the ALM masthead, click  and select **Customize**.
2. In the left pane, click **Mobile Center Configuration**.




3. In the **Server address** field, enter an MC server IP address or FQDN and port number.
4. If the server is SSL enabled, select **Use SSL**.
5. To test the connection to the MC server, click **Test Connection**.
6. Save and exit Project Customization and return to your ALM project.




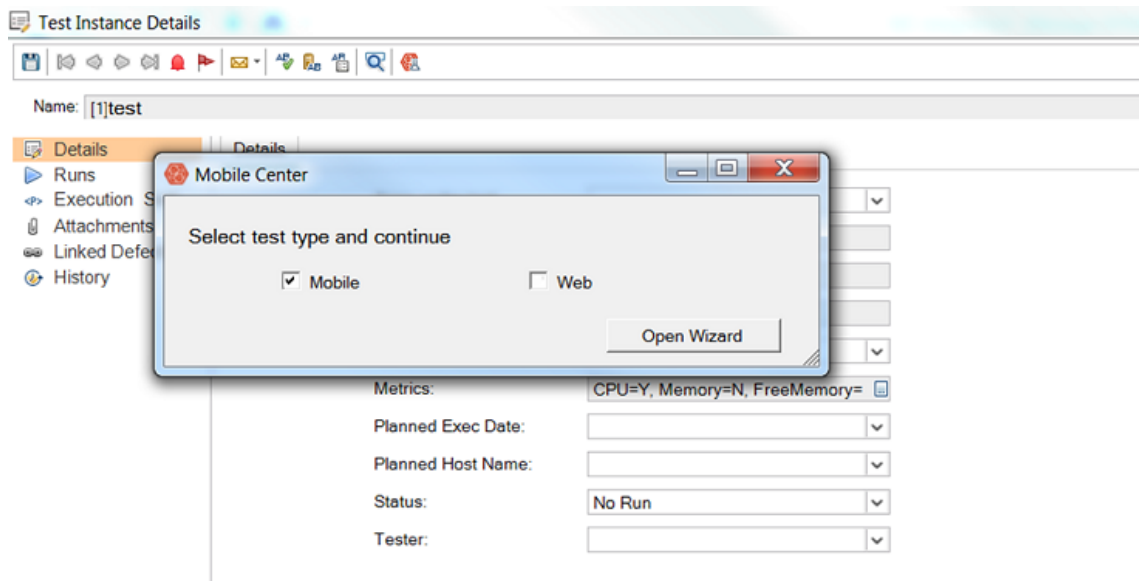
# Setting Mobile Devices and Applications for Test Instances from ALM

Assign mobile devices and applications for your test instances using the Mobile Center wizard.

## 1. Open the Mobile Center wizard

- a. On the ALM sidebar, under **Testing**, select **Test Lab**. Select a test set and click the **Execution Grid** tab.
- b. In the Execution Grid, select one or more test instances, Click .

Alternatively, in the Execution Grid, right-click the selected test instances and choose **Test Instance Details**. Click . The Mobile Center dialog box opens.



- c. To assign mobile devices and applications for your test instances, select one of the following types:

Type	Description
<b>Mobile</b>	Sets up the test for a native or hybrid mobile application.
<b>Web</b>	Sets up the test for a mobile web application.

- d. Click **Open Wizard**. The Mobile Center wizard opens. Assign mobile devices and applications for your test instances.
- e. Save and close the Mobile Center wizard.

## 2. View the mobile devices and applications set for your test instances

The following MC related fields can be viewed in the Execution Grid (you may need to customize the grid), or from the Test Instance Details dialog box.

<b>Field Name</b>	<b>Description</b>
<b>Apps Under Test</b>	The apps selected from the Mobile Center wizard.
<b>AUT Actions</b>	Install, uninstall, or restart applications as part of a test run.
<b>Device</b>	The unique device ID being used for emulation (phone, tablet, or both).
<b>Device Capability Filter</b>	A rule-based filter allowing you to select a device based on its capabilities.
<b>Device Labs</b>	The lab from which to choose a device.
<b>Launch on Start</b>	The application to launch when the device is started for the test.
<b>Metrics</b>	Collect device metrics collected from a device during a run session, such as CPU and memory, and logs.
<b>Test Type</b>	The selected test type: Mobile or Web.

# Send Us Feedback



Let us know how we can improve your experience with the User Guide.  
Send your email to: [docteam@microfocus.com](mailto:docteam@microfocus.com)