



ALM

Software Version: 15.0 - 15.0.1

Installation and Upgrade Guide - Windows

Go to **HELP CENTER ONLINE**

<http://admhelp.microfocus.com/alm>

Legal Notices

Disclaimer

Certain versions of software and/or documents (“Material”) accessible here may contain branding from Hewlett-Packard Company (now HP Inc.) and Hewlett Packard Enterprise Company. As of September 1, 2017, the Material is now offered by Micro Focus, a separately owned and operated company. Any reference to the HP and Hewlett Packard Enterprise/HPE marks is historical in nature, and the HP and Hewlett Packard Enterprise/HPE marks are the property of their respective owners.

Warranty

The only warranties for products and services of Micro Focus and its affiliates and licensors (“Micro Focus”) are set forth in the express warranty statements accompanying such products and services. Nothing herein should be construed as constituting an additional warranty. Micro Focus shall not be liable for technical or editorial errors or omissions contained herein. The information contained herein is subject to change without notice.

Restricted Rights Legend

Contains Confidential Information. Except as specifically indicated otherwise, a valid license is required for possession, use or copying. Consistent with FAR 12.211 and 12.212, Commercial Computer Software, Computer Software Documentation, and Technical Data for Commercial Items are licensed to the U.S. Government under vendor's standard commercial license.

Copyright Notice

© Copyright 2002 - 2019 Micro Focus or one of its affiliates.

Contents

ALM	1
Welcome to this Guide	8
Part 1: Installation Overview	9
Chapter 1: About ALM Technology and Architecture	11
Understanding the ALM Components	11
Example of Basic ALM Configuration	12
Example of Clustered ALM Configuration	13
Chapter 2: How to Install and Upgrade	15
Chapter 3: Common Installation Scenarios	17
New ALM Installation	17
Upgrade ALM with New Schema	18
Upgrade ALM with Copied Schema	19
Upgrade ALM with Same Server	20
Upgrade ALM with Same Database Server	21
Part 2: Patch Installation	23
Chapter 4: Installing ALM Patches	25
Pre-Installation Checks and Considerations	25
System Requirements	26
Required Permissions	26
Clustering Configuration	27
Installing the Patch	27
Uninstalling the Patch	29
Part 3: Installation Prerequisites	31
Chapter 5: Pre-Installation Checklist	33
Chapter 6: Prerequisites: Windows Operating Systems	37
System Configurations: Windows	37
Required Permissions: Windows	37
Clustering: Windows	38
ALM Repository Path: Windows	39
Chapter 7: Prerequisites: Oracle Database Servers	41
Connecting ALM to an Oracle Database Server	41
User Permissions for Connecting ALM to an Oracle Database Server	42
Database Administrative User Privileges	43
Project User Privileges	45

Site Administration Database Schema Considerations: Oracle	46
Oracle RAC Support	46
Chapter 8: Prerequisites: Microsoft SQL Database Servers	49
Connecting ALM to a Microsoft SQL Database Server	49
User Permissions for Connecting ALM to a Microsoft SQL Database Server	50
Site Administration Database Schema Considerations: SQL	52
Chapter 9: Prerequisites: General	53
License Activation	53
Security Passphrases	53
Mail Server Information	53
Java Installation	54
Oracle Java JDK or JRE	54
OpenJDK 8	54
Conflicting Applications	54
Chapter 10: Prerequisites: Client-side	55
System Configurations	55
Additional Considerations	55
Permissions Required to Download ALM Client Components	55
Internet Explorer Configuration	56
Enabling User Account Control (UAC)	57
Part 4: Pre-Installation Project Upgrade Steps	59
Chapter 11: Project Upgrade Considerations	61
Upgrade Versions	61
Suggested ALM System Configuration	61
Chapter 12: Project Upgrade Pre-Installation Activities	65
Back Up Projects in Existing ALM Installation	65
Verifying Domains and Projects	66
Verification Process Overview	66
Define an Exception File	66
Verify a Project	68
Verify a Domain	69
Repairing Domains and Projects	71
Repairing a Project	71
Repairing a Domain	73
Restoring Backed Up Projects and Repositories	74
Restoring Projects from a Microsoft SQL Database Server	74
Restoring Projects from an Oracle Database Server	75
Restoring a Repository from the File System	76
Restoring LAB_PROJECT	76
Verify Projects Again	76

Copy Site Administration Database Schema to the New Database Server	76
Chapter 13: Upgrading the Site Administration Database Schema	79
Schema Upgrade Guidelines	79
Recovering a Lost Confidential Data Passphrase	80
Managing Schema Changes	81
Part 5: ALM Installation and Configuration	85
Chapter 14: Installing ALM on Microsoft Windows Systems	87
Installation Considerations: Windows	87
Installing ALM: Windows	88
Installing ALM in Silent Mode: Windows	99
Configure the IIS Mail Service	100
Chapter 15: LAB_PROJECT Installation Considerations	101
Chapter 16: Starting ALM	103
Browsing the ALM Program Folder	103
Starting and Stopping ALM Services	103
Starting ALM on a Client Machine	103
Registering ALM on a Client Machine	105
Chapter 17: Integrating the ALM Application Server with a Web Server	107
Configuring IIS as a reverse proxy	107
Configuring IIS as a Secure Reverse Proxy	109
Configuring the IIS Web Server for SSL Offloading	110
Configuring Apache as a reverse proxy	110
Configuring Apache as a Secure Reverse Proxy	112
Configuring the Apache Web Server for SSL Offloading	113
Chapter 18: Managing the ALM Application Server	115
Changing the Heap Memory Size	115
Changing the Application Server Port Number	115
Configuring Secure Access on Windows Systems	116
Configure trust on the ALM server	116
Configure a secure connection to the ALM application server (Jetty)	117
Use TLS 1.2 instead TLS 1.1, TLS 1.0 or SSLv3	119
Redirect http to https	120
Set up encrypted communication with cookies	120
Configuring Secure Database Access	121
Application Server Management Tools	125
Chapter 19: Customizing System Files	127
Customizing Site Administration	127
Customizing the Site Administration Repository	127
Customizing the qcbn Application	128
Customizing Menus	128

Customizing the ALM System Tray Icon	130
Customizing the ALM Login Window	131
Display a message in the the Login window	131
Customize the background photo in the Login window	131
Chapter 20: Uninstalling ALM	133
Uninstalling ALM from Windows Systems	133
Removing ALM Client Components from a Client Machine	133
Part 6: Project Upgrade	135
Chapter 21: Upgrading Projects	137
Deactivate and Remove Projects from Existing ALM/Quality Center Installation	137
Copy Project Database Schemas to the New Database Server Machine	138
Restore ALM Projects in New Site Administration Database Schema	138
Upgrade Projects	140
About Upgrading Domains and Projects	141
Upgrading a Project	141
Upgrading a Domain	143
Chapter 22: Migrating the Project Repository	145
About the Repository Migration	145
Repository Migration Status Window	146
Configure Migration Priority	148
Part 7: Appendix	149
Appendix A: Troubleshooting the ALM Installation	151
Disabling Validation Checks for the Installation Wizard	151
Checking the Installation and Configuration Log Files	155
ALM Installation Already Exists	156
Database Validator Fails	156
Monitoring ALM Server Fails	157
Appendix B: Upgrade Preparation Troubleshooting	159
Overview	159
Quick Warning Reference	160
General Issues	160
Schema Issues	161
Data Issues	163
General Validation	164
Supported Database Version	164
Valid Database User Schema Name	164
Mixed Table Ownership	165
Database Permissions	165
Text Search Configuration	165

Schema Validation	167
Tables	168
Columns	169
Indexes and Constraints	172
Triggers	174
Sequences	175
Data Validation	176
Duplicate Values	176
Duplicate IDs	177
Tree Inconsistencies	177
Views	178
Orphaned Entities	179
Missing Entities	179
Missing Lists and/or List Values	180
Changing the Database User Schema	180
Missing Database Objects	181
Missing List Warning	181
Sequences Warning	181
Changed Database Objects	181
Extra Database Objects	182
Send Us Feedback	185

Welcome to this Guide

Welcome to Application Lifecycle Management (ALM). ALM empowers organizations to manage the core application lifecycle, from requirements through deployment, granting application teams the crucial visibility and collaboration needed for predictable, repeatable, and adaptable delivery of modern applications.

This help contains the following information:

- Step-by-step instructions for installing and configuring ALM.
- Step-by-step instructions for upgrading projects from earlier versions.
- Generic instructions for installing on ALM.

Part 1: Installation Overview

Chapter 1: About ALM Technology and Architecture

ALM is an enterprise-wide application that is based on Java 2 Enterprise Edition (J2EE) technology. J2EE technology provides a component-based approach to the design, development, assembly, and deployment of enterprise applications.

This section includes:

- [Understanding the ALM Components](#) 11
- [Example of Basic ALM Configuration](#) 12
- [Example of Clustered ALM Configuration](#) 13

Understanding the ALM Components

An ALM system contains the following components:

- **ALM client components.** When you open Application Lifecycle Management or Site Administration on your client machine, client components are downloaded to the machine. ALM client components interact with each other using .NET and COM technologies. The client communicates with the server over HTTP/S.
- **ALM server/Application server.** Client requests are dispatched by servlets to the deployed server. ALM comes with a built-in application server called the ALM Application Server. The deployed application contains Application Lifecycle Management, Site Administration, and associated files which are packaged into a Web Application Archive (WAR) file. Client requests from ALM are dispatched to the deployed application.

The Java Database Connectivity (JDBC) interface is used to communicate between the application server and database server(s).

The server can run on a Windows or Linux platform.
- **Database server(s).** The database server stores three types of schemas:
 - **Site Administration schema.** Stores information related to the ALM system, such as domains, users, and site parameters. A row exists in this schema for each project you create.

Irrespective of how you configure your system, there is always only one Site Administration schema.
 - **Lab_Project.** Stores lab information related to managing functional and performance testing on remote hosts, LoadRunner Enterprise server data, and licenses. There is always only one Lab_Project schema.
 - **Project schemas.** Stores project information, such as entity data and user data. A separate schema exists for every project you create.

By default, the project schemas are created on the same database server as the Site Administration schema. These default project schemas are useful for smaller setups. However, if you are working with a large number of projects or with a small number of huge projects, it may be advisable to define additional database servers solely for storing project schemas. You define additional servers in the Site Administration DB Servers tab. For details, refer to the *Micro Focus Application Lifecycle Management Administrator Guide*.

The schemas can reside on an Oracle or on a Microsoft SQL server. For detailed guidelines on deploying on the database server, refer to the *Micro Focus ALM Database Best Practices Guide*.

Note: To improve system performance, it is advisable that the ALM server and the Database server be installed on separate machines and be connected over LAN.

- **Project repository.** Stores all files to be used by all the projects in the system. For example, **.xml** files, templates, and attachments. By default the repository is located on the same machine as the application server, which is useful for smaller setups. For larger organizations however, or when working in a clustered environment, it is advisable to install the repository on a dedicated machine.

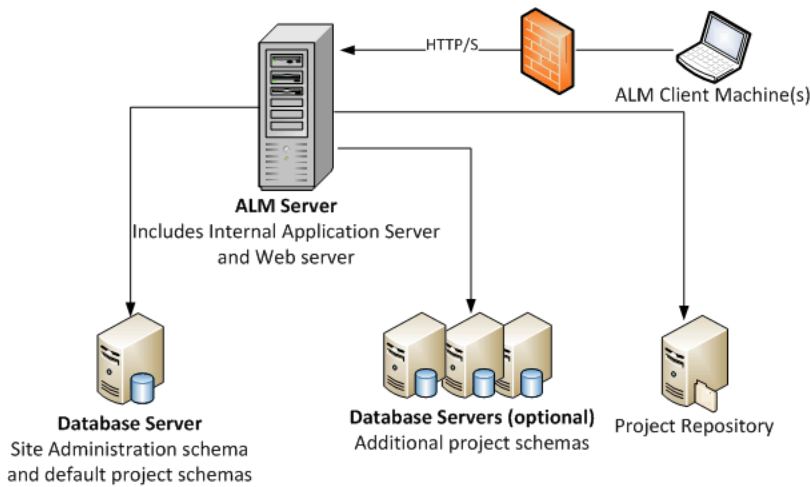
When working in a clustered environment, the repository must be accessible by all nodes.

- **Load balancer.** When working with a load balancer, client requests are transmitted to the load balancer and distributed according to server availability within the cluster.
- **Tanuki wrapper.** A Java service wrapper that allows ALM to be installed and controlled like a native Windows Service. It also includes advanced fault detection software to monitor ALM.

Example of Basic ALM Configuration

In the basic ALM configuration, the ALM Jetty application server and the web server are embedded with the installation and installed on the same machine.

The following diagram illustrates a basic ALM system configuration:



To enhance security in this configuration:

- Enable SSL on the ALM Jetty and make it required.

Alternatively, install an Apache or IIS web server acting as a reverse proxy in front of the ALM server and configure SSL on the reverse proxy server. This protects the ALM server and uses the IIS or Apache security related features to enhance ALM security.

For information on enabling SSL for all interactions with IIS, refer to <http://www.iis.net/>. SSL must be enabled for the entire IIS web server under which you install the ALM applications.

For information on enabling SSL for all interactions with Apache, refer to http://httpd.apache.org/docs/current/ssl/ssl_howto.html.

- Use a firewall and close access to all incoming traffic except for the https/http port used by ALM.

Example of Clustered ALM Configuration

Within the J2EE framework, ALM supports clustering. A cluster is a group of application servers that run as if they were a single system. Each application server in a cluster is referred to as a node.

Clusters provide mission-critical services to ensure maximum scalability. The load balancing technique within the cluster is used to distribute client requests across multiple application servers, making it easy to scale to an infinite number of users.

Take the following into consideration when setting up a clustered environment:

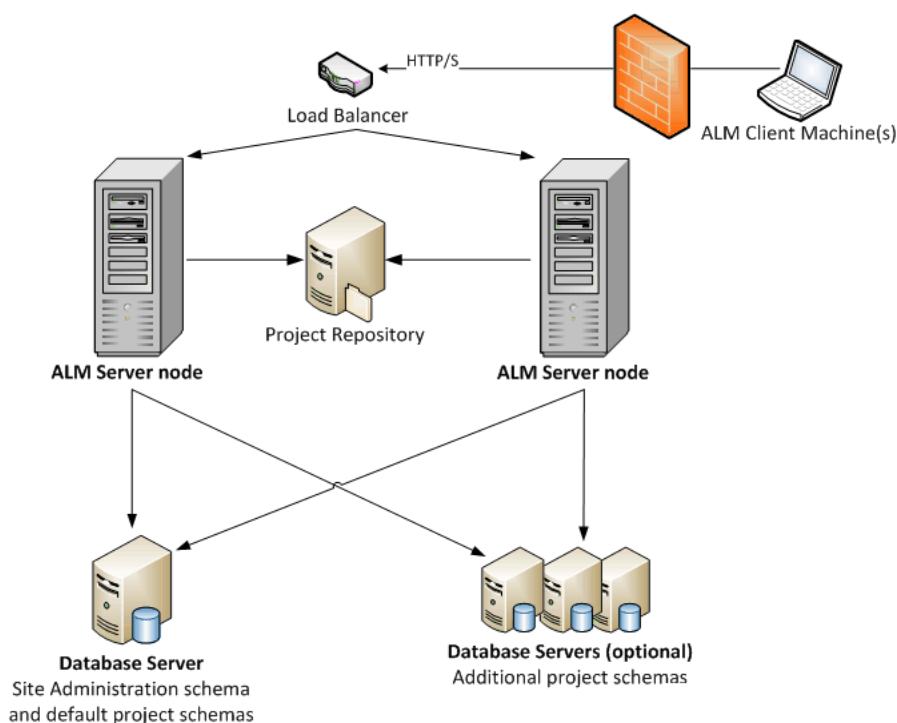
- All nodes must have access to the database server on which the Site Administration database schema resides.
- All nodes must have access to all database servers.

- All nodes must have access to the repository. By default the repository is located on the first node in the cluster, and therefore all other nodes must have access to the first node. If you install the repository on a dedicated machine, each node must have access to that machine.
- The load balancer must be configured with the ALM health monitor, using the following KeepAlive uniform resource identifier (URI):
 - Send String: GET /qcbn/servlet/tdservlet/
 - Receive String: up and running
- The load balancer must be configured with session persistency. Set the persistency to **sticky session enabled** or **destination address affinity**, depending on the load balancer.

To enhance security in this configuration:

- Require SSL for the ALM virtual IP on the load balancer.
- Use a firewall on each ALM server to block access to all incoming traffic except for the http port (8080) or https port (8443) used by ALM.
- If you have external clients connecting to the ALM deployment from outside the corporate firewall, place an Apache or IIS web server as a reverse proxy in front of the corporate firewall behind which the ALM servers are deployed, and require SSL on the reverse proxy.

The following diagram illustrates a clustered ALM system configuration:



Chapter 2: How to Install and Upgrade

This section presents an overview of the installation and upgrade processes described in this guide.

Note: For patch installations, refer to ["Installing ALM Patches "](#) on page 25.

Installing and upgrading ALM consists of the following steps:

1. Check that you meet all relevant installation prerequisites.

Before beginning the actual installation procedure, check that your ALM server machine's operating system, your database server, and your client machines, all meet the prerequisite criteria for working with ALM 15.0 . For details, see ["Installation Prerequisites" on page 31.](#)

2. (Upgrading) Check that you meet all relevant upgrade prerequisites.

If you are upgrading from an earlier version of ALM/Quality Center, it is important to carefully consider how to configure your new ALM system. This guide provides a suggested system configuration for upgrading projects from your existing system. Follow the suggested configuration as much as possible.

Before beginning the installation, verify and repair all projects in the existing system, and then back up the projects, the database, and the repository.

If you plan to upgrade a copy of the Site Administration database schema, you need the Confidential Data Passphrase that was used in the existing installation, and you must manage changes to the existing schema (if any).

For details, see ["Pre-Installation Project Upgrade Steps" on page 59.](#)

3. Install ALM 15.0 .

Install ALM 15.0 on your ALM server machine. The installation is guided by a step-by-step wizard. For details, see ["ALM Installation and Configuration" on page 85.](#)

4. (Upgrading) Upgrade projects from your existing ALM system.

Upgrade your existing projects to ALM 15.0 based on your system configuration. Note the project repository migration options. For details, see ["Project Upgrade" on page 135.](#)

Chapter 3: Common Installation Scenarios

There are many different scenarios in which you may need to install Application Lifecycle Management. This chapter lists the most common scenarios and provides you with links to the specific sections in this guide that you need to follow for your scenario.

- [New ALM Installation](#) 17
- [Upgrade ALM with New Schema](#) 18
- [Upgrade ALM with Copied Schema](#) 19
- [Upgrade ALM with Same Server](#) 20
- [Upgrade ALM with Same Database Server](#) 21

New ALM Installation

The table below lists the steps for the following scenario:

- **Installing ALM for the first time**
- Windows
- SQL database

Installation Step	Instructions
Prerequisites	<ul style="list-style-type: none">• "Prerequisites: Windows Operating Systems" on page 37• "Prerequisites: Microsoft SQL Database Servers" on page 49• "Prerequisites: General" on page 53• "Prerequisites: Client-side" on page 55
Installation	"Installing ALM on Microsoft Windows Systems" on page 87
Start ALM	"Starting ALM" on page 103
Manage ALM	<ul style="list-style-type: none">• "Managing the ALM Application Server" on page 115• "Customizing System Files" on page 127
Troubleshoot the Installation	"Troubleshooting the ALM Installation" on page 151

Upgrade ALM with New Schema

The table below lists the steps for the following scenario:

- Upgrading ALM to a new version
- Windows
- SQL database
- New ALM server
- New database server
- New Site Administration schema

Installation Step	Instructions
Prerequisites	<ul style="list-style-type: none"> • "Prerequisites: Windows Operating Systems" on page 37 • "Prerequisites: Microsoft SQL Database Servers" on page 49 • "Prerequisites: General" on page 53 • "Prerequisites: Client-side" on page 55
Project Upgrade Prerequisites	<ul style="list-style-type: none"> • "Back Up Projects in Existing ALM Installation" on page 65 • "Verifying Domains and Projects" on page 66 • "Upgrade Preparation Troubleshooting" on page 159 • "Repairing Domains and Projects" on page 71 • "Restoring Backed Up Projects and Repositories" on page 74
Installation	"Installing ALM on Microsoft Windows Systems" on page 87
Start ALM	"Starting ALM" on page 103
Project Upgrade	<ul style="list-style-type: none"> • "Deactivate and Remove Projects from Existing ALM/Quality Center Installation" on page 137 • "Copy Project Database Schemas to the New Database Server Machine" on page 138 • "Restore ALM Projects in New Site Administration Database Schema" on page 138 • "Upgrade Projects" on page 140 • "Migrating the Project Repository" on page 145 • LoadRunner Enterprise / LAB_PROJECT Post-Upgrade Steps
Manage ALM	<ul style="list-style-type: none"> • "Managing the ALM Application Server" on page 115 • "Customizing System Files" on page 127

Installation Step	Instructions
Troubleshoot the Installation	"Troubleshooting the ALM Installation" on page 151

Upgrade ALM with Copied Schema

The table below lists the steps for the following scenario:

- Upgrading ALM to a new version
- Windows
- SQL database
- New ALM server
- New database server
- Copying the existing Site Administration schema

Installation Step	Instructions
Prerequisites	<ul style="list-style-type: none"> • "Prerequisites: Windows Operating Systems" on page 37 • "Prerequisites: Microsoft SQL Database Servers" on page 49 • "Prerequisites: General" on page 53 • "Prerequisites: Client-side" on page 55
Project Upgrade Prerequisites	<ul style="list-style-type: none"> • "Back Up Projects in Existing ALM Installation" on page 65 • "Verifying Domains and Projects" on page 66 • "Upgrade Preparation Troubleshooting" on page 159 • "Repairing Domains and Projects" on page 71 • "Restoring Backed Up Projects and Repositories" on page 74 • "Copy Site Administration Database Schema to the New Database Server" on page 76 • "Upgrading the Site Administration Database Schema" on page 79
Installation	"Installing ALM on Microsoft Windows Systems" on page 87
Start ALM	"Starting ALM" on page 103
Project Upgrade	<ul style="list-style-type: none"> • "Upgrade Projects" on page 140 • "Migrating the Project Repository" on page 145 • LoadRunner Enterprise / LAB_PROJECT Post-Upgrade Steps

Installation Step	Instructions
Manage ALM	<ul style="list-style-type: none"> • "Managing the ALM Application Server" on page 115 • "Customizing System Files" on page 127
Troubleshoot the Installation	"Troubleshooting the ALM Installation" on page 151

Upgrade ALM with Same Server

The table below lists the steps for the following scenario:

- Upgrading ALM to a new version
- Windows
- SQL database
- Same ALM server
- New database server
- New Site Administration schema

Installation Step	Instructions
Prerequisites	<ul style="list-style-type: none"> • "Prerequisites: Windows Operating Systems" on page 37 • "Prerequisites: Microsoft SQL Database Servers" on page 49 • "Prerequisites: General" on page 53 • "Prerequisites: Client-side" on page 55
Project Upgrade Prerequisites	<ul style="list-style-type: none"> • "Back Up Projects in Existing ALM Installation" on page 65 • "Verifying Domains and Projects" on page 66 • "Upgrade Preparation Troubleshooting" on page 159 • "Repairing Domains and Projects" on page 71 • "Restoring Backed Up Projects and Repositories" on page 74
Installation	"Installing ALM on Microsoft Windows Systems" on page 87
Start ALM	"Starting ALM" on page 103

Installation Step	Instructions
Project Upgrade	<ul style="list-style-type: none"> • "Deactivate and Remove Projects from Existing ALM/Quality Center Installation" on page 137 • "Copy Project Database Schemas to the New Database Server Machine" on page 138 • "Restore ALM Projects in New Site Administration Database Schema" on page 138 • "Upgrade Projects" on page 140 • "Migrating the Project Repository" on page 145 • LoadRunner Enterprise / LAB_PROJECT Post-Upgrade Steps
Manage ALM	<ul style="list-style-type: none"> • "Managing the ALM Application Server" on page 115 • "Customizing System Files" on page 127
Troubleshoot the Installation	"Troubleshooting the ALM Installation" on page 151

Upgrade ALM with Same Database Server

The table below lists the steps for the following scenario:

- Upgrading ALM to a new version
- Windows
- SQL database
- New ALM server
- Same database server
- New Site Administration schema

Installation Step	Instructions
Prerequisites	<ul style="list-style-type: none"> • "Prerequisites: Windows Operating Systems" on page 37 • "Prerequisites: Microsoft SQL Database Servers" on page 49 • "Prerequisites: General" on page 53 • "Prerequisites: Client-side" on page 55

Installation Step	Instructions
Project Upgrade Prerequisites	<ul style="list-style-type: none"> • "Back Up Projects in Existing ALM Installation" on page 65 • "Verifying Domains and Projects" on page 66 • "Upgrade Preparation Troubleshooting" on page 159 • "Repairing Domains and Projects" on page 71 • "Restoring Backed Up Projects and Repositories" on page 74
Installation	"Installing ALM on Microsoft Windows Systems" on page 87
Start ALM	"Starting ALM" on page 103
Project Upgrade	<ul style="list-style-type: none"> • "Deactivate and Remove Projects from Existing ALM/Quality Center Installation" on page 137 • "Restore ALM Projects in New Site Administration Database Schema" on page 138 • "Upgrade Projects" on page 140 • LoadRunner Enterprise / LAB_PROJECT Post-Upgrade Steps
Manage ALM	<ul style="list-style-type: none"> • "Managing the ALM Application Server" on page 115 • "Customizing System Files" on page 127
Troubleshoot the Installation	"Troubleshooting the ALM Installation" on page 151

Part 2: Patch Installation

Chapter 4: Installing ALM Patches

This chapter provides general instructions for installing and uninstalling ALM patches.

- **Minor-minor patches**

Patches that are new minor-minor versions (for example ALM 12.01) do not necessarily contain changes to project database schemas. However, they cannot be rolled back once installed. For details about the Micro Focus version numbering scheme, refer to the *Application Lifecycle Management Administrator Guide*.

- **Patches with changes to project database schemas**

Patches that include changes to project database schemas upgrade ALM to a new minor-minor version (for example ALM 11.50 to ALM 11.52.) When installing such a patch, ALM automatically upgrades projects to the new minor-minor version. For details about the Micro Focus version numbering scheme and automatic upgrade of projects to a new minor-minor version, refer to the *Application Lifecycle Management Administrator Guide*.

To determine if the patch that you are installing changes project database schemas, refer to the *Release Notes*.



Caution: Uninstalling patches with changes to project database schemas is not supported. Before installing a patch with changes to project database schemas, back up all projects.



Note: Before installing a patch, review the "[Installation Considerations: Windows](#)" on [page 87](#) section for important installation information.

For specific instructions for the patch that you are installing, refer to the *Release Notes*.

This section includes:

- [Pre-Installation Checks and Considerations](#)25
- [Clustering Configuration](#)27
- [Installing the Patch](#)27
- [Uninstalling the Patch](#)29

Pre-Installation Checks and Considerations

Verify that the patch that you are installing is compatible with your version of ALM. You can verify the installed version of Micro Focus ALM by going to the **versions.xml** file located under **C:\ProgramData\Micro Focus\ALM\conf**

Refer to the patch *Release Notes* for prerequisite and compatibility information.

This section includes:

- [System Requirements](#) 26
- [Required Permissions](#) 26

System Requirements

Verify that your ALM server machine meets the ALM system configurations.

Note: For the most up-to-date supported environments, see <http://admhelp.microfocus.com/alm/specs/alm-qc-system-requirements.htm>.

Required Permissions

Verify that you have the required permissions to install ALM on a server machine.

To install an ALM patch on a Windows operating system:

- You must be logged on as a local or domain user with administrator permissions. Your user name cannot include a pound sign (#) or accented characters (such as, ä, ç, ñ).

Note: The patch installation must be performed by the same user who performed the full ALM installation.

- You must have the following file system and registry key permissions:
 - Full read permissions to all the files and directories under the directory in which ALM is installed. The default location for installation files is **C:\Program Files\Micro Focus\ALM**. The patch automatically identifies the correct installation directory path on your server machine. Do not change this path.
 - Full read, write, and execute permissions to the directory on which ALM is deployed. The patch automatically identifies the deployment directory that was specified during the initial installation of ALM.
 - Full read and write permissions to the repository directory which contains the **sa** and **qc** directories. The repository path is specified by the user during the first installation of ALM. The patch automatically identifies the correct repository path on your server machine. For details on the repository, refer to the *Micro Focus Application Lifecycle Management Administrator Guide*.
 - Full read permissions to the system root (%systemroot%) directory.
 - Full read and write permissions to the installation and configuration log files directory. Installation and configuration log files are written to **C:\ProgramData\Micro Focus\ALM\log**.
 - Full read and write permissions to all the keys under **HKEY_LOCAL_MACHINE\SOFTWARE**.

Tip: The **ProgramData** folder is hidden by default. Files and folders must be visible to view permissions. Show the hidden files by performing the relevant steps for your operating system.

Clustering Configuration

When deploying ALM over a cluster, you must install the patch on each of the cluster nodes.

Install the same version of the patch on all nodes, and insert the same repository and database details that you used on the first node.

You must use the same confidential data passphrase on all nodes.

It is important that you enter the repository path using the exact same characters on all nodes. For example, you cannot have the path on the first server node defined as **C:\alm\repository** and on additional nodes defined as **\\server1\alm\repository**. Rather the **\\server1\alm\repository** path must appear on every node.

Installing the Patch

Before installing the patch:

1. To prevent loss of files that were added or changed as a result of hot fixes or customization:
 - All files, except for files with a **.class** extension, that were added or changed under the **<ALM Deployment folder>\webapps\qcbn** folder should be copied to the **<ALM Deployment folder>\application\qcbn.war** folder, including the folder tree hierarchy.


Note: Do not copy over **.class** files from the **qcbn** folder as these files use a different codebase from the patch.

- Any file added or changed under the **<ALM File repository folder>\sa** folder should be copied to the **<ALM File repository folder>\customerData** folder, including the folder tree hierarchy.

After installing the patch and updating the deployment with the changes, the deployment process copies your files back to the **qcbn** and the **sa** folders.

Note: If user avatars are lost after a server upgrade, see this [KB article](#).

2. Make sure that all users are logged out of ALM. You can check active connections from Site Administration, in the **Site Connections** tab.

3. Check the *Readme* or *Release Notes* for the patch to see if it contains changes to project database schemas. If so:
 - a. **Back up all ALM projects.**
 - b. Set project update priorities (optional). For details, refer to the *Micro Focus Application Lifecycle Management Administrator Guide*.
4. Stop the ALM server. In the system tray, right-click the ALM icon  and choose **Stop Application Lifecycle Management**. Close the tray icon utility by right-clicking the ALM icon and selecting **Exit**.

Note: There may be multiple system tray icon processes running on the ALM server machine. After stopping the server, ensure that all system tray icon processes are terminated before installation. System tray processes can also be terminated in Windows Task Manager.

Caution: If the patch includes an automatic upgrade, be aware that the upgraded site administration schema refers to the projects in production.

To install the patch:

On your ALM server machine, run the ALM_Installer EXE file. Alternatively you can install the patch from the command line. The installation structure is mandatory for proper execution of the ALM EXE installer. The directory structure must be kept as is. Follow the installation and deployment instructions.

Patch installation automatically identifies the installation, deployment, and repository paths from the properties file that was created during the first installation of ALM. The file is saved in the following path **C:\ProgramData\Micro Focus\ALM\conf\qcConfigFile.properties**

If the installation fails, you receive an error message with the cause of the failure and the path to the log file.

Note: If the patch changes the database schema, the ALM Server Deployment Wizard prompts you to confirm that you have backed up all projects before proceeding with the deployment. You are not able to select **Next** until you confirm that you have backed up your projects.

After the patch is installed, the next time users log in to ALM, new files are downloaded and installed on the client machines. If file downloads are prohibited through your browser, you can install these files through the [ALM Client MSI Generator add-in](#), available on Marketplace.

Note: If you have enabled SSO in ALM 15.0, to make sure the SSO solution still works after installing the ALM 15.01 patch, you should re-deploy the SSO components after the patch installation. For details, see [Setting up SSO Authentication \(for ALM 15.0.1\)](#).

Uninstalling the Patch

There is no need to uninstall any patch before installing a new patch. For instructions on uninstalling a patch, refer to ["Uninstalling ALM" on page 133](#).

Part 3: Installation Prerequisites

Chapter 5: Pre-Installation Checklist

Review and verify the following checklist before installing ALM. This checklist outlines the information that you must supply during the installation process. For detailed prerequisite information, see the chapters in this part that are relevant to your installation.

Check	Information Required
Installation Machine	<ul style="list-style-type: none"> • Operating system version • CPU type • Free disk space • Free memory <div style="border: 1px solid #ccc; background-color: #e6f2e6; padding: 10px; margin-top: 10px;"> <p>Note: For the most up-to-date supported environments, see http://admhelp.microfocus.com/alm/specs/alm-qc-system-requirements.htm.</p> </div>
Setup Paths	<ul style="list-style-type: none"> • Installation path • Deployment path <div style="border: 1px solid #ccc; background-color: #e6f2e6; padding: 10px; margin-top: 10px;"> <p>Note:</p> <ul style="list-style-type: none"> • You can accept the default paths offered by the Installation and Configuration wizards, or enter alternative paths. • The installation path must not include folders with accented characters (for example, ä, ç, ñ). • The installation path and the deployment path cannot contain non-English characters. • You must have full permissions on the installation and deployment directories. </div>
License Key	License file
Cluster Description	<ul style="list-style-type: none"> • Is clustering used? • Cluster hosts

Check	Information Required
Encryption Passphrases	<ul style="list-style-type: none"> • Communication security passphrase • Confidential data passphrase <div style="border-left: 2px solid green; padding-left: 10px; margin-top: 10px;"> <p>Note: In a cluster, use the same passphrase on all nodes.</p> </div>
Application Server	The port number
Mail Server	<ul style="list-style-type: none"> • Server type • Server host • Server port
Demo Project	Do you require the Web-based demo application for work with the <i>Micro Focus Application Lifecycle Management Tutorial</i> ?
Database Server	<ul style="list-style-type: none"> • Database type • Database version • Database server name • Database administrator user name • Database administrator user password • Database port • Oracle service name (Oracle only) • Default tablespace (Oracle only) • Temp tablespace (Oracle only)
Site Administration	<ul style="list-style-type: none"> • Site administrator user name • Site administrator password

Check	Information Required
Existing ALM/Quality Center Installation	<p>If there is an existing Site Administration schema, provide the following information for the existing version:</p> <ul style="list-style-type: none">• ALM/Quality Center version• ALM/Quality Center host• Confidential data passphrase• Database server name• Database administrator user name• Database administrator password• Site Administration database schema name• Site Administration database schema password• Repository folder location• Site administrator user name• Site administrator password
Repository	Repository folder location
Java (JDK /JRE)	<p>Install Java on the ALM server. For details, see "Java Installation" on page 54.</p> <div data-bbox="553 1108 1377 1276"><p>Note: When working in a cluster environment, it is highly recommended to install the same version of JDK/JRE on each node.</p></div>

Chapter 6: Prerequisites: Windows Operating Systems

This chapter provides an overview of the prerequisites for installing ALM on Windows-based operating systems.

This chapter includes:

- [System Configurations: Windows](#) 37
- [Required Permissions: Windows](#) 37
- [Clustering: Windows](#) 38
- [ALM Repository Path: Windows](#) 39

System Configurations: Windows

Verify that your server machine meets the ALM system configurations.

Note: For the most up-to-date supported environments, see <http://admhelp.microfocus.com/alm/specs/alm-qc-system-requirements.htm>.

ALM can be deployed on a VMware ESX/ESXi server according to the VMWare guest operating system compatibility matrix.

Required Permissions: Windows

Verify that you have the required permissions to install ALM on a server machine.

Tip: Some permissions require access to the **ProgramData** folder. This folder is hidden by default. To show hidden files and folders, perform the relevant steps for your operating system.

- If you are upgrading from a previous version of ALM/Quality Center with a remote repository, the ALM/Quality Center application server user account must have network access to the remote repository. For details, contact your network administrator.
- You must be logged on as a local or domain user with administrator permissions. Your user name cannot include a pound sign (#) or accented characters (such as, ä, ç, ñ).

Note: All related installation operations for the same version, such as patch installations or uninstalling ALM, must be performed by the same user.

- You must disable User Account Control (UAC) during the ALM installation and configuration.

Note: In Windows 8, UAC cannot be completely disabled. Instead, use the **Run as Administrator** option during installation and configuration.

- The Distributed Link Tracking Client service must be stopped during the ALM installation and configuration.
- We recommend disabling anti-virus software during the ALM installation and configuration.
- You must have the following file system and registry key permissions:
 - Full read permissions to all the files and directories under the directory in which ALM is installed. The installation directory path is specified by the user during installation. By default, ALM writes the installation files to: **C:\Program Files\Micro Focus\ALM**.
 - Full read, write, and execute permissions to the directory on which ALM is deployed. The deployment directory is specified by the user during installation.

Note: Due to a Windows limitation, the deployment directory cannot be on a mapped drive.

- Full read and write permissions to the repository directory, which contains the **sa** and **qc** directories. The repository path is specified by the user during installation. By default, it is located under the ALM deployment directory. For details on the repository, refer to the *Micro Focus Application Lifecycle Management Administrator Guide*.

Note: Due to a Windows limitation, the repository path cannot be on a mapped drive.

- Full read permissions to the system root (**%systemroot%**) directory. If you do not have these permissions, you can still install ALM, but you cannot install any patches.
- Full read and write permissions to the installation and configuration log files directory. Installation and configuration log files are written to **C:\ProgramData\Micro Focus\ALM\log**.
- Full read and write permissions to all the keys under **HKEY_LOCAL_MACHINE\SOFTWARE\Mercury Interactive**.

Clustering: Windows

Check with your system administrator whether you are installing ALM on a single node or as a cluster.

If you are installing ALM on cluster nodes, verify which machine to use as the first node to start the installation and the number of machines you should use. This depends on the number of users and availability considerations.

When installing on additional nodes:

- **ALM version.** You must install the same version of ALM on all nodes.
- **Operating System.** You must install the same version of the operating system, including all patches, updates, or hot fixes, on all nodes.
- **Site Administration schema.** All nodes must point to the Site Administration schema.
- **Database details.** Configure all nodes with the same database information.
- **Confidential Data Passphrase.** You must use the same Confidential Data Passphrase on all nodes.
- **Repository path.** All nodes must point to the repository path that is defined on the first node. It is important that you enter the repository path using the exact same characters on all nodes. For example, you cannot have the path on the first server node defined as `c:\alm\repository` and on additional nodes defined as `\\server1\c$\alm\repository`—the `\\server1\c$\alm\repository` path must appear on every node.
- **Java Installation.** It is highly recommended to install the same version of JDK/JRE on each node.

ALM Repository Path: Windows

The location of the repository directory is specified by the user during installation. You must have full control permissions to the ALM repository path as described in ["Required Permissions: Windows" on page 37](#).

Note: Due to a Windows limitation, the repository path cannot be on a mapped drive.

Chapter 7: Prerequisites: Oracle Database Servers


This chapter provides an overview of the prerequisites for connecting ALM to an Oracle database server.

This chapter includes:

- [Connecting ALM to an Oracle Database Server](#) 41
- [Site Administration Database Schema Considerations: Oracle](#) 46
- [Oracle RAC Support](#) 46

Connecting ALM to an Oracle Database Server

Verify the following:

Database type and version	Verify that ALM supports your database type and version.  Note: For the most up-to-date supported environments, see http://admhelp.microfocus.com/alm/specs/alm-qc-system-requirements.htm .
Database server name	Verify the name of the database server.
Database user permissions	Verify that you have the database permissions required to install ALM on the Oracle database server. For a list of required permissions, see " User Permissions for Connecting ALM to an Oracle Database Server " on the next page.

<p>Site Administration database schema</p>	<p>To install ALM on an existing Site Administration database schema (second node or upgrade), you must have:</p> <ul style="list-style-type: none"> • The existing database schema name and the database administrator permissions required to connect ALM to the database server. • Full read/write permissions on the existing repository. • ALM must have access to the previous Site Administration schema repository path. • Full read/write permissions for the ALM user to the previous schema repository path. • The Confidential Data Passphrase that was used to create the existing schema. <p>For schema name and password considerations, see "Site Administration Database Schema Considerations: Oracle" on page 46.</p>
<p>Database tablespace name and size</p>	<ul style="list-style-type: none"> • Verify the name of the database server, and check the connection to the database server. Ping the database server machine name to test DNS resolution. • Verify you have the tablespace names (default and temporary) and the minimum tablespace sizes for storing the Site Administration database schema. • Verify that the tablespace is not locked.
<p>Database Column Length Semantics</p>	<p>For Unicode databases, ensure that column length (NLS_LENGTH_SEMANTICS) is defined according to characters (CHAR), and not according to bytes (BYTE, the default option).</p>

This section also includes:

- [User Permissions for Connecting ALM to an Oracle Database Server](#) 42

User Permissions for Connecting ALM to an Oracle Database Server

To connect ALM to an Oracle database server, the installing database user must have sufficient permissions to perform certain administrative tasks in Oracle. These tasks include creating the ALM project user schema, copying data between projects, and checking that there is sufficient storage in a specific tablespace.

We recommend that your database administrator create an ALM database administrative user, for example **qc_admin_db**, with the specific privileges required to install ALM.

Your database administrator can create an ALM database administrative user using a script, see this [KB article](#). This script creates the ALM database administrative user with the recommended grants required on the database. Your database administrator should run the script and create this user on the staging database server.

Note: The privileges of the Oracle database user "system" changed after version 12c. If you are working with Oracle Database versions later than 12c, make sure you create an ALM database administrative user by following this [KB article](#) and grant the necessary privileges. For details on the required privileges, see "[Database Administrative User Privileges](#)" below.

This section includes:

- [Database Administrative User Privileges](#) 43
- [Project User Privileges](#) 45

Database Administrative User Privileges

Following are the privileges required by the ALM database administrative user. Additional explanations about these privileges can be found in the notes at the end of the table.

Privilege	Description
CREATE SESSION WITH ADMIN OPTION (1)	ALM uses this privilege to connect to the database as the ALM database administrative user.
CREATE USER	Required to create a new project user schema when creating a new ALM project.
DROP USER	When deleting an ALM project, ALM attempts to remove the Site Administration database schema from the database server. If there is an insufficient privileges error, ALM ignores the error and requests that the user notify the database administrator to delete (drop) the database user schema.
CREATE TABLE WITH ADMIN OPTION (1)	Required for granting this permission to a newly created ALM project user schema.

Privilege	Description
CREATE VIEW WITH ADMIN OPTION (1)	Required to create views for ALM projects.
CREATE TRIGGER WITH ADMIN OPTION (1)	Required to create triggers for ALM projects. ALM uses database triggers to collect change history for specific tables.
CREATE SEQUENCE WITH ADMIN OPTION (1)	Required to create sequences for ALM projects.
CREATE PROCEDURE WITH ADMIN OPTION (1)	Required to create stored packages for ALM projects. ALM uses packages to collect change history for specific tables.
CTXAPP ROLE WITH ADMIN OPTION (1)	Enables ALM to use the Oracle text searching feature. This role exists only if the Oracle text search component was installed and enabled on the database server.
SELECT ON DBA_FREE_SPACE (2)	Required to check free space on the database server prior to creating a new Site Administration database schema or a new project.
SELECT ON SYS.DBA_TABLESPACES (2)	Required to collect a list of tablespaces that exist on the database server prior to creating a new Site Administration database schema or a new project.
SELECT ON SYS.DBA_USERS (2)	Required to verify the existence of specific database project users. For example, you might want to verify the existence of an Oracle CTXSYS user before creating a new ALM project.
SELECT ON SYS.DBA_REGISTRY (2)	Required to verify that the text search component is installed on the database server.
SELECT ON SYS.DBA_ROLES (2)	Required to verify that the text search role (CTXAPP) is installed on the database server.

Privilege	Description
SELECT ANY TABLE WITH ADMIN OPTION (1) and INSERT ANY TABLE	Required for various administrative operations when upgrading the Site Administration database schema during installation using the copy and upgrade method, and for enhancing performance when copying a project that has the same source and target database server.

Note:

- (1) An ALM database administrative user must have privileges with Admin Option.
- (2) The SELECT ON SYS privileges can be given directly by the table owner, or through a database application role. To avoid giving these privileges each time, you can grant this role to the ALM database administrative user. The recommended name for this role is **QC_SELECT_ON_SYS_OBJECTS**. You should run this script before you run the **qc_admin_db___oracle.sql** script.

Project User Privileges

When creating a new project, ALM creates a project user schema. This user schema hosts all the tables that are used by the project for storing and retrieving data. Following are the required privileges for an ALM project user schema:

Project User Schema Privilege	Description
QUOTA UNLIMITED ON <default tablespace>	Required for creating database objects that are owned by the ALM project user schema. This privilege allows users to create tables in the default tablespace. It replaces the UNLIMITED TABLESPACE system privilege that gave users system privileges to create tables in any tablespace, including the SYSTEM tablespace.
CREATE SESSION	ALM uses this privilege to connect to the database user schema to perform required operations. For example creating database objects such as tables, and using them to insert, retrieve, and delete data.

Project User Schema Privilege	Description
<ul style="list-style-type: none">• CREATE TABLE• CREATE VIEW• CREATE TRIGGER• CREATE SEQUENCE• CREATE PROCEDURE• CTXAPP Role	For a description of these privileges, see "Database Administrative User Privileges" on page 43 .

Site Administration Database Schema Considerations: Oracle

Be aware of the following schema name and password considerations:

- The default Site Administration database schema name is **qcsiteadmin_db**. If you want to rename the schema, you can change the name when configuring the ALM installation.

Note: The Site Administration database schema name can only contain English characters or numbers.

- You can create your own ALM user password for accessing the Site Administration database schema.
- If there is an existing Site Administration database schema, you can create a copy of the existing schema and upgrade the copy. This enables you to work with ALM 15.0 and previous versions of ALM/Quality Center simultaneously.

Oracle RAC Support

Oracle RAC is a way to enhance Oracle database availability and scalability, allowing it to interact with more than one database instance.

ALM RAC support includes:

- Load balancing between Oracle instances.
- Failover between all specified Oracle RAC nodes at initial connection.

ALM RAC support does not include:

- TAF (Transparent Application Failover) support. A user failing to complete a request upon an Oracle instance crash is required to perform the activity again with a working Oracle instance.

To enable Oracle RAC support:

1. Verify that a file containing information of Oracle database addresses is saved on your ALM machine. The file is named **tnsnames.ora**. The file should contain information similar to the following examples:
 - a. This first example shows an RAC TNS Alias using all cluster nodes in the ADDRESS sub-section and a sample of utilizing the Load balance and Failover features:

```
Example:  
OrgRAC =  
(DESCRIPTION =  
  (ADDRESS_LIST=  
    (FAILOVER = on)  
    (LOAD_BALANCE = on)  
    (ADDRESS= (PROTOCOL = TCP)(HOST = server1)(PORT = 1521))  
    (ADDRESS= (PROTOCOL = TCP)(HOST = server2)(PORT = 1521))  
    (ADDRESS= (PROTOCOL = TCP)(HOST = server3)(PORT = 1521))  
  )  
  (CONNECT_DATA=  
    (SERVICE_NAME = myrac.yourcompany.com)  
  )  
)
```

- b. This second example shows an RAC TNS Alias using Single Client Access Name (SCAN). This enables Oracle 11gR2 clients to connect to the database with the ability to resolve multiple IP addresses, reflect multiple listeners in the cluster and handle public client connections. For details on working with RAC SCAN, refer to the Oracle documentation.

```
Example:  
OrgRAC_Scan =  
(DESCRIPTION =  
  (ADDRESS_LIST=  
    (FAILOVER = on)  
    (LOAD_BALANCE = on)  
    (ADDRESS= (PROTOCOL = TCP)(HOST = myrac-cluster-scan)(PORT = 1521))  
  )  
  (CONNECT_DATA=  
    (SERVICE_NAME = myrac.yourcompany.com)  
  )  
)
```

2. Verify that you have the address of the TNS server to which ALM should refer, for example, OrgRAC.

Chapter 8: Prerequisites: Microsoft SQL Database Servers


This chapter provides an overview of the prerequisites for connecting ALM to a Microsoft SQL database server.

This chapter includes:

- [Connecting ALM to a Microsoft SQL Database Server](#) 49
- [User Permissions for Connecting ALM to a Microsoft SQL Database Server](#) 50
- [Site Administration Database Schema Considerations: SQL](#) 52

Connecting ALM to a Microsoft SQL Database Server

Verify the following:

Database type and version	Verify that ALM supports your database type and version.  Note: For the most up-to-date supported environments, see http://admhelp.microfocus.com/alm/specs/alm-qc-system-requirements.htm .
Database server name	Verify the name of the database server.
Database user permissions	Verify that you have the database permissions required to connect ALM to the Microsoft SQL database server (not applicable for Windows Authentication). For a list of required permissions, see " User Permissions for Connecting ALM to a Microsoft SQL Database Server " on the next page.

Site Administration database schema	To install ALM on an existing Site Administration database schema (second node or upgrade), you must have: <ul style="list-style-type: none">• The existing database schema name and the database administrator permissions required to connect ALM to the database server.• Full read/write permissions on the existing repository.• ALM must have access to the previous Site Administration schema repository path.• Full read/write permissions for the ALM user to the previous schema repository path.• The Confidential Data Passphrase that was used to create the existing schema. For schema name and password considerations, see "Site Administration Database Schema Considerations: SQL" on page 52.
Text Search	Verify that the text search component is installed on the server, even if you do not intend to use it.

User Permissions for Connecting ALM to a Microsoft SQL Database Server

To connect ALM to a Microsoft SQL database server, the installing database user must have sufficient permissions to perform certain administrative tasks in SQL.

If you have the SQL **sa** login, you can use it to install ALM. If you are unable to use the SQL **sa** login due to security reasons, we recommend that your database administrator create an ALM database administrative login, for example **td_db_admin**, with the specific privileges required to install ALM.

The **td_db_admin** login must have the Database Creators role. You must also grant the **td_db_admin** login the Security Administrators role. This allows the **td_db_admin** login to create and add the **td** user with only those privileges required for running ALM, and to run the Maintain Project activities, such as Verify, Repair, and Update.

Note: If you are unable to grant the Database Creators and Security Administrators roles, you can grant specific privileges for the database administrative login. For details, see this [KB article](#).

To create an ALM database administrative login on a Microsoft SQL Server:

1. Open the **SQL Server Management Studio**.
2. In the **Object Explorer** pane, under the ALM database server, expand the **Security** folder.
3. Right-click the **Logins** folder, and select **New Login**.
4. Type **td_db_admin** as the login name, and select the authentication type (enter password if necessary).
5. Click the **Server Roles** tab, and select the **dbcreator** and **securityadmin** options.
6. Click **OK**.

To test the ALM database administrative login after connecting via this login (SQL Server Authentication):

1. Verify the **select sysdatabases table** permission in the master database:

```
SELECT name FROM sysdatabases where name=<db_name>
```

2. Verify the **create database** permission:

```
CREATE DATABASE <dbName> -- the database name must not already exist
```

3. Verify the **drop database** permission:

```
DROP DATABASE <database_name> -- the database name must exist
```

4. Verify the **select syslogins** permission:

```
SELECT COUNT(*) FROM master..syslogins WHERE name=<dbOwnerName>
```



Note: The **dbOwnerName** must be set to **td**.

To test the ALM database administrative login permissions after connecting via this login (Windows Authentication):

1. Verify the **change database context** permission:

```
USE <dbName>
```

2. Verify the **create database** permission:

```
CREATE DATABASE <dbName> -- the database name must not already exist
```

3. Verify the select on **syslogins** permission:

```
SELECT COUNT(*) FROM master..syslogins WHERE name='<dbOwnerName>'
```

4. Verify the select on **sysusers** permission:

```
SELECT COUNT(*) FROM master..sysusers WHERE name='<dbOwnerName>'
```

Site Administration Database Schema Considerations: SQL

Be aware of the following schema name and password considerations:

- The default Site Administration database schema name is **qcsiteadmin_db**. If you want to rename the schema, you can change the name when configuring the ALM installation.

Note: The Site Administration database schema name can only contain English characters or numbers.

- You can create your own ALM user password for accessing the Site Administration database schema.
- If there is an existing Site Administration database schema, you can create a copy of the existing schema and upgrade the copy. This enables you to work with ALM 15.0 and previous versions of ALM/Quality Center simultaneously.

Chapter 9: Prerequisites: General

This chapter provides an overview of various prerequisites for installing ALM.

This chapter includes:

- [License Activation](#) 53
- [Security Passphrases](#) 53
- [Mail Server Information](#) 53
- [Java Installation](#) 54
- [Conflicting Applications](#) 54

License Activation

To activate your license go to the Software Licenses and Downloads Portal using one of the following links:

- <https://entitlement.microfocus.com>
- <https://entitlement.mfgs.microfocus.com> for US Government Solutions

For further support, go to one of the following links:

- <https://entitlement.microfocus.com/mysoftware/contact/softwareContact>
- <https://entitlement.mfgs.microfocus.com/mysoftware/contact/softwareContact> for US Government Solutions

Security Passphrases

Verify that you have passphrases for confidential data and communication security encryption.

For secondary cluster nodes, verify that you have the confidential data encryption passphrase that you used to install the primary cluster.

You must use the same confidential data passphrase as was used for the previous installation.

Mail Server Information

A mail server enables ALM users to send emails to other users in a project. You select which server to use as part of the installation configuration process.

Before installing ALM, decide which mail server to use. Ask your system administrator for assistance. If you are using an SMTP Server, check that you have the SMTP Server name and port. The installer checks that the specified mail server name and port are valid and that the mail server is running.

Java Installation

ALM requires Java Development Kit (JDK) or Java Runtime Environment (JRE) to be installed prior to installing ALM (only x64 is supported).

Note: When working in a cluster environment, it is highly recommended to install the same version of JDK/JRE on each node.

Oracle Java JDK or JRE

Download and install JDK or JRE from the following URL:

<http://www.oracle.com/technetwork/java/javase/downloads/jre8-downloads-2133155.html>.

OpenJDK 8

1. Download from the following URL: <https://adoptopenjdk.net/releases.html>.
2. Unzip the OpenJDK file to a folder.
3. Open the System Properties dialog box. In the Advanced tab, click **Environment Variables**.
4. Under **System Variables**, edit the **Path** and add the OpenJDK bin path (for example:
C:\OpenJDK8_x64_Win_jdk8u172-b11\jdk8u172-b11\bin).
5. To verify that Java was installed correctly, run `java -version` in the command prompt.

Conflicting Applications

To work with ALM, you may need to disable conflicting applications that are running on the ALM machine. For a list of these applications, see this [KB article](#).

Chapter 10: Prerequisites: Client-side

This chapter provides an overview of the prerequisites for working with ALM on a client machine. The steps described in this chapter are performed on the client machines, and not on the machine on which ALM server is installed.

This chapter includes:

- [System Configurations](#) 55
- [Permissions Required to Download ALM Client Components](#) 55
- [Internet Explorer Configuration](#) 56
- [Enabling User Account Control \(UAC\)](#) 57

System Configurations

Verify that client machines meet the ALM system configurations see <http://admhelp.microfocus.com/alm/specs/alm-qc-system-requirements.htm>.

Additional Considerations

The following considerations must also be taken into account:

- If you are integrating ALM with other Micro Focus testing tools, you must modify the DCOM permissions on your client machine. For details, see this [KB article](#).
ALM Edition: Modifying DCOM permissions is not required for running Functional test sets (server-side test execution).
- You can work with the ALM client using a remote desktop.
- For customers using remote or mass distribution mechanisms, ALM client components can be deployed locally on client machines by running a self-extracting **msi** file. You build the **msi** file by running the [ALM Client MSI Generator](#), available from Marketplace.

Permissions Required to Download ALM Client Components

To enable ALM to work with Micro Focus testing tools as well as various other integrations and third-party tools, you need to log in to the client machine with administrator privileges. These privileges are required to install the ALM Client Registration add-in, which you use to register ALM client components and Site Administration client components on your client machine.

File System Permissions

You must have the following file system permissions:

- Full read and write permissions on the HP\ALM-Client deployment folder. This is located at %ALLUSERSPROFILE%.
- Full read and write permissions to the Temp (%TEMP% or %TMP%) directory. The installer program writes installation and log files to this directory. This is generally located at C:\Users\\AppData\Local\Temp.

Internet Explorer Configuration

Before you download Application Lifecycle Management on a client machine, you must perform the following configurations to the Internet Explorer browser on the client machine.

- Configure the Custom Level security settings. The Custom Level security setting should be configured for the specific zone of the ALM server.
- Set Internet Explorer as the default Web browser. This ensures that external links to ALM entities can open in ALM.

To configure security settings on the client machine:

1. In Internet Explorer, select **Tools > Internet Options**. The Internet Options dialog box opens.
2. Click the **Security** tab. The Web content zone of the ALM server (Internet or Local intranet) is automatically selected. Click **Custom Level**.
3. In the Security Settings dialog box, configure the following settings:

Under .NET Framework-reliant components:

- Set **Run components not signed with Authenticode** to **Enable**.
- Set **Run components signed with Authenticode** to **Enable**.

Under ActiveX controls and plug-ins:

- Set **Run ActiveX controls and plug-ins** to **Enable**.
- Set **Download signed ActiveX controls** to **Enable** or **Prompt**.

Note: You do not need to enable **Download signed ActiveX controls** if you install the ALM client using the ALM Client MSI Generator Add-in. This allows you to install all ALM modules on a client machine without downloading them through a browser.

4. On Windows 7:
 - It is suggested that you add the ALM server site to the Trusted Sites security zone. This is not mandatory.
 - Disable **the Protected Mode** for the Trusted Sites security zone.
5. Click OK.

To set Internet Explorer as the default web browser:

1. In Internet Explorer, select **Tools > Internet Options**. The Internet Options dialog box opens.
2. Click the **Programs** tab.
3. Under **Default web browser**, make sure that Internet Explorer is set as the default browser. If not, click the **Make default** button.

Enabling User Account Control (UAC)

If you enable UAC on a Microsoft Windows 7, 2008R2, or 2012 operating system, be aware of the following considerations:

- To register ALM client components, you must run Internet Explorer as the administrator.
- To register ALM client components on a shared location of a client machine, you must run Internet Explorer as the administrator.
- To install and run ALM Client MSI Generator, and to run ALM client MSI files, you must log in with administrator permissions.
- Administrator permissions are required to run the ALM Tray Icon.

Part 4: Pre-Installation Project Upgrade Steps

Chapter 11: Project Upgrade Considerations

If you are upgrading from an earlier version of ALM/Quality Center, this chapter presents project upgrade considerations to be taken into account before installing ALM 15.0 .

Note: For upgrade troubleshooting details, see ["Upgrade Preparation Troubleshooting" on page 159](#).

This section includes:

- [Upgrade Versions](#)61
- [Suggested ALM System Configuration](#) 61

Upgrade Versions

The following table describes how to upgrade projects from previous Quality Center and ALM versions.

From version:	To ALM 15.0 :
ALM 12.00 - 12.5x	Upgrade projects directly to ALM 15.0 .
ALM 11.52	Upgrade to ALM 12.53 or 12.55, then upgrade to ALM 15.0 .
ALM 11.00	Projects must first be migrated to ALM 12.21. For details, see the <i>ALM 12.21 Installation and Upgrade Guide</i> .

Caution: Before performing any upgrade, the current repository must be moved to the correct location for the new version.

Suggested ALM System Configuration

The ALM system includes the following main components: The ALM server, the database server, and the project repository. For details regarding the function of each component within the ALM system, see ["About ALM Technology and Architecture" on page 11](#).

When planning your installation and upgrade strategy, decide whether to install the new ALM system on new system components, or to reuse components from the existing system.

It is strongly recommended that you not use any of the existing components as part of the new system.

- **ALM server.** To install the new version of the ALM server on the same machine where the existing ALM server is installed, first reformat or reinstall the machine's operating system. You can also uninstall the old version of ALM. For more details on uninstalling ALM, see ["Uninstalling ALM" on page 133](#).
- **Database server.** Install an updated version of the database server on a separate machine, or create a new instance of the existing server on the machine on which it is currently installed.
- **Project Repository.** Create a copy of the existing repository to be used by the new system.

Advantages

Following this best practice produces two functioning ALM systems:

- The original system that can open and work with existing projects.
- The new system to which existing projects will be upgraded.

Each system is totally separate, and any problem encountered in one does not impact the other.

This best practice has the distinct advantage of enabling you to incrementally upgrade your projects. Since there are two functioning ALM systems, there is no need to deactivate all projects at once. You can deactivate projects individually in the old system, back them up, and then reactivate them in the new system, upgrading them one-by-one. Without two functioning ALM systems, all projects would remain inactive until their upgrades are complete, a significant amount of project downtime.

Note: Before beginning the upgrade process you must back up the database server and the project repository. Continuing to work in the old ALM system after backing up causes the backup to be out of date.

The following are two examples of critical problems that may arise when you do not follow the suggested upgrade approach:

- **Unnecessary project downtime.** If a project becomes corrupted before you complete its upgrade, there will be no option but to retrieve a backup copy of it. Depending on organizational policy this process may take a few days, meaning that the project is not available at all for this amount of time.

If the original ALM system is functioning however, you can go back to a working version of the project immediately and not be dependent on waiting for the backup to arrive, thus avoiding unnecessary project downtime.
- **Damaged project repository.** If you install the new version of the ALM server on the same machine, you must first uninstall the existing ALM server. It is possible that you may subsequently discover a problem with the project repository that requires the original ALM server to repair it.

Your only course of action is to:

- a. Uninstall the new version.
- b. Reinstall the old version.
- c. Fix the project repository.
- d. Uninstall the old version.
- e. Reinstall the new version.

Chapter 12: Project Upgrade Pre-Installation Activities

This chapter describes project upgrade steps that must be performed before installing ALM 15.0

This section includes:

- [Back Up Projects in Existing ALM Installation](#) 65
- [Verifying Domains and Projects](#) 66
- [Repairing Domains and Projects](#) 71
- [Restoring Backed Up Projects and Repositories](#) 74
- [Verify Projects Again](#) 76
- [Copy Site Administration Database Schema to the New Database Server](#) 76

Back Up Projects in Existing ALM Installation

Back up all your projects in the existing ALM installation. Projects should be backed up before running the verify and repair tools.

When you run the repair or upgrade process, ALM performs changes on your projects to align them with the specifications for the current version of ALM. You must back up your projects before you start to repair or upgrade them.

We strongly recommend that you deactivate projects before backing them up. If you must back up while your project is still active, you must back up the database before the file system. We also recommend backing up the file system as soon as possible after backing up the database. To back up and restore data from active projects, see this [KB article](#).

Note:

- The repair process makes changes to the project database schema only. Before running the repair process, you should back up the project database schema on the database server, and you should back up the project data in the file system.
- Before you run the upgrade process, perform a full backup of your projects that includes the project database schema and the project repository.
- **Version Control:** Version control enabled projects cannot be backed up while there are checked out entities. All entities must be checked in to the corresponding version of Quality Center or ALM. To determine if there are checked out entities, see this [KB article](#).

To back up the project database schema on the database server:

- **Microsoft SQL database.** To back up the project database schema on the database server, see this [KB article](#).
- **Oracle database.** To back up the project database schema on the database server, see this [KB article](#).

Verifying Domains and Projects

Verify all projects in the existing ALM installation.

The verify and repair process checks that the project schema structure and data integrity are correct for the existing version of ALM. It is important to verify this before proceeding with the new installation, since the projects on the old server should be aligned prior to upgrade.

You can run the verify tool per individual project, or on the domain level to verify all projects in the domain.

This section includes:

- [Verification Process Overview](#)66
- [Define an Exception File](#) 66
- [Verify a Project](#) 68
- [Verify a Domain](#) 69

Verification Process Overview

The verification process:

- Checks the correctness of the database user schema and data in a project.
- Detects problems in your environment, settings, schema structure, and data integrity that could cause the upgrade to fail.
- Generates a verification report which alerts you to problems that can be repaired by ALM and problems that you should manually repair.

By default, the verification report is saved on the ALM server machine. To change this default location, refer to the *Micro Focus Application Lifecycle Management Administrator Guide*.

Define an Exception File

If you have made changes to a project database user schema such as the addition of tables or columns, the verification, repair, or upgrade processes may fail. You can define an exception file for objects that are added manually to the database user schema, and are not defined in the schema configuration file. This instructs ALM to ignore these changes.

You can use the exception file to ignore warnings for extra tables, views, columns, and sequences. For any other problem that requires manual repair, consult with your database administrator.

You must use the same exception file when running the verification, repair, or upgrade processes.

You can set an exception file for a single project or for all projects in Site Administration.



Caution: Using the exception file to ignore warnings for objects that are added manually to the schema may compromise the stability of your project upgrade and the validity of the database user schema.

To define an exception file:

1. Copy the **SchemaExceptions.xml** file from the ALM installation directory. By default, the file is located in **<ALM installation path>\ALM\data\sa\DomsInfo\MaintenanceData**.
2. Create the exception file, for example, **my_exceptions.xml**, and define the exceptions as follows:

- For an extra table:

```
<TableMissing>  
    <object pattern="MY_Table" type="extra"/>  
</TableMissing>
```

- For an extra view:

```
<ViewMissing>  
    <object pattern="MY_VIEW" type="extra"/>  
</ViewMissing>
```

- For an extra column:

```
<ColumnMissing>  
    <object pattern="MY_COLUMN" type="extra"/>  
</ColumnMissing>
```

- For an extra sequence:


```
<SequenceMissing>  
    <object pattern="MY_SEQUENCE" type="extra"/>  
</SequenceMissing>
```

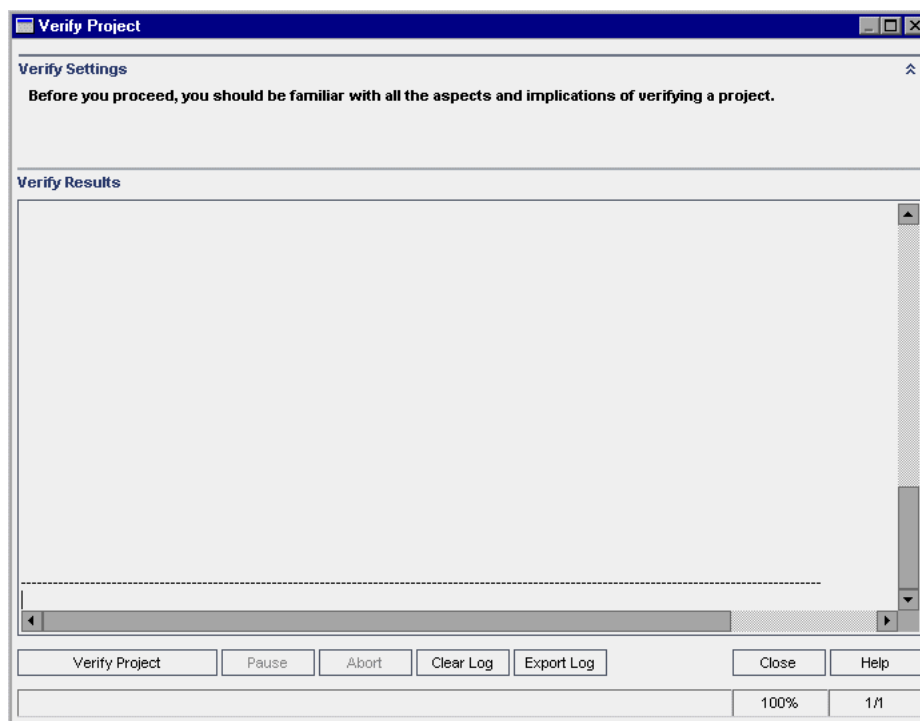
3. To set an exception file for a single project:

- a. In Site Administration, click the **Site Projects** tab.
 - b. In the Projects list, select a project. In the right pane, select the **Project Details** tab. The project's details are displayed.
 - c. Under **Project Database**, click **Exception File**. The Edit Exception File dialog box opens.
 - d. Type the file location. The file is located under **<<Repository path>\sa\DomsInfo\MaintenanceData**.
4. To set an exception file for all projects:
- a. In Site Administration, click the **Site Configuration** tab.
 - b. Add the **UPGRADE_EXCEPTION_FILE** parameter to the list of parameters and define the exception file location. A template example of an empty file is located under **<Repository path>\sa\DomsInfo\MaintenanceData**.
- For details, refer to the *Micro Focus Application Lifecycle Management Administrator Guide*.

Verify a Project

This section describes how to verify a single project.


1. In Site Administration, click the **Site Projects** tab.
2. In the Projects list, select a project.
3. Click the **Maintain Project**  button and choose **Verify Project**. The Verify Project dialog box opens.

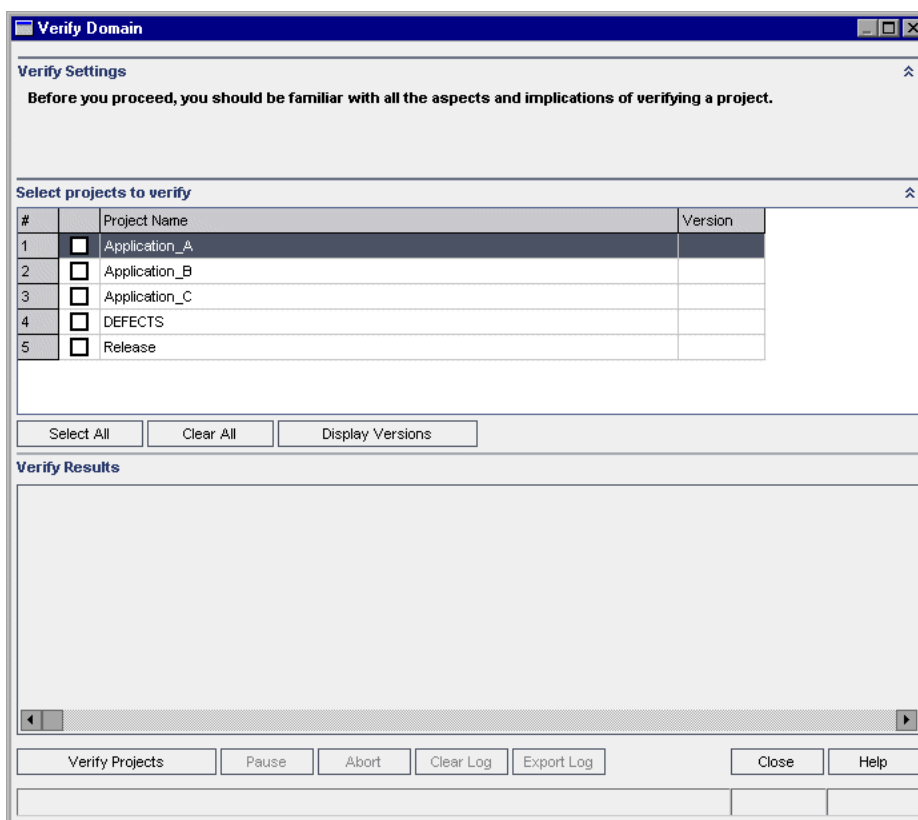


4. Click the **Verify Project** button to start the verification process. In the Verify Results pane, log messages are displayed.
If a database error occurs while running the process, a message box opens. Click the **Abort** or **Retry** buttons, based on whether you can correct the problem described in the message box.
5. To pause the verification process, click the **Pause** button. To continue, click the **Resume** button.
6. To abort the verification process, click the **Abort** button. Click **Yes** to confirm.
7. To save the messages displayed in the Verify Results pane to a text file, click the **Export Log** button. In the Export Log to File dialog box, choose a location and type a name for the file. Click **Save**.
8. To clear the messages displayed in the Verify Results pane, click the **Clear Log** button.
9. When the verification process completes, the Verify Results pane displays the location of the verification report. The file is located in the following directory: **<ALM Repository Path>\sa\DomsInfo\MaintenanceData\out\<Domain Name>\<Project Name>**.
10. Analyze the verification report. The report indicates both problems that can be repaired by ALM automatically, and the problems that you need to repair manually.
11. Click **Close** to close the Verify Project dialog box.

Verify a Domain

This section describes how to verify all projects in a domain.

1. In Site Administration, click the **Site Projects** tab.
2. In the Projects list, select a domain.
3. Click the **Maintain Domain** button  and choose **Verify Domain**. The Verify Domain dialog box opens.



4. To view the current version numbers of your projects, select the project names, or click **Select All** to view version numbers for all projects. Click the **Display Versions** button.
The project version number is displayed in the **Version** column.
5. To verify your projects, select the project names, or click **Select All** to verify all projects. Click the **Verify Projects** button.
If a database error occurs while running the process, a message box opens. Click the **Abort** or **Retry** buttons, based on whether you can correct the problem described in the message box.
6. To pause the verification process, click the **Pause** button. To continue, click the **Resume** button.
7. To abort the verification process, click the **Abort** button. Click **Yes** to confirm.
8. To save the messages displayed in the Verify Results pane to a text file, click the **Export Log** button. In the Export Log to File dialog box, choose the location and type the name for the file. Click **Save**.
9. To clear the messages displayed in the Verify Results pane, click the **Clear Log** button.
10. When the verification process completes, the Verify Results pane displays the location of each verification report. The files are located in the following directory: **<ALM Repository Path>\repository\sa\DomsInfo\MaintenanceData\out\<Domain Name>\<Project Name>**.

11. Analyze the verification report. The report indicates problems that can be repaired by ALM and the problems that you need to repair manually.
12. Click **Close** to close the Verify Domain dialog box.

Repairing Domains and Projects

The repair process fixes most data and schema issues found by the verification process. If the verification process finds problems that can cause data loss, the repair process does not fix these automatically. You need to repair these problems manually. To find out whether a particular issue is handled automatically or manually, refer to the verification report.

By default, the repair process runs in non-silent mode. When running the process in non-silent mode, ALM may pause and prompt you for input when an error occurs. Instead, you can choose to run the process in silent mode. When an error occurs, ALM aborts the process without prompting you for input.

For detailed information on the problems fixed by the repair process, and help with repairing problems that cannot be fixed by ALM, see ["Upgrade Preparation Troubleshooting" on page 159](#).


This section includes:

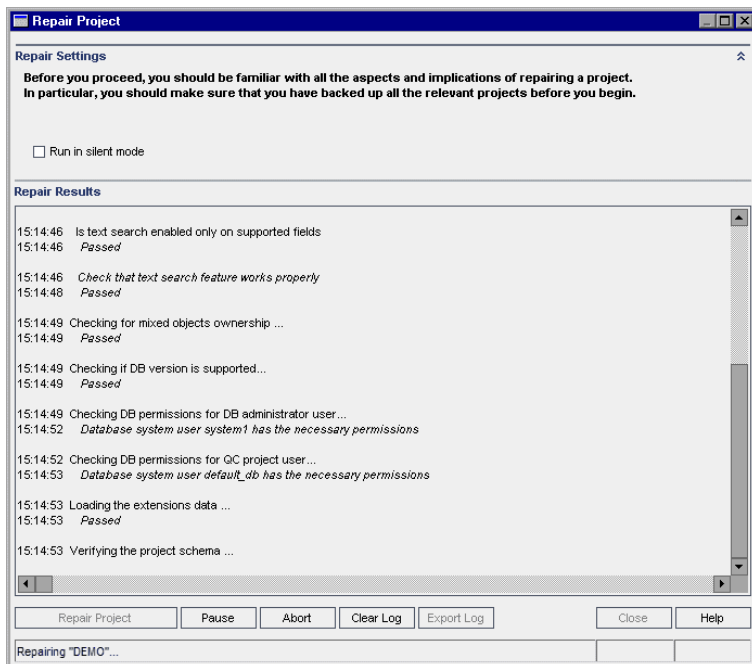
- [Repairing a Project](#) 71
- [Repairing a Domain](#) 73

Repairing a Project

This section describes how to repair a single project.

To repair a project:

1. In Site Administration, click the **Site Projects** tab.
2. In the Projects list, select a project.
3. Click the **Maintain Project**  button and choose **Repair Project**. The Repair Project dialog box opens.




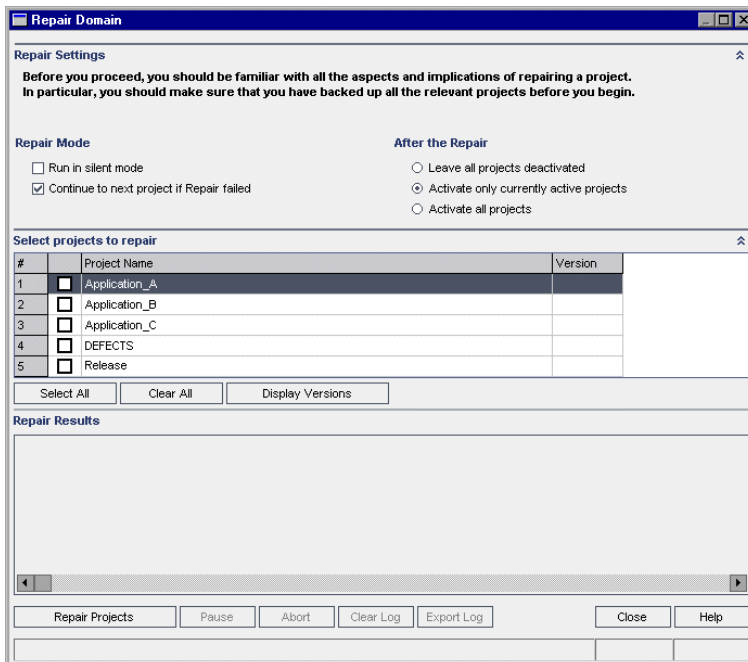
4. To run the repair process without any user interaction, select **Run in Silent Mode**.
5. To start the repair process, click the **Repair Project** button. If the project is active, you are prompted to deactivate it. For details about deactivating projects, refer to the *Micro Focus Application Lifecycle Management Administrator Guide*.
If a database error occurs while running the process in non-silent mode, a message box opens. Click the **Abort** or **Retry** buttons, based on whether you can correct the problem described in the message box.
If the repair process fails, see "[Restoring Backed Up Projects and Repositories](#)" on page 74.
6. To pause the repair process, click the **Pause** button. To continue, click the **Resume** button.
7. To abort the repair process, click the **Abort** button. Click **Yes** to confirm.
8. To save the messages displayed in the Repair Results pane to a text file, click the **Export Log** button. In the Export Log to File dialog box, choose a location and type a name for the file. Click **Save**.
9. To clear the messages displayed in the Repair Results pane, click the **Clear Log** button.
10. Click **Close** to close the Repair Project dialog box.

Repairing a Domain

This section describes how to repair all projects in a domain.

To repair a domain:

1. In Site Administration, click the **Site Projects** tab.
2. In the Projects list, select a domain.
3. Click the **Maintain Domain**  button and choose **Repair Domain**. The Repair Domain dialog box opens.



4. In the **Repair Settings** area, under **Repair Mode**, you can select the following options:
 - **Run in Silent Mode.** Runs the process without any user interaction.
 - **Continue to next project if repair failed.** Proceeds to the next project if the repair process fails. This is the default option.
5. In the **Repair Settings** area, under **After the Repair**, you can select one of the following options:
 - **Leave all projects deactivated.** Leaves all projects deactivated after the repair process completes.
 - **Activate only currently active projects.** Reactivates previously-activated projects after the repair process completes. This is the default option.
 - **Activate all projects.** Activates all projects after the repair process completes.
6. To view the current version numbers of your projects, select the project names, or click **Select All** to view version numbers for all projects. Click the **Display Versions** button.

The project version number is displayed in the **Version** column.

7. To repair your projects, select the project names, or click **Select All** to verify all projects. Click the **Repair Projects** button.
If a database error occurs while running the process in non-silent mode, a message box opens. Click the **Abort** or **Retry** buttons, based on whether you can correct the problem described in the message box.
If the repair process fails, see ["Restoring Backed Up Projects and Repositories" below](#).
8. To pause the repair process, click the **Pause** button. To continue, click the **Resume** button.
9. To abort the repair process, click the **Abort** button. Click **Yes** to confirm.
10. To save the messages displayed in the Repair Results pane in a text file, click the **Export Log** button. In the Export Log to File dialog box, choose a location and type a name for the file. Click **Save**.
11. To clear the messages displayed in the Repair Results pane, click the **Clear Log** button.
12. Click **Close** to close the Repair Domain dialog box.

Restoring Backed Up Projects and Repositories

If the repair or upgrade process fails, you must restore the backed up projects before trying the process again. You can restore projects that were backed up on an Oracle or Microsoft SQL database server, and you can restore project repositories that were backed up in the file system. A project you restore can be used only in the ALM/Quality Center version from which it was backed up. Before restoring the backed up project, you must remove the project from Site Administration.

If you were previously working with LoadRunner Enterprise 11.00 or later, see ["Restoring LAB_PROJECT" on page 76](#).

This section includes:

- [Restoring Projects from a Microsoft SQL Database Server](#) 74
- [Restoring Projects from an Oracle Database Server](#) 75
- [Restoring a Repository from the File System](#) 76
- [Restoring LAB_PROJECT](#) 76

Restoring Projects from a Microsoft SQL Database Server

This section describes how to restore a project backed up on a Microsoft SQL database server.

For details, see this [KB article](#).

To restore a project from a Microsoft SQL database server:

1. From the SQL Server Enterprise Manager, navigate to the database and select **Tools > Restore Database**.
2. Navigate to the backup file, and follow the restore procedure to complete the data restore process.
3. To align the **td** user on the new database server, run the following SQL commands on every restored schema (site administration, lab_project and each project schema):

```
EXEC sp_change_users_login 'Report'  
EXEC sp_change_users_login 'Update_One', 'td', 'td'  
EXEC sp_changedbowner      'td_admin'
```

Note: td_admin is the database administration user with the appropriate required database privileges.

4. In Site Administration, restore the project. For details, see "[Restore ALM Projects in New Site Administration Database Schema](#)" on page 138.
5. If the backup was performed while the project was active, realign the project repository. For details, refer to the *Micro Focus Application Lifecycle Management Administrator Guide*.

Restoring Projects from an Oracle Database Server

This section describes how to restore a project backed up on an Oracle database server.

For details, see this [KB article](#).

To restore a project from an Oracle database server:

1. Copy the backup file to the Oracle server machine.
2. Using the SQL*Plus utility, log in to the Oracle server using the **system** account.
3. Create a user for the ALM project. Make sure you create it with the same name as the project name (or the Oracle user name) when the project was exported.

Use these SQL statements:

```
CREATE USER [<project name>] IDENTIFIED BY tdttdt DEFAULT TABLESPACE TD_data  
TEMPORARY TABLESPACE TD_TEMP;
```

```
GRANT CONNECT,RESOURCE TO [<project name>];
```

4. Locate the **\Utilities\Databases\Scripts** directory. Open the **qc_project_db_oracle.sql** file and follow the instructions.
5. Using the command line, type **imp** to run the import utility.
6. Follow the prompt, and log in to the Oracle server using the **system** account.

After all tables have been successfully imported, a confirmation message displays.

Restoring a Repository from the File System

This section describes how to restore a repository backed up in the file system.

To restore a repository from the file system:

1. Copy the backed up repository to the ALM repository.
2. In Site Administration, restore the project. For details, see ["Restore ALM Projects in New Site Administration Database Schema" on page 138](#).
3. If the backup was performed while the project was active, you must restore the database and the file system from a backup that was created **after** the database backup was created, realign the project, and then activate the project. This procedure must always be performed during disaster recovery. For details, refer to the *Micro Focus Application Lifecycle Management Administrator Guide*. If this process is done to recover certain files or directories, you can skip the realignment.

Restoring LAB_PROJECT

Before restoring other LoadRunner Enterprise projects, you must first restore **LAB_PROJECT**, and then any LoadRunner Enterprise **template** projects.

You restore **LAB_PROJECT** from the Lab Management tab in Site Administration. For details, refer to the *Micro Focus ALM Lab Management Guide*.

You restore LoadRunner Enterprise 11.00 or later projects in Site Administration.

Verify Projects Again

Before proceeding, run the verification tool again to make sure that all problems have been fixed.

Copy Site Administration Database Schema to the New Database Server

To upgrade a copy of the Site Administration database schema on a new database server machine, you must copy the schema from the database server that was used in the previous ALM system to the database server that will be used in the new ALM system.

You perform this step before installing ALM 15.0 because the schema upgrade option is defined as part of the installation configuration.

Perform the required steps for backing up, removing, and restoring databases for your database type. For assistance contact your database administrator.

Note: The database user must have the same permissions as the user installing ALM.

When copying and upgrading the Site Administration database schema, ensure that the existing project refers to the production project database and shared repository, if applicable. When using a staging or side by side upgrade prior to starting the server update, update the following columns in the PROJECTS table in the Site Administration database schema to their new values:

- PHYSICAL_DIRECTORY
- DBSERVER_NAME
- DB_CONNSTR_FORMAT
- DB_USER_PASS

Chapter 13: Upgrading the Site Administration Database Schema

When installing ALM 15.0 , you can choose to create a new Site Administration schema on the database server, or you can upgrade a copy of the existing schema. This chapter discusses considerations, guidelines, and prerequisites for upgrading a copy of the existing schema.

This section includes:

- [Schema Upgrade Guidelines](#) 79
- [Recovering a Lost Confidential Data Passphrase](#) 80
- [Managing Schema Changes](#) 81

Schema Upgrade Guidelines

Upgrading a copy of the existing schema is a useful option if you are installing ALM 15.0 on a new ALM server machine. Creating a copy of the existing schema and then upgrading the copy enables you to work with new and upgraded projects.



Example:

If your ALM 12.00 schema contains a project called **my_project**, by creating a copy of the Site Administration ALM 12.00 schema and then upgrading it to ALM 15.0 , the **my_project** project is available in Site Administration in both ALM 12.00 and ALM 15.0 .



Oracle database servers: The new database schema is created in the same tablespace as the existing Site Administration database.

When you upgrade a copy of the existing Site Administration database schema, the copy that is created is independent of the existing schema. Any changes subsequently made to the original schema through updates in your previous version of Quality Center or ALM are not reflected in the upgraded copy of the Site Administration database schema that ALM 15.0 uses.

Therefore, consider the following guidelines:

ALM users	After you install ALM 15.0 , if you add or delete users or update user details in your previous version of ALM/Quality Center, you must make the same changes in ALM15.0 .
------------------	--

ALM configuration parameters	After you install ALM 15.0 , if you modify configuration parameters in your previous version of ALM/Quality Center, you must make the same changes in ALM 15.0 .
Server node configuration	If you are working with server nodes, in the Servers tab in Site Administration for ALM 15.0 , you must reconfigure the settings for the ALM log file and the maximum number of database connections.
ALM repository path	The repository path in your previous version must be defined as a network path, so that it can be accessed by both the previous ALM/Quality Center installations and by ALM 15.0 . Make sure that the project is active on one ALM server but not on both.

Recovering a Lost Confidential Data Passphrase

The Confidential Data Passphrase encrypts passwords that are used for accessing external systems (databases and LDAP).

When configuring the installation, you must enter the same passphrase that was used in the previous installation. If you do not know the passphrase, perform the following steps.

Note: This procedure can be performed whether you are installing ALM15.0 on the same machine as the existing installation, or on a new or separate machine, for example, if you are adding a node to a cluster. If you are not sure on which server machine to install ALM 15.0 , see "[Suggested ALM System Configuration](#)" on page 61.

1. On the machine where ALM is currently installed, navigate to the **C:\ProgramData\Micro Focus\ALM\conf** directory.

Tip: The **ProgramData** folder is hidden by default. To show hidden files and folders, perform the relevant steps for your operating system.

2. Create a copy of the **qcConfigFile.properties** file
If you are installing ALM on a new server machine, place the copy on the machine where you plan to run the new installation. Place the file in the same location on the new machine.

Tip: If the **...\ALM\conf** directory does not exist on the new server machine, manually create it. In such a case, make sure that the new directory has the required permissions to be accessed by the configuration tool.

3. Open the file and delete all information except for the line that starts with **initstring**.

4. Save the copy. If you are installing ALM on a new machine, skip to step 6.
5. If you are upgrading ALM on the same machine as the previous installation:
 - a. Uninstall the current version of ALM. For information about uninstalling ALM, see ["Uninstalling ALM" on page 133](#). Uninstalling ALM does not remove the existing **qcConfigFile.properties** file.
 - b. Overwrite the existing **qcConfigFile.properties** file with the version you edited in step 3.
6. When you run the installation, the wizard detects a previous ALM installation and prompts you to accept the current settings. Accept the current settings. When the wizard reaches the Security page the previous Confidential Data Passphrase appears.

Managing Schema Changes

Changes to the existing Site Administration database schema may cause the upgrade process to fail. Examples of such changes are the deletion of tables or columns, or changes to field types.

If you are sure that the schema has been changed manually, perform the steps below to ensure a successful schema upgrade.

If you are unsure if the schema has been changed, proceed with the installation as normal. If the schema has been changed, the configuration process fails if the changes cannot be handled automatically. It is important that not all schema upgrade failures are the result of the schema changes. Check the error logs very carefully to identify the exact cause of the failure. If it is apparent that the failure was due to changes to the schema, proceed with the steps below. You will have to run the configuration process again.

To prevent the upgrade process from failing, perform one of the following actions:

Note: It is advisable to perform these actions in this order.

1. Manually repair inconsistencies between the old schema and the new schema. For details about manually repairing the old schema, see ["Changing the Database User Schema" on page 180](#).
2. If the change is known and you are sure the upgraded ALMserver can work with it, you can create an exception file that instructs ALM to ignore these changes during the upgrade process. After creating the exception file, save it in an accessible location on your system. After installing ALM the Site Administration Database Schema page in the wizard prompts you to add the file to the configuration process. As a result, the changes to the existing schema do not cause the upgrade process to fail.

To create an exception file:

- a. Copy the **SchemaExceptions.xml** file from the ALM installation directory. By default, the file is located in: **<ALM installation path>\ALM\data\sa\Admin\MaintenanceData**
- b. Place the copy of the file in an accessible location on your system.

c. Edit the file and define exceptions. For example:

- For an extra table:

```
<TableMissing>  
<object pattern="MY_Table" type="extra"/>  
</TableMissing>
```

- For an extra view:

```
<ViewMissing>  
<object pattern="MY_VIEW" type="extra"/>  
</ViewMissing>
```

- For an extra column:

```
<ColumnMissing>  
<object pattern="MY_COLUMN" type="extra"/>  
</ColumnMissing>
```

- For an extra index:

```
<IndexMissing>  
<object pattern="MY_INDEX" type="extra">  
</IndexMissing>
```

- For an extra constraint:

```
<ConstraintMissing>  
<object pattern="MY_CONSTRAINT" type="extra">  
</ConstraintMissing>
```

- For multiple occurrences of extra elements:

For example, multiple extra columns:

```
<ColumnMissing>  
<object pattern="MY_COLUMN_1" type="extra"/>  
<object pattern="MY_COLUMN_2" type="extra"/>  
</ColumnMissing>
```

d. Save the **SchemaExceptions.xml** file.

3. If you cannot manually repair the inconsistencies, or create an exception file, create a new schema and then migrate the projects to the new schema.

If ALM is already installed on the server machine, you can rerun the ALM Installation Wizard.

- a. In the Site Administration Database Schema page, select **Create a New Schema**.
- b. After the configuration process completes, migrate projects to the new schema using the **Restore Project** option in Site Administration. For details, refer to the *Micro Focus Application Lifecycle Management Administrator Guide*.

Part 5: ALM Installation and Configuration

Chapter 14: Installing ALM on Microsoft Windows Systems

This chapter describes how to install ALM on Windows operating systems. It also describes how to install ALM silently.

Note: For installation troubleshooting details, see "[Troubleshooting the ALM Installation](#)" on page 151.

This section includes:

- [Installation Considerations: Windows](#) 87
- [Installing ALM: Windows](#) 88
- [Installing ALM in Silent Mode: Windows](#) 99
- [Configure the IIS Mail Service](#) 100

Installation Considerations: Windows

Before installing ALM, consider the following:

Default ALM paths	<ul style="list-style-type: none"> • Installation path: C:\Program Files\Micro Focus\ALM • Server deployment path: C:\ProgramData\Micro Focus\ALM • Repository path: C:\ProgramData\Micro Focus\ALM\repository
Paths and files created automatically by the ALM	<ul style="list-style-type: none"> • C:\ProgramData\Micro Focus\ALM\conf • C:\ProgramData\Micro Focus\ALM\log
ALM logs	<p>The locations of the ALM Site Administration and client log files are subject to your settings. You can verify the locations from Site Administration.</p> <p>The installation log file is located in the ALM server installation folder.</p> <p>The deployment log file is located in C:\ProgramData\Micro Focus\ALM\log.</p>

Installation scenarios	<ul style="list-style-type: none">• Upgrading from ALM 12.5x or earlier to ALM 15.0. When upgrading a copy of an existing Site Administration database schema, consider the following:<ul style="list-style-type: none">• If you are using the existing settings as default, the default deployment path will be the same as the path used in the previous installation. This path can be changed.• If you are not using the existing settings as default, the default deployment path will be C:\ProgramData\Micro Focus\ALM. This path can be changed. <p>Note: The repository path of the upgraded projects will be the same as the path used in the previous installation.</p> <p>After upgrading, the newly created projects will use the repository path that was defined during the current installation.</p> <p>If you want to use the same repository path as it was before (default: C:\ProgramData\HP\ALM\repository), make sure to set it correctly during installation.</p>
-------------------------------	---

Installing ALM: Windows

Before installing ALM, consider the following:

- Verify that you meet the various installation prerequisites. For prerequisite information, see the relevant chapters in "[Installation Prerequisites](#)" on page 31.
- If you are planning to upgrade a copy of the existing Site Administration schema, the database server of the existing Site Administration schema and the database server of the existing Lab Project must be supported. If these database servers are not supported, you can disable the validation check. For details, refer to "[Disabling Validation Checks for the Installation Wizard](#)" on page 151.

Note: For the most up-to-date supported environments, see <http://admhelp.microfocus.com/alm/specs/alm-qc-system-requirements.htm>.

- If you are using Microsoft Windows Server 2019, in order to avoid the installation failure with the error "Flexeraax2\$aaa: Windows DLL failed to load", we recommend you set the following environment variable for Java before installing ALM:

```
JAVA_TOOL_OPTIONS= "-Dos.name=Windows Server 2016"
```

If the variable already exists, append the value "-Dos.name=Windows Server 2016" to it.

Remove the value from the variable after the installation.

- If you encounter problems during the ALM installation process, see "[Troubleshooting the ALM Installation](#)" on page 151 for troubleshooting suggestions.
- If you want to reconfigure ALM after the installation and configuration is complete, you must run the installation procedure again.
- If an error occurs during the installation procedure, you must uninstall and restart the installation procedure.
- If an error occurs during the installation procedure and the installation log file is not found, ensure that enough disk space is available for installation and deployment to the selected locations, and that system settings such as the open file resources limit are set to the maximum allowable value.

To install ALM:

1. Log in to the ALM server machine with the appropriate permissions. For a list of required permissions, see "[Required Permissions: Windows](#)" on page 37.
2. If Quality Center or ALM is installed on the machine, uninstall it. For information on uninstalling, see "[Uninstalling ALM from Windows Systems](#)" on page 133.

Cluster environment: Uninstall ALM from all nodes.

3. Make sure the following services are started on the machine:
 - a. Secondary Logon
 - b. Windows Management Instrumentation
4. Run the ALM **setup.exe**, and click **ALM Platform (Windows OS)**.

Note:

- The configuration settings are saved in the **qcConfigFile.properties** file. The file is created in the **C:\ProgramData\Micro Focus\ALM\conf** directory.
- Also, the **repid.txt** file is created in the **<ALM Repository path>\qc** folder. The file should not be moved from this location.
- If you are installing ALM on a secondary node of a cluster, some of the dialog boxes that are needed only for the primary node are not displayed.

5. The ALM Installation wizard starts, displaying the Welcome page. Click **Next**.
6. The License Agreement page opens.

Read the license agreement. To accept the terms of the license agreement, select **I accept the license terms**. Click **Next**.
7. The JDK/JRE Folder Selection page opens.

Browse to or enter the JDK or JRE folder path.

Note: ALM requires Java JDK or JRE to be installed prior to installing ALM. For details, see ["Java Installation" on page 54](#).

Click **Next**.

8. The Folder Selection page opens.

Browse to or enter the installation path, or accept the default.

Click **Next**.

9. If the wizard detects settings from a previous ALM installation, the Current Settings page opens.

Select **Use default values of existing configuration** to use the current settings as default settings for the current installation. You can make changes to any of the default settings during the wizard. Select **No** to clear all settings in the Configuration wizard.

Click **Next**

10. The Database Server page opens.

- a. Under **Database Type**, select the database type to be used in your ALM system.

If you select a **Microsoft SQL Server**, choose the authentication type:

Microsoft SQL Server (SQL Server Auth.)	Authenticates the user to the database using a database user name and password.
Microsoft SQL Server (Windows Auth.)	Windows authentication relies on the user being authenticated by the operating system.

Note: When upgrading projects to ALM 15.0 , you must use the same type of SQL authentication that you used when that project was originally created.

For details on database requirements, see ["Prerequisites: Oracle Database Servers" on page 41](#) or ["Prerequisites: Microsoft SQL Database Servers" on page 49](#).

- b. Select one of the following options:

- o **Database Parameters.** Select this option to enter database server information using the following fields:

DB host name	Type the database server host name or IP address. For example, dbsrv01.domain.com .
DB port number	Type the database server port number, or accept the default port number.

Oracle service name	If you selected Oracle as the database type, type the Oracle service name.
----------------------------	--

- o **Connection String.** Select this option to type a formulated database server connection string.

Oracle RAC database	Select Connection String , and enter a connection string, specifying the location of the tnsnames.ora file, and the TNS server to which ALM should refer. Use the following example: <pre>jdbc:mercury:oracle:TNSNamesFile=<tnsnames.ora location>; TNSServerName=OrgRAC</pre> For details on prerequisites for Oracle RAC support, see "Oracle RAC Support" on page 46
Microsoft SQL Server database	If your database requires SSL/TLS access, see "To configure a secure database connection for a new ALM installation:" on page 124.

- c. **DB admin user name.** Type the name of the user with the administrative permissions required to install ALM on the database server.
- d. **DB admin password.** Type the database administrator password.

Note: **DB admin user name** and **DB admin password** are not applicable for Microsoft SQL Server Windows Authentication.

Click **Next**.

11. The Site Administration Database Schema page opens.

a. In **Select Action**, choose one of the following:

Create a New Schema	<p>Creates a new Site Administration database schema and a new Lab_Project.</p> <p>Note: The installation log and the enable_extensions.txt file contain error messages stating "Schema differences were found". These errors can be ignored, they are generated as part of the schema enable extension mechanism and the upgrade mechanism.</p>
Upgrade a copy of the existing schema	<p>Creates a copy of the existing Site Administration database schema, and upgrades the copy. For details, see "Schema Upgrade Guidelines" on page 79.</p> <p>If you select this option, the Schema Exception File option appears. If you have defined an exception file for the upgrade process, click Browse and navigate to the location where it was saved before the installation. For details about exception files, see "Managing Schema Changes" on page 81.</p> <p>When working in a cluster environment, select this option if you have an existing primary node and you want to install ALM.</p> <p>Note: When you upgrade a copy of the existing Site Administration schema, ALM tries to copy LAB_PROJECT to the database server where the original LAB_PROJECT exists. If LAB_PROJECT is successfully copied, the new upgraded Site Administration schema points to the new copy of LAB_PROJECT. If LAB_PROJECT is not copied, a new empty LAB_PROJECT is created in the database server where the new Site Administration database schema is created. For details, see "LAB_PROJECT Installation Considerations" on page 101</p>

<p>Connect to existing schema / second node</p>	<p>This option can be used in two scenarios:</p> <ul style="list-style-type: none"> ○ If you are reinstalling ALM and would like to reconnect to the same Site Administration database schema. ○ If you have an existing node and you want to install ALM on another node to create a cluster. For details on cluster configuration, see "Clustering: Windows" on page 38. <div style="background-color: #e6f2e6; padding: 10px; margin-top: 10px;"> <p>Note: This option enables you to connect to an ALM15.0 Site Administration database schema only. To connect to an earlier version, you must first upgrade the schema. For details, see "Upgrading the Site Administration Database Schema" on page 79.</p> </div>
--	--

b. When creating a new schema, in **Database Name**, enter the name of the database.

c. When connecting to ALM on an **Oracle database server**:

If you are installing ALM on a secondary node or if the Site Administration database already exists, the new Site Administration database schema is created in the same tablespace as the existing schema. Continue with the Security step below.

Type the following information:

- **Default Tablespace.** Select a default storage location from the list.
- **Temporary Tablespace.** Select a temporary storage location from the list.

d. Under **SA Schema Details**, type the following information:

- **Schema name.** Type a Site Administration database schema name, or accept the default schema name. The Site Administration database schema name can contain English characters or numbers only.

Note: When upgrading an existing Site Administration database schema to work in ALM 15.0 , you must use the same name that you used before the upgrade.

- **Schema password.** Enter the following information, depending on your database type:

<p>Oracle:</p>	<p>The default tdtdtd password is created, which you can accept or change.</p>
-----------------------	---

Microsoft SQL Server (SQL Auth.):	ALM uses the td user to create the Site Administration database schema. For more details on the td user, see "User Permissions for Connecting ALM to a Microsoft SQL Database Server" on page 50. Type a password for the td user that complies with your organization's password policy, or keep the default tdtdtd password.
Microsoft SQL Server (Windows Auth.):	Not applicable.

- **New Schema name.** If you selected **Upgrade a copy of the existing schema**, type a name for the upgraded copy of the database schema. The Site Administration database schema name can only contain English characters or numbers.

Click **Next**.

12. The License Key page opens.

Note: If you selected **Connect to existing schema / second node** in the previous step, the License Key step is skipped. Continue with the Security step below.

Select one of the following options:

ALM server license key	Browse to or enter the ALM license file path.
Use Evaluation Key	<p>If you do not have a license file, select this option for a 30-day trial version of ALM. From the drop-down list, select the edition to install for the trial period.</p> <div style="border-left: 2px solid green; padding-left: 10px; margin-top: 10px;"> <p>Note: If you install Quality Center Community Edition, you must assign named licenses to your users. Only then can the users successfully log in to ALM and see the appropriate modules. For details on assigning named licenses, see the <i>Micro Focus Application Lifecycle Management Administrator Guide</i>.</p> </div>

License URL Parameters	<p>This option configures the AutoPass License Server (APLS).</p> <ol style="list-style-type: none">Enter the license server host and port.To secure the communication, select HTTPS. <p>Alternatively, you can also configure APLS after the ALM installation. Perform the following steps:</p> <ol style="list-style-type: none">From the ALM server machine, navigate to C:\ProgramData\Micro Focus\ALM\repository\sa\Admin\MaintenanceData\confEdit <code>clusterSettings.properties</code>Define values for the following fields: <code>AUTOPASS_SERVER_PROTOCOL</code>, <code>AUTOPASS_SERVER_PORT</code>, <code>AUTOPASS_SERVER_NAME</code>.Save and restart the ALM server. <p>For information on how to use APLS to organize and manage your ALM licenses, refer to the <i>Micro Focus Application Lifecycle Management Administrator Guide</i>.</p>
-------------------------------	--

Click **Next**.

13. The Security page opens.

a. Confidential Data Encryption

Passwords for accessing external systems (databases and LDAP) are stored by ALM after encryption. Enter a **Confidential Data Passphrase** that ALM uses to encrypt the information.

Make a note of the passphrase for future support calls. You need the passphrase if you choose to redeploy ALM and choose to upgrade a copy of the existing Site Administration Database Schema. The passphrase is also required for the next ALM installation.

Select **Use default value for Passphrase** to use the default Confidential Data Encryption passphrase. By selecting this option, the encrypted information is more vulnerable to unauthorized access.

Confidential Data Passphrase Considerations

- You must enter the same passphrase that was used for the previous installation. If you do not have a note of the passphrase, there is a workaround to recover it. However, you will have to abort the configuration process and then begin again once the workaround is complete. For details, see "[Recovering a Lost Confidential Data Passphrase](#)" on page 80.
- If you are planning to migrate LoadRunner Enterprise and/or Lab Management enabled projects onto the server on which you are performing the installation, you must use the same Confidential Data Passphrase that was defined on the server on which the projects were created.

- If you are installing ALM on a cluster, you must use the same passphrase for all nodes.
 - After completing the server configuration wizard, you cannot change the confidential data encryption passphrase.
 - The passphrase is case-sensitive. Also check that there are no empty spaces before or after the passphrase. The passphrase must contain only alphanumeric characters.
- b. Communication Security

Communication between ALM and other applications is enabled after authentication by a Single Sign-On (SSO) token. Enter a Communication security passphrase that ALM uses to encrypt the SSO token.

Note:

- The communication security passphrase is stored as the value of the **COMMUNICATION_SECURITY_PASSPHRASE** site configuration parameter. For details, refer to the *Micro Focus Application Lifecycle Management Administrator Guide*.
- The passphrase must contain only alphanumeric characters, and must contain at least 12 characters .

Click **Next**.

14. The Site Administrator User page opens.

You use the site administrator name and password that you define here to log in to Site Administration for the first time. After installation, you can change the site administrator or add other site administrators. Enter a site administrator user name (maximum length 60 characters) and password, and retype the password to confirm.

If you are upgrading a copy of the existing Site Administration database schema, by default the same user and credentials are applied to the upgraded schema. To create an additional user, select **Create additional Site Administrator user** (this field appears only when you are upgrading a copy of the existing schema).

Note:

- The user name cannot include the following characters: \ / : * ? " < > |
- The password cannot be longer than 20 characters.
- It is important that you remember the site administrator user name and password so you can log in to Site Administration.

Click **Next**.

15. The ALM Service page opens.

Type the **User Name, Password, and Domain** to be used to run the application server as a service. This enables the service to access your local network.

If the repository is on a remote machine, or if you are using a Microsoft SQL server with Windows authentication, enter the details of a domain user who has administrative permissions for the SQL server and who is a local administrator.

Click **Next**.

16. The Repository page opens.

In the **File repository path** box, click the browse button to choose a repository path, or accept the default path. Make sure to enter a unique, case-sensitive name for the repository folder.

Note:

- Make sure you select a path where you have full read and write permissions.
- To work with cluster nodes, make sure that all nodes have access to the file repository path and that the path is UNC. All nodes in the cluster must have the same string for the repository path.
- The length of the file repository path cannot exceed 200 characters.
- The file repository path cannot reside on the root folder.
- Due to a Windows limitation, the file repository path cannot be on a mapped drive.

Using the **BASE_REPOSITORY_PATH** site configuration parameter, you can create a location for a repository path where new projects will be located. Performing this action, therefore, means there will be two repository paths: the previous path containing older projects, and a second path containing projects created subsequently. For details, refer to the *Micro Focus Application Lifecycle Management Administrator Guide*.

Click **Next**.

17. The Application Settings page opens.

- a. In the **Deployment Path** box:

Specify the location in which you want to deploy ALM application files. Click the browse button to choose a location, or accept the default location. We recommend that you keep the default.

Note:

- The length of the deployment path cannot exceed 200 characters.
- Due to a Windows limitation, the deployment path cannot be on a mapped drive.

b. In the **Web Server** box:

Change or keep the default HTTP port number. The default port is 8080.

Note: If an error message is displayed that the default port is unavailable, the port may be in use by another application running on the server machine. Either locate the application and stop it, or enter a different port number. To enter a different port number, you must first change the port number on the application server. For details, see ["Changing the Application Server Port Number" on page 115](#). Then proceed with the configuration as normal.

c. Select **Start ALM server once installation completed** to automatically start the server when the installation is successfully completed.

Click **Next**.

18. The Mail Service page opens.

To enable ALM to send emails to users in an ALM project, select a mail protocol. For **SMTP Service**, type the server name and port.

If you selected **Microsoft IIS SMTP Service**, you must configure the Microsoft IIS SMTP service. For details, see ["Configure the IIS Mail Service" on page 100](#).

Click **Next**.

Note: The Mail Server can be configured after installation in Site Administration. For details, refer to the *Micro Focus Application Lifecycle Management Administrator Guide*.

19. The Installation Summary page opens. To change any settings, click **Previous**.

To accept the settings and start the configuration process, click **Install**.

20. The Install Complete page opens.

If the installation process ends with warnings, check the installation logs for details, and start the server manually. For details see ["Checking the Installation and Configuration Log Files" on page 155](#).

21. If you are prompted to restart the machine, you can choose to restart at a later time, but you must restart before you use ALM. You must also restart before you install any ALM related files, such as integration add-ins.

22. If you are using an Oracle RAC database, verify that the **ORACLE_RAC_SUPPORT** site configuration parameter is set to **Y**. For details, refer to the *Micro Focus Application Lifecycle Management Administrator Guide*.
23. The installation of ALM is now complete. Proceed to ["Starting ALM" on page 103](#).

Installing ALM in Silent Mode: Windows

A silent installation runs the entire setup process in the background without requiring you to navigate through setup screens and input selections. Instead, all configuration parameters are assigned values that you define in a configuration file (**qcConfigFile.properties**). When running an installation in silent mode, no messages are displayed. Instead, you can view installation information in the log file, including information on whether the installation was successful. The installation log file can be found under the **<installation folder>\log** directory. The deployment and configuration log file can be found in the following path **C:\ProgramData\Micro Focus\ALM\log** directory.

To troubleshoot problems you may encounter while running the installation, see ["Troubleshooting the ALM Installation" on page 151](#).

If you want to reconfigure ALM after the installation and configuration is complete, you must run the installation procedure again.

If an error occurs during the installation procedure, you must uninstall and restart the installation procedure.

If an error occurs during the installation procedure and the installation log file is not found, ensure that enough disk space is available for installation and deployment to the selected locations, and that system settings such as the open file resources limit are set to the maximum allowable value.

To install ALM in Silent Mode:

Note: To run silent installations for different configurations, you can create multiple configuration files.

1. Uninstall the existing version of ALM/Quality Center from the machine.
2. Create the **qcConfigFile.properties** file.

The file defines the configuration values that are used during the installation.

We recommend that you use an existing file from a prior installation of ALM.

If there is no existing file, you can create one manually. However, this can be a complicated process that is open to errors. We suggest that you create one by running a normal installation. During the installation process, the file is automatically created. The configuration values you define during the installation process are recorded in the file. Even

if you subsequently uninstall ALM, you can keep and edit the file as needed for future installations.

The file is automatically saved in the following path **C:\ProgramData\Micro Focus\ALM\conf** directory.

3. Update the **installer.properties** file with the installation path and the path of the configuration file, if they are not in their default locations.

Note:

- Neither the length of the file repository path nor the length of the deployment path can exceed 200 characters.
- Due to a Windows limitation, the deployment directory and the repository path cannot be on a mapped drive.

4. From the command line, run the **run_silent.bat** file.

If the installation process fails, check the installation logs for details. For details see ["Checking the Installation and Configuration Log Files" on page 155](#).

If the installation process ends with warnings, the ALM server does not automatically start. Check the installation logs for details, and start the server manually. For details see ["Checking the Installation and Configuration Log Files" on page 155](#).

Configure the IIS Mail Service

If you select **Microsoft IIS SMTP Service** as your mail server, you must configure the Microsoft IIS SMTP service as follows:

1. Open the Internet Information Services (IIS) Manager window.
2. In the Tree pane, right-click **Default SMTP Virtual Server** and select **Properties**. The Default SMTP Virtual Server Properties dialog box opens.
3. In the Access tab, click the **Connection** button. The Connection dialog box opens. Select **All except the list below** and click **OK**.
4. Click the **Relay** button. The Relay Restrictions dialog box opens. Select **All except the list below** and click **OK**.
5. Click **OK** to close the Default SMTP Virtual Server Properties dialog box.

Chapter 15: LAB_PROJECT Installation Considerations

When you select **Upgrade a copy of the existing schema** in the Installation wizard, ALM tries to copy LAB_PROJECT as well. Below is a more detailed explanation of the actions performed on LAB_PROJECT when upgrading a copy of the existing Site Administration schema:

1. ALM tries to copy LAB_PROJECT to the database server where the original LAB_PROJECT exists.
If LAB_PROJECT is successfully copied:
 - The new Site Administration schema points to the new LAB_PROJECT.
 - The copied LAB_PROJECT has an empty repository. You need to copy the repository from the source LAB_PROJECT.
 - The copied LAB_PROJECT must be upgraded.
2. If ALM fails to copy LAB_PROJECT to the database server where the original LAB_PROJECT exists, a new empty LAB_PROJECT is created in the database server where the new Site Administration database schema is created.

To copy the original LAB_PROJECT data to make it usable for the installation:

- Remove the new LAB_PROJECT.
- Create a copy of the original LAB_PROJECT database schema and repository:
 - Backup the original LAB_PROJECT database schema.
 - Restore a backup of the original LAB_PROJECT into the new installation database server.
 - Copy the source repository from the original LAB_PROJECT into the new installation repository.
- Update the **dbid.xml** file of the new LAB_PROJECT with the new:
 - Installation database server name
 - Connection string
 - Password
 - Repository location
- Restore the new LAB_PROJECT.
- Upgrade the new LAB_PROJECT.

Chapter 16: Starting ALM

This chapter introduces ALM options and resources. It also explains how to start ALM.

- [Browsing the ALM Program Folder](#) 103
- [Starting and Stopping ALM Services](#) 103
- [Starting ALM on a Client Machine](#) 103
- [Registering ALM on a Client Machine](#) 105

Browsing the ALM Program Folder

In Windows, after the ALM setup process is complete, the following items are added to your ALM program folder (**Start > Programs > ALM Server**):

Option (A-Z)	Description
ALM Tray Icon	Places the system tray icon in the system tray if it does not appear there.
Application Lifecycle Management	Opens ALM. For details, refer to the <i>Micro Focus Application Lifecycle Management User Guide</i> .
Site Administration	Opens the Site Administration application. For details, refer to the <i>Micro Focus Application Lifecycle Management Administrator Guide</i> .
Uninstall Application Lifecycle Management	Uninstalls ALM. For details, refer to " Uninstalling ALM " on page 133 .

Starting and Stopping ALM Services

In the system tray, right-click the ALM icon  and select **Start Application Lifecycle Management**, or **Stop Application Lifecycle Management**.

Starting ALM on a Client Machine

You launch ALM on your client machine from your Web browser.


Before logging in to ALM, you must first create a project in Site Administration. For details, refer to the *Micro Focus Application Lifecycle Management Administrator Guide*.

Note:

- To enable ALM to work with Micro Focus testing tools as well as third-party and custom tools, you must run the ALM Client Registration add-in, which registers ALM components on the client machine. For details, see "[Registering ALM on a Client Machine](#)" on the next page.
- If your users connect to ALM over a virtual environment, such as Citrix or VMware, you can deploy ALM components on a shared location that all users can access. To enable a shared deployment, run the **Shared Deployment for Virtual Environments** add-in from the Application Lifecycle Management Add-ins page. For details on installing add-ins, refer to the *Micro Focus Application Lifecycle Management Administrator Guide*.
- We recommend that you import the ALM Demo Project available from the ALM Help page (select **Help > Demo Project**). Importing this project enables you to run all lessons in the *Micro Focus Application Lifecycle Management Tutorial*. In Site Administration, import the ALM Demo file. For details on importing projects, refer to the *Micro Focus Application Lifecycle Management Administrator Guide*.

To start ALM:

1. Open your Web browser and type your ALM URL: **http://<ALM server name>[:<port number>]/qcbn**
2. For Single-Sign-On users:
 - a. If the user discovery page is displayed, add your user name or email address as specified in ALM. Click **Submit**.
 - b. In the IDP page, add your IDP credentials. Click the log in button.
3. The Application Lifecycle Management Options window opens.
4. Click the **ALM Desktop Client** link. Each time ALM is run, it carries out a version check. If it detects a newer version, it downloads the necessary files to your machine.

Tip: Click the **Open in Full Screen mode** icon  to open ALM in Full Screen mode. Full Screen mode enables you to take advantage of the entire screen when using ALM.

Keep in mind the following guidelines:

- If you do not have administrator privileges on your machine, and a Security Warning displays, click **Don't Install**. You are redirected to the Install screen.

- If file downloads are prohibited through your browser, you can install these files by using the ALM Client MSI Generator add-in, available from the Application Lifecycle Management Add-ins page (**Help > Add-ins**).
 - If you run ALM over a virtual environment, such as Citrix or VMware, only the system administrator can install a new version.
 - If files are downloaded, but the Login window does not display, you must install a Microsoft Hotfix on your machine. For details, see this [KB article](#).
5. Follow the on-screen instructions. After the ALM version has been checked and files have been updated as necessary, the Application Lifecycle Management Login window opens.

Note: If you are an external authentication user, you are not required to provide name and password in this window. Continue with step 9.

6. In the **Login Name** box, type your user name.
7. In the **Password** box, type the password. If you cannot remember your password, click the **Forgot Password** link. For details, refer to the *Micro Focus Application Lifecycle Management User Guide*.
8. Select the **Automatically log in to my last domain and project on this machine** check box if you want ALM to automatically log in to the last project in which you were working.
9. Click **Authenticate**. ALM verifies your user name and password and determines which domains and projects you can access. If you specified automatic login, ALM opens. If authentication fails, check that your user name and password are correct and try again.
10. In the **Domain** list, select a domain. By default, the last domain in which you were working is selected.
11. In the **Project** list, select a project. By default, the last project in which you were working is selected.
12. Click **Login**. ALM opens and displays the module in which you last worked during your previous session.

Registering ALM on a Client Machine

To enable you to work with other Micro Focus testing tools as well as third-party and custom tools, ALM must be registered on the client machine. To register ALM, run **ALM Client Registration** from the Application Lifecycle Management Tools page.

Note: If you are running previous versions of ALM/Quality Center on your machine, before registering ALM 15.0, make sure that all instances of ALM/Quality Center and any integration tools are closed.

Tools that Require Registering ALM Client Components

The following tools require that ALM client components be registered on the client machine:

ALM Add-ins	<ul style="list-style-type: none">• Unified Functional Testing Add-in Micro Focus Unified Functional Testing (UFT) comprises the product formerly known as Micro Focus QuickTest Professional and the product known as Micro Focus Service Test.<ul style="list-style-type: none">• Functionality provided by QuickTest is now known as GUI testing in UFT.• Functionality provided by Service Test is also known as API testing in UFT. <p>Note: Requires that Data Execution Prevention (DEP) be disabled in Windows 7.</p> <ul style="list-style-type: none">• Micro Focus Screen Recorder Add-in• Service Test Add-in• ALM Synchronizer• Defects and Requirements Exchange with Micro Focus Service Manager and ALM
Other	<p>Unified Functional Testing tests</p> <p>Micro Focus Unified Functional Testing (UFT) comprises the product formerly known as Micro Focus QuickTest Professional and the product known as Micro Focus Service Test.</p> <ul style="list-style-type: none">• Functionality provided by QuickTest is now known as GUI testing in UFT.• Functionality provided by Service Test is also known as API testing in UFT. <p>Note:</p> <ul style="list-style-type: none">• Required to run tests.• Requires that Data Execution Prevention (DEP) be disabled in Windows 7.

Chapter 17: Integrating the ALM Application Server with a Web Server

To enhance the security of your ALM deployment, we recommend placing the ALM server behind a secure reverse proxy, either an Apache or IIS web server. Such configuration is also required to support external authentication. If you are not using a secure reverse proxy, we recommend configuring SSL on the ALM server itself. For details on configuring SSL, see "[Managing the ALM Application Server](#)" on page 115.

Configuring IIS as a reverse proxy

To integrate ALM with a web server, you configure the web server to redirect requests to the ALM Application Server. You configure the web server to work in proxy HTTP mode.

To configure IIS to work as a reverse proxy:

Note: The following instructions apply to IIS 7.0 and later.

1. Using Server Manager, install the IIS server using default settings. You do not need to enable any other extensions.
2. Install the URL rewrite package from <http://www.iis.net/downloads/microsoft/url-rewrite>.
3. Install Application Request Routing (ARR) for IIS from <http://www.iis.net/downloads/microsoft/application-request-routing>.

Note: You may need to disable Internet Explorer ESC and run Internet Explorer as an administrator.

If you have no direct access to the internet from your server, you can obtain the ARR 3.0 standalone version that contains everything you need, including the URL rewrite package, from <http://www.microsoft.com/en-us/download/details.aspx?id=40813>. Download ARR 3.0 to your client, copy it to the server, and install it on the server.

4. Make sure the IIS Web server is stopped.
5. Open IIS Manager and ensure you have an element named **Server Farms** under the relevant IIS server node.

Note:

- If there is no **Server Farms** element and you are using a Windows 2012 server, uninstall Microsoft Web Farm Framework and download the latest version from http://download.microsoft.com/download/5/7/0/57065640-4665-4980-a2f1-4d5940b577b0/webfarm_v1.1_amd64_en_us.msi.
- If you fail to install a Web Farm for IIS 10, see this [KB article](#).

6. Right click **Server Farms** and click **Create Server Farm**.
7. Enter a name for the farm and click **Next**.
8. Click **Advanced settings** and change the ports to match your ALM Jetty ports. The default ALM Jetty ports are 8080 for http and 8443 for https.
9. Under **Server address**, type the name or IP address of the ALM server you want to add to the farm.
10. Click **Add** to add the server.

Note: Repeat steps 9 - 10 to add more ALM servers to use IIS as a load balancer in an ALM cluster.

11. Click **Finish**.
12. Click **Yes** in the **Rewrite Rules** dialog box that opens. This adds a URL rewrite rule that causes IIS to forward all incoming requests to the ALM Server.
13. Select the new Server farm element created.
14. Double-click **Proxy**.
15. Set **Time-out (seconds)** to 35.
16. Set **Response buffer threshold** to 0.
17. Click **Apply**.

Note: This change is applied only to the Application Request Routing proxy.

18. Enable the proxy.
 - a. Select the main tree node (the server name), click **Application Request Routing Cache**, and then click **Server Proxy Settings** in the **Proxy** section.
 - b. Enable **Enable proxy**.
 - c. Verify that **HTTP version** is valued with **Pass Through**.
 - d. Verify that **Reverse rewrite host in response headers** is enabled.
 - e. Click **Apply**.
19. Restart the IIS Web server.

You can now connect to your ALM site using the following URL: **http://<IIS server name>/qcbn**.

20. If you are using IIS with multiple servers farms:
 - a. Add another server farm for the other server group.
 - b. Modify the URL Rewrite rule for the ALM server farm:
 - i. Select the main tree node (the server name) and click **URL Rewrite**.
 - ii. Edit the **Inbound Rule**.
 - iii. Change **Using** from **Wildcards** to **Regular Expressions**.
 - iv. Change **Pattern** to **(^qcbn(.*)**.
 - v. Click **Apply**.
 - c. Modify the URL Rewrite rule for the other server farm:
 - i. Select the main tree node (the server name) and click **URL Rewrite**.
 - ii. Edit the **Inbound Rule**.
 - iii. Change **Using** from **Wildcards** to **Regular Expressions**.
 - iv. Change **Pattern** to reflect the other server group .
 - v. Click **Apply**.
 - d. Restart the IIS Web server.

Configuring IIS as a Secure Reverse Proxy

To configure IIS to work as a secure reverse proxy:

Note: For detailed instructions, refer to the IIS documentation.

1. Ensure that you configured IIS to work as a reverse proxy.
2. Install the server certificate in IIS.

Note: The server certificate must have a password protected private key.

In IIS Manager:

- Import your server certificate:
Select **Server > Certificates > Import**.
- Add a listener on a secure port:
Select **Default Website**.
Edit **Bindings**.

Click **Add**.

Select **https** and select your certificate.

3. In **SSL Settings** for your website, configure IIS to require an SSL connection.
4. Verify that you can access the ALM server through the IIS virtual IP using the https protocol.

Configuring the IIS Web Server for SSL Offloading

SSL Offloading means that IIS is configured to connect to ALM over http and not https. In this case, perform the following configuration:

1. Edit the **qcbn** inbound rule and add the following server variable:
Set **name="HTTP_X_FORWARDED_PROTO" value="https"**.
2. In **Action Properties**, change the protocol from https to http.
3. Restart IIS so it will read the configuration.

Configuring Apache as a reverse proxy

To configure Apache to work as a reverse proxy:

Note: It is recommended that you use Apache HTTP Server version 2.2.

1. Make sure the Apache Web server is stopped.
2. Navigate to the **<Apache Home directory>\conf** directory.
3. Create a backup copy of the **httpd.conf** file.
4. Open the **httpd.conf** file.
5. Uncomment or add the following load module commands:

```
LoadModule proxy_module modules/mod_proxy.so
LoadModule proxy_http_module modules/mod_proxy_http.so
LoadModule rewrite_module modules/mod_rewrite.so
LoadModule headers_module modules/mod_headers.so
```

6. Add the following section to the end of the file:

```
# Turn off support for true Proxy behavior as we are acting as
# a reverse proxy
ProxyRequests Off
```

```
# Turn off VIA header as we know where the requests are proxied
ProxyVia Off
# Set the permissions for the proxy
<Proxy *>
AddDefaultCharset off
Order deny,allow
Allow from all
</Proxy>
# Turn on Proxy status reporting at /status
# This should be better protected than: Allow from all
ProxyStatus On
<Location /status>
SetHandler server-status
Order Deny,Allow
Allow from all
</Location>
# Configuring mod_proxy_http
# To connect to servlet container with HTTP protocol, the ProxyPass
# directive can be
# used to send requests received on a particular URL to a Jetty instance.
ProxyPreserveHost off
ProxyPass /qcbn http://<ALM server name>:8080/qcbn
ProxyPassReverse /qcbn http://<ALM server name>:8080/qcbn
# For LoadRunner Enterprise deployments, add the following:
ProxyPass /loadtest http://<LoadRunner Enterprise server name>/loadtest
ProxyPass /LoadTest http://<LoadRunner Enterprise server name>/LoadTest
ProxyPass /Loadtest http://<LoadRunner Enterprise server name>/Loadtest
ProxyPassReverse /loadtest http://<LoadRunner Enterprise server
name>/loadtest
ProxyPassReverse /LoadTest http://<LoadRunner Enterprise server
name>/LoadTest
ProxyPassReverse /Loadtest http://<LoadRunner Enterprise server
name>/Loadtest
# Rewrite rule trailing slash must be used in the VirtualHost section
RewriteEngine On
# Add trailing slash if was not present in the original request
RewriteRule ^/qcbn$ /qcbn/ [R]
```

7. Save the changes to the file.
8. Run **httpd -t** from the Apache bin folder to check the syntax of the file.
9. Restart the Apache Web server.

You can now connect to your ALM site using the following URL: **http://<ALM virtual server name>[:<apache port number>]/qcbn**.

Configuring Apache as a Secure Reverse Proxy

To configure Apache to work as a secure reverse proxy:

1. Open the **httpd.conf** file.
2. Uncomment **ssl_module**:

```
LoadModule ssl_module modules/mod_ssl.so
```

3. Uncomment the **httpd-ssl.conf** file:

```
# Secure (SSL/TLS) connections  
Include conf/extra/httpd-ssl.conf
```

4. Close the **httpd.conf** file and open the **httpd-ssl.conf** file. By default it is in **/<apache-directory>/conf/extra**.
5. In the **httpd-ssl.conf** file, activate the SSL port 443:

```
Listen 443
```

6. Add the **SSLProtocol** parameter:

```
SSLProtocol -SSLv2 -SSLv3 +TLSv1
```

7. Change the cache settings:

```
LoadModule socache_shmcb_module modules/mod_socache_shmcb.so  
SSLSessionCache "shmcb:<apacheAbsoluteFolder>/logs/ssl_scache(512000)"
```

8. Modify the **VirtualHost** and **ServerName** parameters:

```
<VirtualHost <fully qualified server name>:443>  
ServerName <fully qualified server name>:443
```

9. Add the SSL certificates to the **VirtualHost** section:

```
# Server Certificate  
SSLCertificateFile " /<apache-directory>/conf/WebServerPublicCert.pem"  
# Server Private Key:  
SSLCertificateKeyFile " /<apache-  
directory>/conf/WebServerPrivateCert.pem"
```

10. Restart Apache so it will read the new configuration.

Run **<apache-directory>/bin/apachectl -k restart**

11. Verify that Apache works as a secure proxy server.

Go to **https://webserver/qcbin**. Make sure the ALM home page is displayed.

Note: The web server name must be in FQDN (fully qualified domain name) format when using a secure connection.

12. After verifying that Apache works as a secure proxy server, close the non-secure port.
 - a. Open the **httpd.conf** file.
 - b. Comment out the **Listen** parameter:

```
#Listen 80
```

Configuring the Apache Web Server for SSL Offloading

SSL Offloading means that Apache is configured to connect to ALM over http and not https. In this case, perform the following configuration:

1. Navigate to the **<Apache Home directory>\conf** directory.
2. Create a backup copy of the **httpd.conf** file.
3. Open the **httpd.conf** file.
4. Add the following section if encrypted communication terminates on the Apache server:

```
#####  
# add the following line if SSL is terminated/offloaded on Apache server  
#####  
RequestHeader set X-Forwarded-Proto https
```

5. Save the **httpd.conf** file.
6. Restart Apache so it will read the configuration.

Chapter 18: Managing the ALM Application Server

This chapter contains information relating to managing the ALM Application Server, as well as information regarding general Java management tools.

This chapter includes

- [Changing the Heap Memory Size](#) 115
- [Changing the Application Server Port Number](#) 115
- [Configuring Secure Access on Windows Systems](#) 116
- [Configuring Secure Database Access](#) 121
- [Application Server Management Tools](#) 125

Changing the Heap Memory Size

After you install ALM, you may need to change the heap memory values. For example, you may want to increase the heap size if there is an increase in the number of active projects in ALM, or an increase in the number of concurrent user sessions.

Note:

- The maximum heap value cannot exceed your maximum memory (RAM) size.
- On a machine running on a 32-bit operating system, the heap memory size should not exceed 1024 MB.

To change the heap memory size:

1. Verify that all users have logged out of ALM projects and stop the ALM Service. In the system tray, right click the ALM icon and choose **Stop Application Lifecycle Management**.
2. In the **ALM deployment** path, open the **wrapper.conf** file.
3. Change the **wrapper.java.maxmemory** value as necessary.
4. Restart the ALM Service. In the system tray, right click the ALM icon and choose **Start Application Lifecycle Management**.

Changing the Application Server Port Number

After you install ALM, you may need to change the application server port number.

It is possible that the default application server port may be in use by another application that is running on the same machine. In this case, you can either locate the application that is using the port and stop it, or you can change the application server port on the machine.

To change the application server port number:

1. Verify that all users have logged out of ALM projects and stop the ALM Service. In the system tray, right click the ALM icon and choose **Stop Application Lifecycle Management**.
2. Navigate to the **<ALM deployment path>/server/conf/jetty.xml** file.
3. Change the **jetty.port** value.
4. Start the ALM Service. In the system tray, right click the ALM icon and choose **Start Application Lifecycle Management**.

Configuring Secure Access on Windows Systems

This section describes how to configure a secure connection to and from ALM when ALM is installed on a Windows system. For the procedure, see ["Configure a secure connection to the ALM application server \(Jetty\)" on the next page](#).

When the ALM server connects to another server, such as the LoadRunner Enterprise server, that requires a secure connection, you must configure trust on the ALM server to the authority that issued the remote server certificate.

For more secure communication with the ALM server, you can configure Jetty to use TLS 1.2.

When enabling a secure connection, you should also ensure encrypted communication with cookies by setting a site configuration parameter.

In this section:

- ["Configure trust on the ALM server" below](#)
- ["Configure a secure connection to the ALM application server \(Jetty\)" on the next page](#)
- ["Use TLS 1.2 instead TLS 1.1, TLS 1.0 or SSLv3" on page 119](#)
- ["Redirect http to https" on page 120](#)
- ["Set up encrypted communication with cookies" on page 120](#)

Configure trust on the ALM server

Configure trust on the ALM server, when ALM connects to another server over a secure connection.

1. Obtain the certificate of the root and any intermediate Certificate Authority that issued the remote server certificate.
2. On the ALM server, go to the java bin. For example:

```
C:\Program Files\Java\jre\bin
```

3. Import each certificate into the java truststore by using a keytool command. For example:

```
C:\Program Files\Java\jre\bin\keytool -import -trustcacerts -alias myCA -  
file <path to certificate> -keystore "c:\Program  
Files\java\jre\lib\security\cacerts"
```

4. If your access is denied, run CMD as an administrator.

Configure a secure connection to the ALM application server (Jetty)

1. Obtain the server certificate issued to the name of this server in java keystore format. It must contain a private key and the certificate authority that issued it. For details on creating certificates using the Certificate Authority, see this [KB article](#).
2. Verify that all users have logged out of ALM projects and stop the ALM Service as follows: In the system tray, right click the ALM icon and choose **Stop Application Lifecycle Management**.
3. Navigate to the **<ALM Deployment Folder>\server\conf** directory and make a backup of the **jetty-ssl.xml** file and the **keystore** file located in this directory.
4. Copy your keystore file to this directory and rename it **keystore**.
5. Open the **jetty-ssl.xml** file, search for **sslContextFactory**, and change the password to your password (**mypass**):

```
<Set name="KeyStorePath"><Property name="jetty.base" default="." /><Property  
name="jetty.keystore" default="conf/keystore"/></Set>  
<Set name="KeyStorePassword"><Property name="jetty.keystore.password"  
default="<b>mypass</b>"/></Set>  
<Set name="KeyManagerPassword"><Property name="jetty.keymanager.password"  
default="<b>mypass</b>"/></Set>  
<Set name="TrustStorePath"><Property name="jetty.base" default="." /><Property  
name="jetty.truststore" default="conf/keystore"/></Set>  
<Set name="TrustStorePassword"><Property name="jetty.truststore.password" default="<b>  
<b>mypass</b></b> " /></Set>
```

6. (Strongly recommended) To obfuscate the password, perform the following steps:
 - a. Determine the version of Jetty that you are using. Locate the **<ALM Deployment Folder>\server\lib\jetty-util-<your-jetty-version>.jar** file. **<your-jetty-version>** is the version of Jetty you are using.
 - b. Open Command Prompt (cmd) and run the following commands:

```
$ set JETTY_VERSION=<your-jetty-version>  
<JAVA_HOME>\java -cp <ALM Deployment Folder>\server\lib\jetty-util-  
$JETTY_VERSION.jar org.eclipse.jetty.util.security.Password  
<password>
```

For example, if you run the following command:

```
"C:\Program Files\java\jre\bin\java.exe" -cp <ALM deployment folder>\server\lib\jetty-util-9.1.4.v20140401.jar org.eclipse.jetty.util.security.Password changeit
```

The output will appear as follows:

```
changeit  
OBF:1vn21ugu1saj1v9i1v941sar1ugw1vo0
```

- c. Replace the plain text password in the **jetty-ssl.xml** file with the **OBF** prefix.
7. Save the **jetty-ssl.xml** file.
8. Edit the **start.ini** file and uncomment the following lines:

```
jetty-ssl.xml  
jetty-https.xml
```

9. Save the **start.ini** file.
10. Restart the ALM Service as follows: In the system tray, right click the ALM icon and choose **Start Application Lifecycle Management**.
11. Check the **wrapper.log** file. If you do not see the "Server is ready!" message, correct the errors shown in the log.
12. Connect to ALM using the SSL connection, such as **https://<ALM server>:8443/qcbin**.
13. After ensuring that the SSL connection works, disable non-HTTPS access to the ALM Application Server. In the **jetty.xml** file, locate the following section and comment it out by placing **<!--** at the beginning of the section, and **-->** at the end.

Note: It is possible that this section in your **jetty.xml** file is slightly different.

```
<!--  
<Call name="addConnector">  
  <Arg>  
    <New class="org.eclipse.jetty.server.ServerConnector">  
      <Arg name="server"><Ref refid="Server" /></Arg>  
      <Arg name="factories">  
        <Array type="org.eclipse.jetty.server.ConnectionFactory">  
          <Item>  
            <New class="org.eclipse.jetty.server.HttpConnectionFactory">  
              <Arg name="config"><Ref refid="httpConfig" /></Arg>  
            </New>  
          </Item>  
        </Array>  
      </Arg>  
    </New>  
  </Call>  
</!--
```

```
        </Arg>
        <Set name="host"><Property name="jetty.host" /></Set>
        <Set name="port"><Property name="jetty.port" default="8080"/></Set>
        <Set name="idleTimeout"><Property name="http.timeout" default="30000"/></Set>

    </New>
</Arg>
</Call>
-->
```

14. Save the **jetty.xml** file.
15. Restart the ALM Service and ensure that the non-secure URL (such as **http://<ALM server>:8080/qcbin**) does not open.

Use TLS 1.2 instead TLS 1.1, TLS 1.0 or SSLv3

To use TLSv1.2, you need to configure the **jetty-ssl.xml** file, and modify the database connection string.

Configure the **jetty-ssl.xml** file

1. Verify that all users have logged out of ALM projects and stop the ALM Service as follows: In the system tray, right click the ALM icon and choose **Stop Application Lifecycle Management**.
2. Navigate to the **<ALM Deployment Folder>\server\conf** directory and make a backup of the **jetty-ssl.xml** file.
3. Open the **jetty-ssl.xml** file.
4. Uncomment the **ExcludeProtocols** section in the file:

```
<Set name="ExcludeProtocols">
    <Array type="java.lang.String">
        <Item>SSLv3</Item>
        <Item>TLSv1</Item>
        <Item>TLSv1.1</Item>
    </Array>
</Set>
```

Note: You can choose your own set of supported protocols by adding or removing items in this list.

5. Save the **jetty.xml** file.
6. Start the ALM Service.

Modify the database connection string

For details on configuring the database connection string to work with TLS 1.2, see this [KB article](#).

Oracle databases: Place the Oracle Wallet file in a location on the ALM server where the ALM Service user has read permissions.

Redirect http to https

This procedure describes how to redirect http to https. You need to redirect to https when accessing the ALM server directly, and not through a front-end server.

1. Edit **<ALM deployment folder>\webapps\qcbins\WEB-INF\web.xml**, and add the following at the end (before `</web-app>`):

```
<security-constraint>
  <web-resource-collection>
    <web-resource-name>Everything</web-resource-name>
    <url-pattern>/*</url-pattern>
  </web-resource-collection>
  <user-data-constraint>
    <transport-guarantee>CONFIDENTIAL</transport-guarantee>
  </user-data-constraint>
</security-constraint>
```

2. Restart ALM.
3. Access ALM via **http://<ALM>:8080/qcbins**.
You should be redirected to **https://<ALM>:8443/qcbins**. If not, ensure that **SecurePort** in **jetty.xml** matches your secure port.

Set up encrypted communication with cookies

1. In Site Administration, click the **Site Configuration** tab.
2. click the **New Parameter** button. Enter the following information:

Parameter	Value
SSO_SECURE_ONLY_COOKIE	Y

Configuring Secure Database Access

This section describes how to configure a secure connection, such as Secure Socket Layer (SSL), from the ALM server to the database server. If your database server requires an encrypted channel, you must follow these instructions.

Before beginning, determine the following:

- For SQL databases:
 - Is the certificate signed by a trusted Certificate Authority (CA)? If not, obtain the certificate chain of authority that issued your SQL server certificate and import it into the ALM server truststore using the procedure to configure trust on the ALM server in ["Configuring Secure Access on Windows Systems" on page 116](#).
 - Is host name validation required? If yes, what is the host name, including the domain name, in the server certificate?
- For Oracle databases:
 - Is SSL configured? If yes:
 - Place the Oracle Wallet file in a location on the ALM server where the ALM Service user has read permissions.
 - Is host name validation required? If yes, what is the host name, including the domain name, in the server certificate?
 - Is the port different than what it was before?
 - If SSL is not configured:
 - Is native Data Integrity configured?
 - Is native Encryption configured? If yes, what is the algorithm? Is the key larger than 128 bits?

To configure a secure database connection for a previously unsecured database:

1. For SQL databases, follow the procedure to configure trust on the ALM server in ["Configuring Secure Access on Windows Systems" on page 116](#).
2. Configure the Site Administration schema connection.

This section is relevant if the database server that was configured for a secure connection contains your Site Administration schema. If you have a separate database server for your projects and you only want a secure connection to that database, skip this section.

- a. Stop the ALM server.
- b. Run the ALM Server Configuration wizard:

```
Win > Run > "%ALM_INSTALL_PATH%\run_configuration.bat" gui false
```

- c. In the Database Server step, enter the database administrator password and click **Next**.
- d. Select the **Connection String** option under **Database Connection**:

- i. For SSL, add **;EncryptionMethod=SSL** to the end of the value. For example:

```
jdbc:mercury:sqlserver://<database server>\SQL2012SSL:1499;EncryptionMethod=SSL.
```

- ii. For Oracle, add **;TrustStore=[path to Oracle Wallet];TrustStorePassword=[password to Oracle wallet]** to the end of the value. For example:

```
jdbc:mercury:oracle://<database server>;servicename=palms11210;EncryptionMethod=SSL;TrustStore=c:/ewallet.p12;TrustStorePassword=client12
```

- iii. For Oracle native Data Integrity, add **;DataIntegrityLevel=accepted** or **;DataIntegrityLevel=required** to the end of the value, and replace the java security policy files in `..\java\jre\lib\security\`.
- iv. For Oracle native Encryption, add **;EncryptionLevel=accepted** or **;EncryptionLevel=required** to the end of the value, and, for encryption algorithms with keys longer than 128 bits, replace the java security policy files in `..\java\jre\lib\security\`.

Note: For details on java security policy files, see <https://www.oracle.com/technetwork/java/javase/downloads/jce8-download-2133166.html>.

- e. Click **Next**. In the Site Administration Database Schema step:
 - i. Select **Connect to existing schema/ second node** under **Selected Action**.
 - ii. Enter your Site Administration schema name and password.
 - f. Continue until the end of the wizard and start the ALM Service.
3. Configure the database servers:
- a. Log in to Site Administration.
 - b. In the Database Servers tab, do the following for each database that was configured for a secure connection:
 - i. Select the database and click **Edit**.
 - ii. Change the connection string:
 - A. For SSL, add **;EncryptionMethod=SSL** to the end of the value.
 - B. For Oracle, add **;TrustStore=[path to Oracle Wallet];TrustStorePassword=[password to Oracle wallet]** to the end of the value.
 - C. For Oracle native Data Integrity, add **;DataIntegrityLevel=accepted** or **;DataIntegrityLevel=required** to the end of the value, and replace the java security policy files in `..\java\jre\lib\security\`.

- D. For Oracle native Encryption, add **;EncryptionLevel=accepted** or **;EncryptionLevel=required** to the end of the value, and, for encryption algorithms with keys longer than 128 bits, replace the java security policy files in `..\java\jre\lib\security\`.

Note: For details on java security policy files, see <https://www.oracle.com/technetwork/java/javase/downloads/jce8-download-2133166.html>.

- iii. Click **Test Connection** to check that the connection works.
 - iv. Click **OK**.
4. Configure LAB_PROJECT, if LAB_PROJECT is on a secure connection database:
- a. Log in to Site Administration.
 - b. Go to the Site Projects tab, select LAB_PROJECT, and click **Edit** :
 - i. Click **OK** for any error messages that appear.
 - ii. The Connection String Editor (MS-SQL/Oracle) dialog box opens. Change the connection string:
 - A. For SSL, add **;EncryptionMethod=SSL** to the end of the value.
 - B. For Oracle, add **;TrustStore=[path to Oracle Wallet];TrustStorePassword=[password to Oracle wallet]** to the end of the value.
 - C. For Oracle native Data Integrity, add **;DataIntegrityLevel=accepted** or **;DataIntegrityLevel=required** to the end of the value, and replace the java security policy files in `..\java\jre\lib\security\`.
 - D. For Oracle native Encryption, add **;EncryptionLevel=accepted** or **;EncryptionLevel=required** to the end of the value, and, for encryption algorithms with keys longer than 128 bits, replace the java security policy files in `..\java\jre\lib\security\`.

Note: For details on java security policy files, see <https://www.oracle.com/technetwork/java/javase/downloads/jce8-download-2133166.html>.

- iii. Click **Test Connection** to check that the connection works.
 - iv. Click **OK**.
 - v. Click **Activate Project**.
5. Configure all site projects on a secure connection database:
- a. Log in to Site Administration.
 - b. Go to the Site Projects tab, select the project and click **Edit**:

- i. Click **OK** for any error messages that appear.
- ii. The Connection String Editor (MS-SQL/Oracle) dialog box opens. Change the connection string:
 - A. For SSL, add **;EncryptionMethod=SSL** to the end of the value.
 - B. For Oracle, add **;TrustStore=[path to Oracle Wallet];TrustStorePassword=[password to Oracle wallet]** to the end of the value.
 - C. For Oracle native Data Integrity, add **;DataIntegrityLevel=accepted** or **;DataIntegrityLevel=required** to the end of the value, and replace the java security policy files in `..\java\jre\lib\security\`.
 - D. For Oracle native Encryption, add **;EncryptionLevel=accepted** or **;EncryptionLevel=required** to the end of the value, and, for encryption algorithms with keys longer than 128 bits, replace the java security policy files in `..\java\jre\lib\security\`.

Note: For details on java security policy files, see <https://www.oracle.com/technetwork/java/javase/downloads/jce8-download-2133166.html>.

- iii. Click **Test Connection** to check that the connection works.
 - iv. Click **OK**.
 - v. Click **Activate Project**.
- c. Perform the above step for all projects on a secure connection database.
- If you have a large number of projects to update, you can run the following SQL update query on the site administration schema:
- i. In MS SQL Server: `UPDATE td.PROJECTS SET DB_CONNSTR_FORMAT = 'your new connection string'`
 - ii. In Oracle: `UPDATE [your sa schema name].PROJECTS SET DB_CONNSTR_FORMAT = 'your new connection string'`
 - iii. To limit the projects you update, add a where clause to the query, such as `WHERE PROJECT_NAME IN ('project1', 'project2')` or `WHERE DOMAIN_NAME IN ('domain1', 'domain2')`
 - iv. After executing the query, restart the ALM service.

To configure a secure database connection for a new ALM installation:

1. For SQL databases, follow the procedure to configure trust on the ALM server in ["Configuring Secure Access on Windows Systems" on page 116](#).
2. During the installing ALM, in the Database Server step, select the Connection String option and value the field as follows:

- a. For MS SQL server use this format:
jdbc:mercury:sqlserver://sql2014.test.net:1433;EncryptionMethod=SSL.
If TLSv1.2 is required use this format:
jdbc:mercury:sqlserver://sql2014.test.net:1433;EncryptionMethod=SSL;CryptoProtocolVersion=TLSv1.2.
- b. For Oracle, add **;TrustStore=[path to Oracle Wallet];TrustStorePassword=[password to Oracle wallet]** to the end of the value.
- c. For Oracle native Data Integrity, add **;DataIntegrityLevel=accepted** or **;DataIntegrityLevel=required** to the end of the value, and replace the java security policy files in `..\java\jre\lib\security\`.
- d. For Oracle native Encryption, add **;EncryptionLevel=accepted** or **;EncryptionLevel=required** to the end of the value, and, for encryption algorithms with keys longer than 128 bits, replace the java security policy files in `..\java\jre\lib\security\`.

Note: For details on java security policy files, see <https://www.oracle.com/technetwork/java/javase/downloads/jce8-download-2133166.html>.

3. Complete the ALM installation.

Application Server Management Tools

Since the ALM Application Server is Java-based, we recommend the following Java tools to enable you to effectively manage ALM:

Tool	Address
jconsole	http://java.sun.com/developer/technicalArticles/J2SE/jconsole.html
jstack	http://download.oracle.com/javase/1.5.0/docs/tooldocs/share/jstack.html
jmap	http://download.oracle.com/javase/1.5.0/docs/tooldocs/share/jmap.html
jvisualvm	http://download.oracle.com/javase/6/docs/technotes/tools/share/jvisualvm.html

Note: **Jvisualvm** is an all-in-one tool that was added in Java 1.6. However **jvisualvm** is very memory and CPU intensive, so you may find that another tool is more useful.

Chapter 19: Customizing System Files

You can customize various aspects of ALM by creating or configuring system files.

This chapter includes

- [Customizing Site Administration](#) 127
- [Customizing Menus](#) 128
- [Customizing the ALM System Tray Icon](#) 130
- [Customizing the ALM Login Window](#) 131

Customizing Site Administration

Customization of the Site Administration repository and the **qcbn** application, such as editing **.xsl** mail stylesheets or creating custom test types, must be performed in the ALM deployment directory. After customizing any of the files in the deployment directory, you must redeploy ALM.



Caution: You must not modify, add, or delete files in the ALM installation directory.

This section includes:

- [Customizing the Site Administration Repository](#) 127
- [Customizing the qcbn Application](#) 128

Customizing the Site Administration Repository

Perform the following procedure to customize the Site Administration repository.

1. On the machine on which ALM is installed, open a file browser, and navigate to **<ALM installation path>\ALM\data\sa**.
2. Open another file browser, and navigate to **<ALM repository path>\customerData**.
3. In the installation directory, navigate to the file that you want to customize.
4. In the repository directory, under **customerData**, create the same folder structure that contains the file in the installation directory.
5. Copy the file from the installation directory and paste the file in the appropriate folder in the repository directory.
6. Edit the file in the repository directory.
7. Run the Server Deployment Wizard from **Start > Micro Focus ALM Server > Server Deployment Wizard** or **<installation path>\bin\run_server_deploy_tool.bat**.

Customizing the qcbn Application

Perform the following procedure to customize the qcbn application.

1. On the machine on which ALM is installed, open a file browser, and navigate to **<ALM installation path>\ALM\application\20qcbn.war**.
2. Open another file browser, and navigate to **<ALM deployment path>\application\20qcbn.war**.
3. In the installation directory, navigate to the file that you want to customize.
4. In the deployment directory, under **20qcbn.war** create the same folder structure that contains the file in the installation directory.
5. Copy the file from the installation directory and paste the file in the appropriate folder in the deployment directory.
6. Edit the file in the deployment directory.
7. Run the Server Deployment Wizard from **Start > Micro Focus ALM Server > Server Deployment Wizard** or **<installation path>\bin\run_server_deploy_tool.bat**.
8. Repeat the procedure on each cluster node.

Customizing Menus

You can customize the ALM Tools and Help menus by modifying the **ALM-Client.exe.config** file on the machine on which ALM is installed.

Note: You can only perform **.cab** related actions on a Windows machine. To customize menus, copy the relevant files to a Windows machine and edit the files as necessary. Then copy the files back to the machine on which ALM is installed and proceed as instructed.

To customize ALM:

1. On the machine on which ALM is installed, extract the **ALM-Client.exe.config** file from **Client.cab**. This file is located in: **<ALM deployment path>\deployment\20qcbn.war\Install**.
2. Open the **ALM-Client.exe.config** file (this is in **.xml** format).
3. In the **Tools** section of the file, you can add new items to the Tools menu.

The following is the syntax of an entry in the **Tools** line:

```
<TDFrame
  Tools="<Tool_Name>,{<Tool_ID>}"
  Workflow="{<Workflow_ID>}"
```



```
Parameters="<parameters>"  
/>
```

4. To change, delete, or rearrange the list of items in the Help menu, change the default names, IDs, and URLs listed in the **OnlineHelpItem** line. The following is the syntax of an entry in the **OnlineHelpItem** line:

```
<OnlineHelpItem  
ID="<Help_ID>"  
Name="<Help_Name>"  
Url="<Help_URL>"
```

To create a separator line between two items in the Help menu, use the following syntax:

```
<OnlineHelpItem  
ID="<Help_ID>"  
Name="<Help_Name>"  
Url="<Help_URL>"  
IsFirstInGroup="true" />
```

Note: The first two menu items in the Help menu, **Help on this page** and **ALM Help**, and the last Help menu item, **About Application Lifecycle Management Software**, cannot be moved or changed. They do not have corresponding entries in the **QualityCenter.exe.config** file. The above step only affects the menu items between them.

5. Unzip the **Client.cab** file to a temporary folder named **Client** which must be under the temp folder. For example, C:\temp\Client.
6. Replace the **ALM-Client.exe.config** file with the modified file.
7. Store the temporary folder on a logical drive, for example X, by running the following command:

```
subst [X]: <temp folder>
```

For example: **subst X: C:\temp**

8. Create a new **Client.cab** file with the following command:

```
cabarc -r -p -P Client\ -s 6144 N <temp folder>\Client.cab X:\Client\*.*
```

Note: To use this command you must first download cabsdk.exe (the Cabinet Software Development Kit) from the Microsoft Download Center.

9. Add a class 3 digital signature to the new **Client.cab** file.

Note: The digital signature must be a signature of a trusted provider.

10. Under **<ALM deployment path>\application\20qcbin.war**, create a new Installation folder, if it does not already exist.
11. Save the new cab file under the Installation folder.
12. Run the Server Deployment Wizard from **Start > Micro Focus ALM Server > Server Deployment Wizard** or **<installation path>\bin\run_server_deploy_tool.bat**.
13. Repeat the procedure on each cluster node.

Customizing the ALM System Tray Icon

The ALM system tray icon indicates the current status of ALM. It also indicates the current action that ALM is performing.

You can customize the behavior of the icon by modifying the **trayConfigFile.properties** file.

To customize the system tray icon:

1. Navigate to the following directory: **<ALM deployment folder>\server\conf**
2. Open the **trayConfigFile.properties** file.
3. Change the following properties as necessary:
 - **pollingintervalMillis**. Defines, in milliseconds, how often the ALM system tray icon checks the status (started or stopped) of ALM. The default value is 5,000.
 - **logDebugMode**. Defines whether debugging information is included in the system tray log. The default value is false.
 - **timeoutintervalMillis**. Defines, in milliseconds, the maximum amount of time ALM takes to change the status of ALM when you right-click the icon and choose Start/Stop ALM Server. If ALM is not able to perform the action in the allotted time the status changes to Error. The default value is 180,000.

Note: If the icon does not appear in the system tray, choose **Start > Programs > Application Lifecycle Management > ALM Tray icon**.

Customizing the ALM Login Window

You can customize the ALM Login window, so that you can share any special announcements or important events with users that are using the same ALM server. When working in Windows, you can also replace the existing background photo displayed in the ALM Login window. Users can view these changes from their ALM Desktop Client machines.

Display a message in the the Login window

This section describes how to display a message in the Login window.

1. On the ALM server, navigate to the following directory:

Windows	<Deployment path>\webapps\qcbins\Help\ (By default: C:\ProgramData\HP\ALM\webapps\qcbins\Help\)
Linux	<Deployment path>/webapps/qcbins/Help/ (By default: /var/opt/ALM/webapps/qcbins/Help/)

2. Create the **customization** folder.
3. In the customization folder, create the following file: **customizationInfo.htm**. The file name is case-sensitive.
4. Edit the **customizationInfo.htm** file and add content.
5. To view the content, open the ALM Login window from the ALM Desktop Client machine.

Customize the background photo in the Login window

This section describes how to replace the background photo displayed in the Login window.

Note:

- We recommend using a square-shaped photo. The minimum is 900 pixels wide by 900 pixels height.
- If it takes too long for the customized background photo to download, then the default background is displayed.

1. On the ALM server, navigate to the following directory:

Windows	<Deployment path>\webapps\qcbins\images (By default: C:\ProgramData\HP\ALM\webapps\qcbins\images)
Linux	<Deployment path>/webapps/qcbins/images/ (By default: /var/opt/ALM/webapps/qcbins/images/)

2. Copy the customized background picture to this folder and rename it to **login-bg-cust.jpg**.
The file name is case-sensitive.

Chapter 20: Uninstalling ALM

You can uninstall ALM from the server machine. When uninstalling ALM, projects are not deleted. You can also uninstall ALM client components from a client machine that has been used to access ALM.

This section includes:

- [Uninstalling ALM from Windows Systems](#) 133
- [Removing ALM Client Components from a Client Machine](#) 133

Uninstalling ALM from Windows Systems

This section describes how to uninstall ALM from your Windows server machine.

- Select **Start > All Programs > Application Lifecycle Management**. Run **Uninstall Application Lifecycle Management**.

Alternatively, navigate to the installation directory (the default is **C:\Program Files\Micro Focus\ALM\ALM**). Run the **Uninstall_ALM.exe** file.

- (Optional) To remove all traces of ALM from the machine, delete all remaining files in the installation directory as well as the deployment path. Also delete the **\..\ALM** folders in the **c:\ProgramData** directory and their files

Note: When you remove the repository directory, all projects' repositories are also removed. The database remains unless it is specifically deleted.

Removing ALM Client Components from a Client Machine

When you run ALM on your client computer, client components are downloaded to your client machine. You can use the ALM Client Cleanup add-in to remove all ALM client components, including files and registry keys. For details and to download the add-in, see the [ALM Client Cleanup Add-in](#) page on Marketplace.

If the client machine is used to access ALM after the cleanup add-in has been run, all necessary components are downloaded again from the ALM server.

Part 6: Project Upgrade

Chapter 21: Upgrading Projects

Upgrading Projects describes the post-installation steps necessary for upgrading projects from previous versions of ALM/Quality center to ALM 15.0 .

To update multiple projects concurrently, use ALM Robot. For details, refer to the *Application Lifecycle Management Administrator Guide*.

This chapter includes:


- [Deactivate and Remove Projects from Existing ALM/Quality Center Installation](#) 137
- [Copy Project Database Schemas to the New Database Server Machine](#) 138
- [Restore ALM Projects in New Site Administration Database Schema](#) 138
- [Upgrade Projects](#) 140

Deactivate and Remove Projects from Existing ALM/Quality Center Installation

Note: Back up the database and repository after deactivating projects.


In the previous ALM/Quality Center installation, deactivate and remove projects from Site Administration. You do not have to deactivate and remove all projects at once. You can perform this action on a per-project upgrade basis.

To deactivate a project:

1. In Site Administration, click the **Site Projects** tab.
2. In the Projects list, select a project.
3. Click the **Deactivate Project** or **Deactivate Template** button . A message box indicates that all connected users will be disconnected.
4. Click **OK** to confirm. The project is deactivated and the project icon is changed in the Projects list.

To remove a project from the Projects list:

Note: If the project is currently in use, it cannot be removed. For information about how to manually remove a project, see this [KB article](#).

1. In Site Administration, click the **Site Projects** tab.
2. In the Projects list, select a project.
3. Click the **Remove Project** or **Remove Template** button .

4. Click **OK** to confirm. If the project is still active, you are prompted to deactivate it.
5. Click **OK**.

Copy Project Database Schemas to the New Database Server Machine

Note: Perform this step only if your new ALM system uses a new database server or new instance of the previous database server.

To restore removed projects in the new database server machine, copy the project schemas from the database server that was used in the previous ALM system to the database server that will be used in the new ALM system.

This enables you to restore the projects in Site Administration in the new ALM installation.

Perform the required steps for backing up, removing, and restoring databases for your database type. For assistance contact your database administrator.

Note: The database user must have the same permissions as the user installing ALM.

Restore ALM Projects in New Site Administration Database Schema

To view projects in Site Administration, on the machine on which the new version of ALM has been installed, restore projects you removed above as follows:

Project restore considerations

- Before restoring the project, make sure that the database where the project resides exists in the **DB Servers** tab in Site Administration on your ALM server. The ALM server needs to access the contents of the restored project from the project's database.
- When restoring a project, you should select the **dbid.xml** file located in the project repository. This ensures that the project retains its original ID. If a project does not have its original ID, the following cross project features may not function properly: cross project customization, importing and synchronizing libraries, and cross project graphs.
- You must first restore and upgrade any template projects before restoring and upgrading other projects. If the template project and its linked projects are in different databases, ensure that the template project's database is accessible when restoring any linked projects.

To restore access to an ALM project:


1. Navigate to the project's **dbid.xml** file. The file is located in the project repository's **qc** sub-directory.

For details on the project structure, refer to the Understanding the Project Structure section in the *Micro Focus Application Lifecycle Management Administrator Guide*.

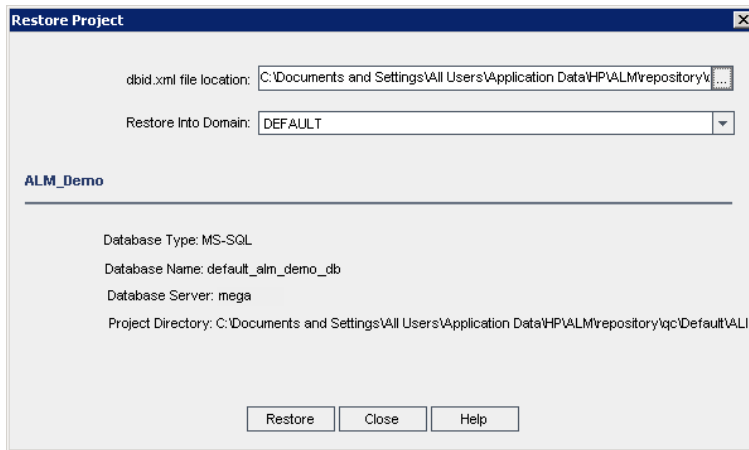
2. Open the file and update the following values:

Note:

- To identify the values of **DB_CONNSTR_FORMAT** and **DB_USER_PASS**, it is recommended to create a new, empty project in ALM Site Administration, open the project's **dbid.xml** file, and copy these values. You can later delete the empty project.
- Make sure not to change the original value for **PR_SMART_REPOSITORY_ENABLED**.
- If you are restoring **LAB_PROJECT** or LoadRunner Enterprise projects as part of the upgrade process, make sure not to edit the **PROJECT_UID** value. You must restore these projects with their original **PROJECT_UID** value to maintain the links between **LAB_PROJECT** and its associated LoadRunner Enterprise projects. This is important for shared data, such as timeslots, runs, and so on.

- **DB_NAME**. Update to the database schema name as it appears in the database server.
 - **DB_CONNSTR_FORMAT**. Update to the value of the empty project created in ALM. See the note for details.
 - **DBSERVER_NAME**. This is the name of the database server as defined in the **DB Servers** tab in Site Administration.
 - **DB_USER_PASS**. Update if the encrypted passphrase differs between the previous installation and ALM.
 - **PHYSICAL_DIRECTORY**. Update to the new location of the project repository. It must contain a backslash (\) at the end of the path.
3. Save the file.
 4. In Site Administration, click the **Site Projects** tab.
 5. Click the **Restore Project** or **Restore Template** button . The Restore Project dialog box opens.
 6. To locate the file that includes the project that you want to restore, click the browse button to the right of the **dbid.xml file location** box. The Open File dialog box opens.
 7. Locate the project's **dbid.xml** file.

8. Select the **dbid.xml** file and click **Open**. The Restore Project dialog box opens and displays the database type, name, server, and the directory path of the project.



9. In the **Restore Into Domain** box, select the domain in which you want the restored project to be located.
10. Click **Restore**.
11. If your database server does not have the text search feature enabled, a message box opens. You can enable the text search feature before or after this process completes.
 - Click **Yes** to continue this process. After the process completes, you can enable the text search feature.
 - Click **No** to stop this process. Enable the text search feature and then restart the process.

For details on enabling the text search feature, refer to the *Micro Focus Application Lifecycle Management Administrator Guide*.
12. When the restore process completes, click **OK**.
13. Click **Close** to close the Restore Project dialog box and view the restored project in the Projects list.

Upgrade Projects

Once a project appears in the ALM 15.0 Site Administration project list, you can proceed with the actual project upgrade. You can upgrade projects individually or on the domain level, which upgrades all projects contained in the domain. You must first upgrade any template projects before upgrading other projects.

This section includes:

- [About Upgrading Domains and Projects](#) 141
- [Upgrading a Project](#) 141
- [Upgrading a Domain](#) 143

About Upgrading Domains and Projects

By default, the upgrade process runs in non-silent mode. When running the process in non-silent mode, ALM may pause and prompt you for input when an error occurs. Instead, you can choose to run the process in silent mode. When running the process in silent mode, ALM aborts the process without prompting you for input.

After the project has been upgraded, you can no longer use the project with a previous version of ALM/Quality Center.



Note:


- During the upgrade process, the project directory must be accessible. For example, if your project directory is located on a file server, ensure that the server is running and accessible.
- During the upgrade process, no database maintenance jobs can be run. Running database maintenance jobs can cause the upgrade to fail and can corrupt projects.
- If a project has extensions enabled, the availability of these extensions on the new server must be verified before upgrading. If any extension is not available on the new server, the upgrade fails.
- You must first upgrade a template project before upgrading any of its linked projects. If the template project and its linked projects are in different databases, ensure that the template project's database is accessible when updating any linked projects.
- **Version Control:** Version control enabled projects cannot be upgraded while there are checked out entities. All entities must be checked in to the corresponding version of Quality Center or ALM. To determine if there are checked out entities, see this [KB article](#).

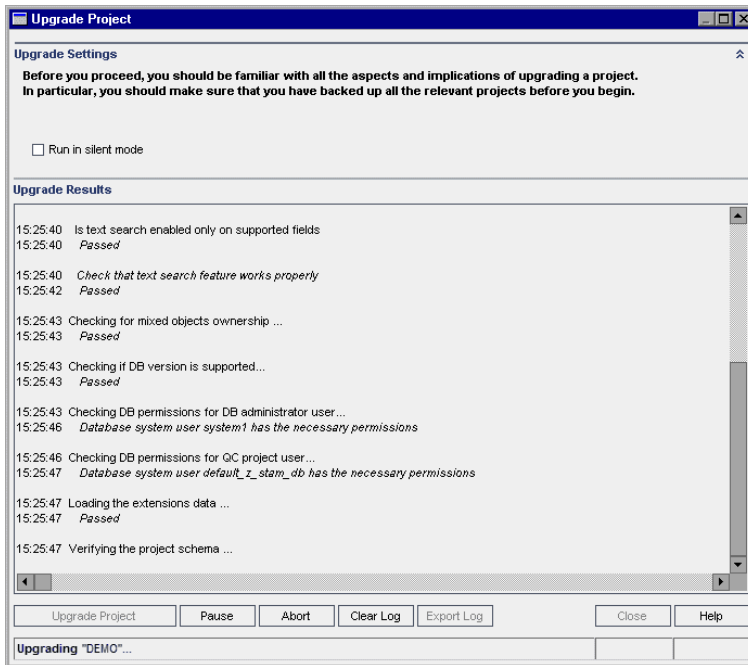
Upgrading a Project

This section describes how to upgrade a single project.

To upgrade a project:

1. In Site Administration, click the **Site Projects** tab.
2. In the Projects list, select a project.

3. Click the **Maintain Project**  button and select **Upgrade Project**. The Upgrade Project dialog box opens.



4. To run the upgrade process without any user interaction, select **Run in silent mode**.
5. To start the upgrade process, click the **Upgrade Project** button. If the project is active, you are prompted to deactivate it. For details, refer to the *Micro Focus Application Lifecycle Management Administrator Guide*.

If a database error occurs while running the process in non-silent mode, a message box opens. Click the **Abort** or **Retry** buttons, based on whether you can correct the problem described in the message box.


If the upgrade fails, ALM displays an error message with reasons for the failure and refers you to the log file. You must restore the backed up project before you try to upgrade again. For details, see "[Restoring Backed Up Projects and Repositories](#)" on page 74.

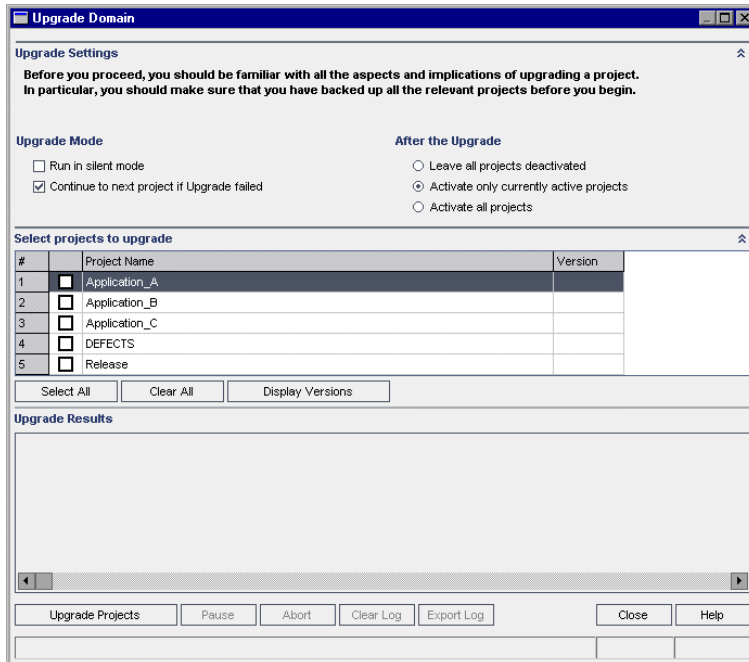
6. To pause the upgrade process, click the **Pause** button. To continue, click the **Resume** button.
7. To abort the upgrade process, click the **Abort** button. Click **Yes** to confirm.
8. To save the messages displayed in the Upgrade Results pane to a text file, click the **Export Log** button. In the Export Log to File dialog box, choose a location and type a name for the file. Click **Save**.
9. To clear the messages displayed in the Upgrade Results pane, click the **Clear Log** button.
10. Click **Close** to close the Upgrade Project dialog box.
11. Reactivate the project.

Upgrading a Domain

This section describes how to upgrade all projects in a domain.

To upgrade a domain:

1. In Site Administration, click the **Site Projects** tab.
2. In the Projects list, select a domain.
3. Click the **Maintain Domain**  button and select **Upgrade Domain**. The Upgrade Domain dialog box opens.



4. In the **Upgrade Settings** area, under **Upgrade Mode**, you can select the following options:
 - **Run in Silent Mode.** Runs the process without any user interaction.
 - **Continue to next project if upgrade failed.** Proceeds to the next project if the upgrade process fails. This is the default option.
5. In the **Upgrade Settings** area, under **After the Upgrade**, you can select one of the following options:
 - **Leave all projects deactivated.** Leaves all projects deactivated after the upgrade process completes.
 - **Activate only currently active projects.** Reactivates previously-activated projects after the upgrade process completes. This is the default option.
 - **Activate all projects.** Activates all projects after the upgrade process completes.

6. To view the current version numbers of your projects, select the project names, or click **Select All** to view version numbers for all projects. Click the **Display Versions** button.
The project version number is displayed in the **Version** column.
7. To upgrade your projects, select the project names, or click **Select All** to verify all projects. Click the **Upgrade Projects** button.
If a database error occurs while running the process in non-silent mode, a message box opens. Click the **Abort** or **Retry** buttons, based on whether you can correct the problem described in the message box.
If the upgrade fails, ALM displays an error message with reasons for the failure and refers you to the log file. You must restore the backed up projects before you try to upgrade again. For details, see ["Restoring Backed Up Projects and Repositories" on page 74](#).
8. To pause the upgrade process, click the **Pause** button. To continue, click the **Resume** button.
9. To abort the upgrade process, click the **Abort** button. Click **Yes** to confirm.
10. To save the messages displayed in the Upgrade Results pane in a text file, click the **Export Log** button. In the Export Log to File dialog box, choose a location and type a name for the file. Click **Save**.
11. To clear the messages displayed in the Upgrade Results pane, click the **Clear Log** button.
12. Click **Close** to close the Upgrade Domain dialog box.

Chapter 22: Migrating the Project Repository

This chapter describes the process of migrating a Quality Center 10.00 project repository to the optimized repository architecture used in ALM. ALM versions 11.00 and later use a new project repository architecture, that is optimized to allow maximum storage space.

When you upgrade from Quality Center 10.00 to ALM, you must migrate the project repository. You can perform the migration as part of the upgrade from Quality Center 10.00 to ALM 11.52, or after upgrading from ALM 11.52 or later to ALM 15.0 .

For details on ALM Optimized Project Repository, refer to the *Micro Focus Application Lifecycle Management Administrator Guide*.

This chapter includes:

- [About the Repository Migration](#) 145
- [Repository Migration Status Window](#) 146
- [Configure Migration Priority](#) 148

About the Repository Migration

When upgrading projects, the project repository is automatically upgraded to the optimized repository format. This is carried out in two stages:

1. The first stage is performed during the upgrade of the project. In this stage, all files in the repository are scanned, and their names are stored in the project database.
2. After the upgrade is completed, the project is reactivated. The repository files are gradually migrated to the new system. In this stage, the files are moved from their old location to their new location in the optimized repository. Depending on various factors, such as the size of the repository and the network speed, the file migration may take up to several days.

This second phase of the repository migration is carried in the background. Users can work in the project even while it is in progress. New files that you add to a project after upgrade are saved in the new project repository structure.



Note:

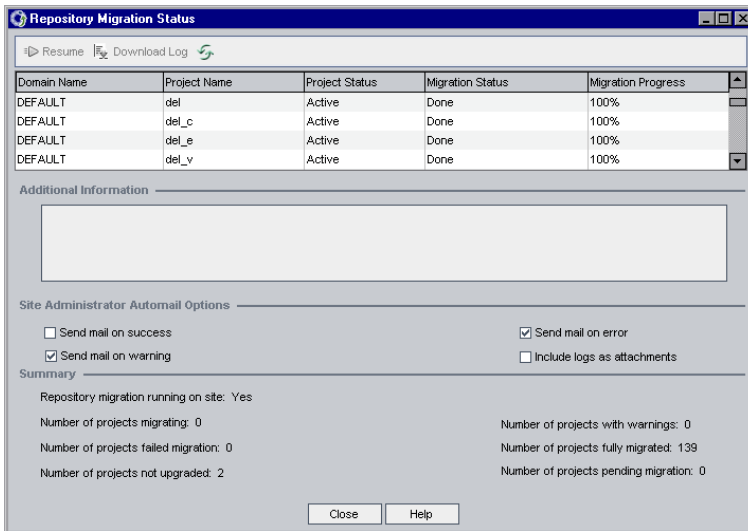
- Until the migration process for a project is complete, you cannot export or copy the project.
- To back up a project before its migration is complete, you must suspend the migration process. For details, see "[Configure Migration Priority](#)" on page 148.

You monitor and troubleshoot the migration progress in the Repository Migration Status window.

In Site Administration, you can track the status of file migration for each project, and configure the speed of performing the migration.

Repository Migration Status Window


This window lists all the site projects and displays the status of their migration to the optimized project repository.



To access	In Site Administration, select Tools > Repository Migration Status .
See also	<ul style="list-style-type: none"> • "Migrating the Project Repository" on the previous page • "Configure Migration Priority" on page 148

User interface elements are described below:

UI Element	Description
	Instructs ALM to resume the migration of the selected project. If an error or warning was detected during the migration of the selected project, fix the problem as described in the Additional Information field, and click Resume .
	Downloads a log of the migration events associated with the selected project.

UI Element	Description
	<p>Refresh. Refreshes the display with the most up-to-date information.</p> <p>Note: The grid updates automatically after the migration of every 1000 files.</p>
Domain Name	The domain to which the selected project belongs.
Project Name	The name of the selected project.
Project Status	<p>Indicates the selected project's status in Site Administration. For example, Active or Deactivated.</p> <p>Note: Deactivating a project does not affect its repository migration.</p>
Migration Status	<p>The migration status of a project can be one of the following:</p> <ul style="list-style-type: none"> • None. Project is not upgraded to ALM 15.0 , and will not be migrated. • Pending. File migration is pending. • Migrating. File migration is in progress. • Done. File migration is complete. • Error. An error occurred during file migration, and migration could not be completed. See the cause of the error in the Additional Information panel. Fix the error, and click Resume. • Warning. A warning occurred during file migration. <p>For details of the warning, and the actions you must take to resolve the problem, download the log files listed in the Additional Information panel. Resolve the problems as necessary, and click Resume to complete the migration.</p> <p>The reason for a warning is files in the old repository structure that must be handled manually. Handling these files is the last step before completing the migration.</p>
Migration Progress	The number of project files migrated to the new repository, as a percentage of the total number of project files.
Additional Information	If a problem was detected, displays the cause of the problem, and links to log files. The log files describe the actions you must take to resolve the problem.

UI Element	Description
Site Administrator Automail Options	<p>ALM sends automail to Site Administrators upon events connected to repository migration. Select the following options:</p> <ul style="list-style-type: none">• Send mail on success. Sends mail when the migration of a project repository completes successfully.• Send mail on warning. Sends mail when a warning is detected during the migration of a project repository.• Send mail on error. Sends mail when an error is detected during the migration of a project repository.• Include logs as attachments. Attaches detailed log files to automail messages. <p>The default is to send mail when warnings or errors are detected, without attaching logs.</p>
Summary	Summary information of the migration status of all site projects.

Configure Migration Priority

While the migration process does not interfere with your work on projects, the process may affect system performance as a whole. Use the following site configuration parameters to control the amount of system resources used by the migration process.

- **REPOSITORY_MIGRATION_JOB_PRIORITY.** Determines the speed at which files are copied from the old to the new project repository. For details, refer to the *Micro Focus Application Lifecycle Management Administrator Guide*.
- **SUSPEND_REPOSITORY_MIGRATION.** Stops the repository migration on the entire site. Use this parameter temporarily, and only in special circumstances. For example, if you suspect that the migration process disrupts your system. For details, refer to the *Micro Focus Application Lifecycle Management Administrator Guide*.

Additional parameters are available for configuring the resources allocated to the migration process. For details, see this [KB article](#).

Consider the following when configuring the migration priority:

- Allocating more resources to the migration process may slow down other processes.
- Allocating less resources extends the time in which the process is completed.
- Projects that are pending migration or in the process of migration cannot be exported or copied.

Part 7: Appendix

Appendix A: Troubleshooting the ALM Installation

This appendix contains troubleshooting suggestions for issues relating to the ALM installation.

This appendix includes:

- [Disabling Validation Checks for the Installation Wizard](#) 151
- [Checking the Installation and Configuration Log Files](#) 155
- [ALM Installation Already Exists](#) 156
- [Database Validator Fails](#) 156
- [Monitoring ALM Server Fails](#) 157

Disabling Validation Checks for the Installation Wizard

The ALM Installation Wizard automatically performs validation checks to verify that particular system configurations requirements are met. If the ALM configuration does not complete due to a failed validation, you can fix the problem or disable selected validation checks, and rerun the installation.

Note:

- You should disable validation checks only if you decide to take responsibility for the ALM server installation.
- To resolve failures that occur during the ALM Installation Wizard, see ["Checking the Installation and Configuration Log Files" on page 155](#), or ["ALM Installation Already Exists" on page 1](#).
- For troubleshooting tips on database validations, see ["Database Validator Fails" on page 156](#).

To disable configuration validators and rerun the ALM Installation Wizard in Windows silent installation:

1. In the ALM installation directory, locate the **validations.xml** file, which is near the installation executable (**ALM_installer.bin**).
2. Edit the **validations.xml** file by changing the validation value from **true** to **false** as required. Following is an example of the file with all configuration validators active.

```
<validations>  
  <os enabled="true" />
```

```

        <memory enabled="true" threshold="8" />
        <installation_disk_space enabled="true" threshold="8" />
        <sa-schema enabled="true" />
        <db enabled="true" />
        <mail enabled="true" />
        <license-key enabled="true" />
        <repository enabled="true" />
        <sa-user enabled="true" />
        <security enabled="true" />
        <alm-services enabled="true" />
        <web-server enabled="true" />
    </validations>
    
```

3. Save the file and rerun the installation.

Configuration Validators

Validator	Checks	To Disable
os	Checks that the operating system is supported. <div style="border: 1px solid #ccc; background-color: #e6f2e6; padding: 5px; margin-top: 10px;"> Note: For the most up-to-date supported environments, see http://admhelp.microfocus.com/alm/specs/alm-qc-system-requirements.htm. </div>	<os enabled="false" />
memory	Checks that the customer machine has at least x GB of memory (x is defined by the threshold value, the default is 8 GB).	<memory enabled="false" />
installation_disk_space	Checks that the installation location has at least x GB of free disk space (x is defined by the threshold value, the default is 8 GB). <div style="border: 1px solid #ccc; background-color: #e6f2e6; padding: 5px; margin-top: 10px;"> Note: This validation is related only to the installation location. If the installation fails because of a lack of free space in the temporary folder, changing the threshold value or disabling this validation does not affect the failure. </div>	<installation_disk_space enabled="false" />
sa-schema	Checks Site Administration database settings.	<sa-schema enabled="false" />

Validator	Checks	To Disable
db	Checks database connectivity.	<db enabled="false" >
mail	Checks that the mail server is valid.	<mail enabled="false" >
license-key	Checks the license file key.	<license-key enabled="false" >
repository	Checks that the repository folder is accessible, and has sufficient space.	<repository enabled="false" >
sa-user	Checks site administrator user settings.	<sa-user enabled="false" >
security	Checks encryption passphrases.	<security enabled="false" >
alm-services	Checks Windows service settings.	<alm-services enabled="false" >
web-server	Checks that the HTTP port and web server deployment folder is accessible, and has sufficient space	<web-server enabled="false" >

To disable configuration validators and rerun the ALM Installation Wizard in Windows:

Note: These instructions do not apply when running the Windows silent installation. For Windows silent installation, follow the instructions above.

1. In the ALM installation directory, locate the **validations.xml** file, which is near the installation executable (**ALM_installer.exe**).
2. Edit the **validations.xml** file by changing the validation value from **true** to **false** as required. Following is an example of the file with all configuration validators active.

```
<validations>
  <os enabled="true" />
  <memory enabled="true" threshold="8" />
  <installation_disk_space enabled="true" threshold="8" />
  <sa-schema enabled="true" />
  <db enabled="true" />
  <mail enabled="true" />
  <license-key enabled="true" />
  <repository enabled="true" />
  <sa-user enabled="true" />
  <security enabled="true" />
  <alm-services enabled="true" />
  <web-server enabled="true" />
</validations>
```

3. Only the following configuration validators are used in the Windows installation wizard:

Validator	Checks	To Disable
os	<p>Checks that the operating system is supported.</p> <div style="border: 1px solid green; background-color: #e6f2e6; padding: 5px;"> <p>Note: For the most up-to-date supported environments, see http://admhelp.microfocus.com/alm/specs/alm-qc-system-requirements.htm.</p> </div>	<pre><os enabled="false" /></pre>
memory	<p>Checks that the customer machine has at least x GB of memory (x is defined by the threshold value, the default is 8 GB).</p>	<pre><memory enabled="false" /></pre>
installation_disk_space	<p>Checks that the installation location has at least x GB of free disk space (x is defined by the threshold value, the default is 8 GB).</p> <div style="border: 1px solid green; background-color: #e6f2e6; padding: 5px;"> <p>Note: This validation is related only to the installation location. If the installation fails because of a lack of free space in the temporary folder, changing the threshold value or disabling this validation does not affect the failure.</p> </div>	<pre><installation_ disk_space enabled="false" /></pre>

Validator	Checks	To Disable
db	Checks database connectivity.	<db enabled="false" >

- Save the file and rerun the installation.
- On the Installation Summary page, before clicking **Done**, edit the **run_configuration.bat** file, located under <installation folder>\ALM, to disable validations.

Validator	Checks	To Disable
Existing installation	Checks if an older version of ALM or Quality Center is installed.	-wPreviousInstallationValidator
License file	Checks license file key.	-wLicenseTypeValidator
Security passphrases	Checks encryption passphrases.	-wEncryptionStepValidator
Mail server	Checks that the mail server name is valid.	wMailServerValidator
Database settings	Checks Site Administration database settings.	-wSaSchemaValidator
Site administrator	Checks site administrator user settings.	-wSiteAdminUserValidator
repository folder	Checks that the repository folder is accessible, and has sufficient space.	-wRepositoryValidator

- Save the **run_configuration.bat** file and click **Done** to continue the installation.

Checking the Installation and Configuration Log Files

If you encounter problems installing ALM, check for errors in the following log files:

Windows File Delivery Logs

Log	Path
Install Completed	<installation folder>\ALM\log

Log	Path
Install Failed	on the desktop: Application_Lifecycle_Management_Install_<mm_dd_yyyy_hh_mm_ss>.log

Application Logs

Log	Path
Configuration logs	<ALM deployment folder>\log
Site Administration database schema creation logs	<ALM deployment folder>\log\sa

ALM Installation Already Exists

After uninstalling a previous version of ALM, an error message displays while installing a later version, indicating that ALM already exists.

Perform the following steps:

1. Navigate to the **C:/ProgramData** directory.
2. Locate the the InstallAnywhere global registry file (hidden file), search for **.com.zerog.registry.xml**. Edit the file and remove the sections related to ALM and its components.
3. Locate the **.com.zerog.registry.xml.swp** (hidden file). If the file exists, delete it.

Database Validator Fails

During the ALM Server configuration, the database validator performs the following checks:

- Check that the input parameters are correct.
- Check that the Site Administration database schema name was provided.
- Check whether the same authentication type was used as the one used in the previous installation.

Perform the following steps:

1. Check whether the parameters are correct:
 - Read the error message that displays during installation and try to understand and resolve the problem from the root cause.
 - For further clarifications, check with your database administrator.
 - If no error was found and you are sure that the parameters are correct, disable the DB

parameters validator. For details, see "[Disabling Validation Checks for the Installation Wizard](#)" on page 151.

2. Check that the Site Administration Database Schema name was provided:
 - a. Open a database query tool.
 - b. Make sure the **PROJECTS** table exists in the Site Administration Database Schema. This table does not exist in the project schema.
3. To check the authentication type of a previous installation:
 - a. Navigate to **<ALM installation path>\ALM\application\20qcbn.war\WEB-INF** and open the siteadmin.xml file in a text editor.
 - b. Search for the **native** property. If its value is set to **Y**, Windows authentication was used. Make sure that the new installation uses the same authentication type (Microsoft SQL Server authentication or Windows authentication) as the previous installation.

Monitoring ALM Server Fails

When running one of the Java-based tools to monitor ALM you receive the following message:

"Not enough storage is available to process this command."

This problem is caused because the JVM running the ALM Server is running with a service account.

Choose one of the following solutions, depending on which tool you are running:

- **jmap and jstack.** See the suggestion in the following link:
<http://stackoverflow.com/questions/906620/jstack-and-not-enough-storage-is-available-to-process-this-command>
You will be required to download the pstools tool from the following address:
<http://technet.microsoft.com/en-us/sysinternals/bb897553>
- **jconsole and jvisualvm.** Download the following tool from the following address:
<http://www.iopus.com/guides/srvany.htm>
Also refer to the following Microsoft article: <http://support.microsoft.com/kb/137890>

Appendix B: Upgrade Preparation Troubleshooting

This appendix describes schema and database inconsistencies that the verification process detects. It indicates which problems the repair process can fix automatically, and which you should repair manually. Suggested solutions for repairing each issue are provided.

This appendix includes:

- [Overview](#)159
- [Quick Warning Reference](#)160
- [General Validation](#)164
- [Schema Validation](#)167
- [Data Validation](#)176
- [Changing the Database User Schema](#)180

Overview

The verification process, described in "[Verifying Domains and Projects](#)" on page 66, detects inconsistencies and indicates which problems the repair process can fix automatically, and which you should repair manually. Suggested solutions for repairing each issue are provided in this appendix.

If an error is displayed during the verification or upgrade process, you can see error descriptions at this [KB article](#).

If a warning is displayed during the verification process, you can use the "[Quick Warning Reference](#)" on the next page to locate the corresponding solution for that warning.

Some solutions require that you change the database user schema:

- **Database User Schema.** Database in SQL Server and a user schema in Oracle. This term is used for both cases because ALM can be deployed over SQL Server and Oracle. Both cases are logical sets of database objects (for example, tables, indexes, and so on) owned by the same logical owner.
- **Expected Database User Schema.** ALM Database User Schema configurations, as defined in the configuration file for a new ALM Database User Schema. As a preparation for the current version, each project database user schema should be aligned with the latest configurations, as defined in this schema.

If you need to modify the database user schema, see the additional instructions under "[Changing the Database User Schema](#)" on page 180.

Quick Warning Reference

This section lists schema and data issues found in warnings generated by the verification process.

- [General Issues](#)160
- [Schema Issues](#)161
- [Data Issues](#)163

General Issues

The following table lists general issues found in verification process warnings. Some issues are fixed automatically by the repair process. Other issues require that you repair them manually.

Type	Problem	Resolution	Details
Database	Database server version not supported	manual repair	"Supported Database Version" on page 164
Database	Schema name contains invalid characters	manual repair	"Valid Database User Schema Name" on page 164
Database	Table owner does not match the ALM server connection method	manual repair	"Mixed Table Ownership" on page 165
Database	Repository over database feature no longer supported	manual repair	Repository over Database Feature
Version control	Certain version control projects cannot be upgraded directly	manual repair	Version Control Validation
Database	Permissions	manual repair	"Database Permissions" on page 165
Database	Configure text search	manual repair	"Text Search Configuration" on page 165

Schema Issues

The following table lists schema issues found in verification process warnings. Some schema issues are fixed automatically by the repair process. Other schema issues require that you repair them manually.

Type	Problem	Element	Resolution	Details
Table	Extra table		manual repair	"Extra Table" on page 168
Table	Missing table		repair process	"Missing Table" on page 169
Views	Extra view		manual repair	"Extra Views" on page 178
Views	Missing view		repair process	"Views" on page 178
Column	Extra column		manual repair	"Extra Column" on page 169
Column	Missing column		repair process	"Missing Column" on page 171
Column	Size mismatch - column size bigger than expected		manual repair	"Column Size Mismatch" on page 170
Column	Size mismatch - column size smaller than expected		repair process	"Column Size Mismatch" on page 170
Column	Type mismatch		manual repair	"Column Type Mismatch" on page 170
Column	Precision		repair process	"Column Precision Mismatch" on page 170
Column	Nullable - column can accept NULL values		repair process	"Column Nullability Mismatch" on page 171

Type	Problem	Element	Resolution	Details
Index	Uniqueness		repair process	"Index Uniqueness Mismatch" on page 173
Index	Clustered		repair process	"Index Clustered" on page 173
Index	Extra		manual repair	Internal Changes
Index	Missing		repair process	"Missing Index" on page 173
Constraint	Missing		repair process	"Missing Constraint" on page 173
Constraint	Extra		manual repair	"Missing Constraint" on page 173
Index	Changed		repair process	"Index Changed" on page 174
Triggers	Extra		manual repair	"Extra Trigger" on page 174
Sequence	Missing		repair process	"Missing Sequence" on page 175
Sequence	Extra		manual repair	"Extra Sequence" on page 175
Sequence	Incorrect		repair process	"Incorrect Sequences" on page 176

Data Issues

The following table lists data issues found in the verification process warnings. Some data issues are fixed automatically by the repair process. Other data issues require that you repair them manually.

Type	Problem	Element	Resolution	Details
Duplicate data	Duplicate values		repair process	"Duplicate Values" on page 176
Duplicate data	Duplicate IDs		repair process	"Duplicate IDs" on page 177
Trees	Wrong number of children	Tables REQ/ALL_LISTS/CYCL_FOLD	repair process	"Tree Inconsistencies" on page 177
Trees	Corrupted path	Tables REQ/ALL_LISTS/CYCL_FOLD	repair process	"Tree Inconsistencies" on page 177
Trees	Orphan records	Tables REQ/ALL_LISTS/CYCL_FOLD	repair process	"Tree Inconsistencies" on page 177
Sequences	Sequence mismatch	Table SEQUENCES	repair process	"Sequences" on page 175
Orphans	Missing parent entities		repair process	"Orphaned Entities" on page 179
Missing data	Missing entities		repair process	"Missing Entities" on page 179
Lists	Missing lists and values	Tables SYSTEM_FIELD / LISTS	repair process	"Missing Lists and/or List Values" on page 180

Type	Problem	Element	Resolution	Details
Encryption	Mismatched passphrases for encrypted values	Tables LAB_HOSTS / LAB_AUT_HOSTS / LAB_DIAGNOSTICS_SERVERS	manual repair	Encrypted Values

General Validation

This section describes the general validation checks the verification process performs.

- [Supported Database Version](#) 164
- [Valid Database User Schema Name](#) 164
- [Mixed Table Ownership](#) 165
- [Database Permissions](#) 165
- [Text Search Configuration](#) 165

Supported Database Version

The verification process checks that the project schema is stored in a supported database server. If the verification process detects that the database server version is not supported, it displays a warning.

Note: For the most up-to-date supported environments, see <http://admhelp.microfocus.com/alm/specs/alm-qc-system-requirements.htm>.

Valid Database User Schema Name

The upgrade mechanism does not support databases that include special characters in the database name. If the verification process finds special characters, you must remove them. For SQL databases, periods are also not supported in the database user schema name.

To remove special characters from database names:

1. Deactivate the project.
2. Ask your database administrator to rename the database user schema to a name that does not include special characters, or periods for SQL databases.
3. Remove the project from Site Administration.
4. Update the **Dbid.xml** file to point to the new database user schema name.
5. Restore the project by using the updated **Dbid.xml** file.
6. Run the verification process again to make sure the problem is resolved.

Mixed Table Ownership

ALM can connect to Microsoft SQL server by using SQL authentication or Windows authentication.

For each of these methods, a different user owns the tables of a project:

- **SQL Authentication.** Table owner is the user td.
- **Windows Authentication.** Table owner is the user dbo (a user mapped to the operating system user that runs the ALM server).

If you create a project with one type of authentication (for example, SQL), and then restore it with the other type of authentication (for example, Windows), these tables cannot be accessed. In this case, new tables are created with owners that are different from those of the old tables. You will not be able to work with the project. It is likely that the upgrade will fail.

To prevent this problem, the duplicate ownership validator checks that the owner of all of the tables in the project database user schema matches the connection method that ALM is using to connect to the server.

To fix table ownership manually, do one of the following:

- **SQL Authentication:** Run the following query to make td the table owner:

```
EXEC sp_changeobjectowner '<table name>', 'td'
```

- **Windows Authentication:** Run the following query to make dbo the table owner:

```
EXEC sp_changeobjectowner 'td.<table name>', 'dbo'
```

Database Permissions

To enable an upgrade to the current ALM version, the project schema requires a set of minimum required permissions. The verification process makes sure that both the project user and the administrator user have all the privileges needed to perform the upgrade.

Text Search Configuration

If your database does support text search, ALM installs the required components when creating a new project database. ALM also activates the text search for the new database. The verification process checks whether your project has the text search feature enabled, and that it is configured correctly.

The verification process validates the following:

- ["Validity of the Text Search Configuration" on the next page](#)
- ["Only Valid Fields Configured Under "Text Search"" on the next page](#)

- ["Text Search Validation for Oracle Database Server" below](#)
- ["Text Search Validation for Microsoft SQL Database Server " on the next page](#)

Validity of the Text Search Configuration

The verification process checks that text search components are installed and are valid on the database server. If a database server is text search-enabled in the DB Servers tab in Site Administration, text search must also be enabled on the Oracle or SQL database server. If the verification process detects that text search is not enabled or configured incorrectly on the Oracle or SQL database server, the upgrade process does not run until you manually repair the problem.

We recommend that you ask your database administrator to reconfigure text search on the Oracle or SQL database server. Alternatively, as a workaround, you can disable text search for the database server from Site Administration.

To disable the text search for the database server:

1. Run the following query on your Site Administration schema:

```
update <SA Schema>.dbservers set db_text_search_enabled = null where  
dbserver_name = '<DB logical name>'
```

2. Restart the ALM server.
3. Run the repair process for your projects.
4. When the repair process completes, run the following query:

```
update <SA Schema>.dbservers set db_text_search_enabled = 'Y' where  
dbserver_name = '<DB logical name>'
```

5. Restart the ALM server.

Only Valid Fields Configured Under "Text Search"

The verification process checks that only valid fields are defined as searchable. You can enable the text search only for specific entities, and only on fields of the type string or memo. The following entities are supported: BUG, COMPONENT, COMPONENT_STEP, DESSTEPS, REQ, TEST, BPTTEST_TO_COMPONENT, and CYCLE. Any other configuration could cause functionality problems during upgrade or customization. This problem is fixed automatically by the repair process.

Text Search Validation for Oracle Database Server

For an Oracle Database server, the verification process checks the following:

- **Validity of Text Search Indexes.** The verification process checks that database text search indexes are valid. Invalid text search indexes can cause functionality problems and even upgrade failure in ALM. If the verification process detects an invalid index, try to recreate the index by dropping it from the schema and creating it again. In Site Administration, click the

Site Projects tab. Select the relevant project and click the **Enable/Rebuild Text Search** button. If this procedure returns an error, consult your database administrator or contact Micro Focus Support.

- **Validity of Project Database User Permissions.** The verification process checks that the project database user has the required permissions to work with text search. When text search is installed on the database, the role CTXAPP is created automatically. ALM requires that this role be granted to all projects database users that support text search. (ALM grants the CTXAPP role automatically when creating the project or enabling the text search for a project.) If this role is not granted to the project database user (configured to support text search), the verification process returns a warning. In these cases, ask your database administrator to grant the required role to the project database user.

Text Search Validation for Microsoft SQL Database Server

The verification process checks that the project database user schema enables the text search feature. To work with text search on SQL project, you need to enable the text search on the database.

To enable text search on the database:

1. Select the database from the SQL server Enterprise Manager.
2. Right-click the database name.
3. Select **Properties/Files**.
4. Select **Use Full-Text Indexing**.

Schema Validation

The verification process helps to ensure that the project database user schema is correct and configured as expected.

The verification process performs two types of schema verifications:

- **Schema Correctness.** Checks that the project database schema includes all of the required schema objects, as defined in the expected database user schema for the project. This verification ensures that all of the required entities exist and are defined as expected. It also ensures that there are no extra entities defined on top of the schema.
- **Alignment to the current version.** Notifies you about differences in the project database user schema caused by internal changes made in Quality Center or ALM. In this way, the verification process aligns the schema with the latest internal changes to the schema made in preparation for the upgrade.

The verification process displays warnings in the verification report if it finds the following:

- Extra entities defined. For example, Table, Column, Trigger, View, and Sequence.
- Differences from the expected definitions. For example, Column Size and Index Attributes.
- Missing objects.

Schema differences found by the verification process can cause upgrade failures or usage problems. As long as the verification process still finds these differences, an upgrade to the current ALM version will not start.

Note: Many of the schema changes can be fixed automatically by the repair process.

The following sections contain possible warnings, grouped by the different database objects, that the verification process can display in the verification report:

- [Tables](#) 168
- [Columns](#) 169
- [Indexes and Constraints](#) 172
- [Triggers](#) 174
- [Sequences](#) 175

Tables

Database tables can contain the following warnings:

- ["Extra Table" below](#)
- ["Missing Table" on the next page](#)

Extra Table

The ALM schema should contain only the tables that are defined in the schema configuration file. Adding extra tables on top of the schema is not supported and might cause future problems with ALM.

Problem: If the verification process finds extra tables that were added manually to the schema, it generates an **Extra Table** warning.

Note: This problem requires manual repair. The repair process cannot fix it.

Solution: Do one of the following:

- **Change the Schema.** If you use the table, copy it to a different schema. If you do not use the table, delete it. Before taking either action, back up the schema and consult your database administrator. For details, see ["Changing the Database User Schema" on page 180](#).
- **Use the Exception File.** For details about the Exception file, see ["Define an Exception File" on page 66](#).

If the project database is case sensitive, the table name must be the same in both the database and the exception file.

Note: Not recommended: Instruct the upgrade to ignore this problem.

Missing Table

The verification process checks that all of the tables defined for the project schema actually exist (according to the tables of each Quality Center/ALM version).

Problem: If a table is missing, the verification process generates a **Missing Table** warning.

Solution: Do one of the following:

- See ["Changing the Database User Schema" on page 180](#).
- Run the repair process to create the missing table. Although you can use the repair process to add these objects, we recommend that you contact Micro Focus Support to make sure that the missing objects are not just symptoms of a bigger problem.

Columns

Database columns can contain the following warnings:

- ["Extra Column" below](#)
- ["Column Size Mismatch" on the next page](#)
- ["Column Precision Mismatch" on the next page](#)
- ["Column Type Mismatch" on the next page](#)
- ["Column Nullability Mismatch" on page 171](#)
- ["Identity Column" on page 171](#)
- ["Missing Column" on page 171](#)

Extra Column

The verification process checks that each table includes the required columns, as defined for the expected database user schema and version. The schema should not include extra columns. Extra columns in a table might cause upgrade failure or functionality problems.

Problem: If the verification process detects an extra column (that does not exist in the database user schema definitions) in one of the tables, it generates an **Extra Column** warning.

Note: This problem requires manual repair. The repair process cannot fix it.

Solution: Do one of the following:

- **Change the Schema.** If you have an internal implementation that requires extra table columns, move the extra columns to a different table in a different schema. If you do not use a particular column, delete it. Before taking either action, back up your schema and consult your database administrator. For a more detailed explanation, see ["Changing the Database User Schema" on page 180](#).

- **Use the Exception File.** For details about the Exception file, see ["Define an Exception File" on page 66](#).

Note: Not recommended: Instruct the upgrade to ignore this problem.

Column Size Mismatch

The verification process checks that all the table columns are defined as expected. This validation ensures that the column size matches the expected size as defined for each table column. This verification excludes user-defined fields, whose size can be customized through project customization.

Some column mismatch warnings are caused by internal changes made in Quality Center 10.00 that are fixed by the repair process automatically. For details, see [Internal Quality Center Changes](#).

Problem A: Size is bigger than expected. If the column size is bigger than expected, decrease the column size to the required size manually. Because this operation can cause data loss, it is not performed automatically by repair process.

Note: This problem requires manual repair. The repair process cannot fix it.

Solution A: Consult your database administrator to resolve this issue. For risks involved in changing the database user schema, see ["Changing the Database User Schema" on page 180](#).

Problem B: Size is smaller than expected. If the column size is smaller than expected, the repair process fixes the problem automatically by increasing the column size to the expected size.

Solution B: Run the repair process to increase the current size to the required size.

Column Precision Mismatch

In an Oracle Database, "precision" is the term used to define the size of fields with the INTEGER type.

Problem: The verification process generates a warning if the precision defined for a certain column is smaller than expected.

Solution: Run the repair process to increase the current precision to the required precision.

Column Type Mismatch

Changing a column type causes the upgrade to fail, and can cause major functionality problems.

Problem: The verification process generates a **Column Type** warning if the column type has changed.

Note: This problem requires manual repair. The repair process cannot fix it.

Solution: Consult your database administrator to resolve this issue. For risks involved in changing the database user schema, see ["Changing the Database User Schema" on page 180](#).

Column Nullability Mismatch

One of the attributes that is defined for a column is whether it can accept null values. A null is the absence of a value in a column of a row. Nulls indicate missing, unknown, or inapplicable data. If you have defined a NOT NULL or PRIMARY KEY integrity constraint for a particular column, you cannot insert rows into the column without adding a value.

Problem: The verification process compares the required definitions for each column in the expected database user schema to the project database user schema. If it encounters differences in the column NULL attribute definition, it generates a **Column Nullable** warning.

Solution: Run the repair process. The repair process runs a query to modify the column attributes to the expected attributes.

If the column includes NULL values, the repair process cannot update the column attribute to NOT NULL (if this is the required attribute) for the column. Ask your database administrator how to remove the NULL values from the column. After removing the NULL values, run the repair process again. For details, see ["Changing the Database User Schema" on page 180](#).

Identity Column

The IDENTITY property is one of the attributes defined for columns in Microsoft SQL server.

Problem: As part of the verification for the columns attributes, the verification process might find a column IDENTITY property that is not configured as expected.

Note: This problem requires manual repair. The repair process cannot fix it.

Solution: Change the IDENTITY property of the column to the expected configuration (according to the output from the verification process report) manually. Consult your database administrator to resolve this issue. For details, see ["Changing the Database User Schema" on page 180](#).

Missing Column

If a column is missing from a table, run the repair process or contact Micro Focus Support.

Problem: If the verification process finds that a column is missing from one of the tables, it generates a **Missing Column** warning.

Solution: Do one of the following:

- Run the repair process to fix the problem.
- See ["Changing the Database User Schema" on page 180](#).

Indexes and Constraints

A database index is a data structure that improves the speed of operations in a table. You can create indexes using one or more columns, providing the basis for both rapid random lookups and efficient ordering of access to records. Database Constraints are constraints on the database that require relations to satisfy certain properties.

Database indexes and constraints can cause the following validation warnings:

- ["Extra Index" below](#)
- ["Extra Constraint" below](#)
- ["Index Uniqueness Mismatch" on the next page](#)
- ["Index Clustered" on the next page](#)
- ["Missing Constraint" on the next page](#)
- ["Missing Index" on the next page](#)
- ["Index Changed" on page 174](#)
- ["Index Order Changed " on page 174](#)

Extra Index

The ALM schema should include only those indexes defined in the required schema configurations.

Problem: If the verification process finds an index that is not defined in the required schema configuration, it generates an **Extra Index** warning.

Note: This problem requires manual repair. The repair process cannot fix it.

Solution: Remove the extra indexes manually. Consult with your database administrator to resolve this issue. For details, see ["Changing the Database User Schema" on page 180](#).

Extra Constraint

The ALM schema should include only those constraints defined in the required schema configurations.

Problem: If the verification process finds a constraint that is not defined in the required schema configuration, it generates an **Extra Constraint** warning.

Note: This problem requires manual repair. The repair process cannot fix it.

Solution: Remove the extra constraint manually. Consult with your database administrator to resolve this issue. For details, see ["Changing the Database User Schema" on page 180](#).

Index Uniqueness Mismatch

A unique index guarantees that the index key contains no duplicate values. As a result, every row in the table is unique. Specifying unique indexes on ALM data tables ensures data integrity of the defined columns. In addition, it provides helpful information that is used as a query optimizer.

Problem: If the index uniqueness attribute does not have the expected value, the verification process generates an **Index Uniqueness Mismatch** warning.

You cannot create a unique index, unique constraint, or PRIMARY KEY constraint if duplicate key values exist in the data. The verification process performs these data validations. If a table has duplicate values or IDs, based on the index definitions on that table, the verification process also displays the duplication in the verification report. In this case, the repair process automatically fixes the duplication problem before creating the unique index.

Solution: Run the repair process to fix the problem.

Index Clustered

In Microsoft SQL, index type can be classified as clustered or non-clustered. The verification process compares the required definitions for each index in the expected database user schema to the project database user schema.

Problem: If the verification process finds differences in the index clustered attribute definition, it generates an **Index Clustered** warning.

Solution: Run the repair process to fix the problem.

Missing Constraint

Constraints are rules that the database enforces to improve data integrity.

Problem: If the verification process finds a constraint that should be defined as missing, it generates a **Missing Constraint** warning.

Solution: Run the repair process to fix the problem.

Missing Index

The verification process checks that all the required indexes (as defined in the expected database user schema) exist in the projects database user schema.

Problem: If the verification process does not find all the required indexes in the projects database user schema, it generates a **Missing Index** warning.

Solution: Run the repair process to fix the problem.

Index Changed

The verification process checks that the indexes are defined according to the expected database user schema.

Problem: If the verification process finds an index that is not defined according to the expected database user schema, it generates an **Index Changed** warning.

This warning can indicate the following problems:

- Function in a function-based index is different than expected.
- Index is not defined on the expected columns.

Solution: Run the repair process to fix the problem. The repair process removes the index, and then recreates it, based on the required definitions for this index.

Index Order Changed

The verification process checks that the order of the columns in the index definition has not changed.

Problem: If the order of the columns in the index definition has changed, the verification process generates an **Index Order Changed** warning.

Solution: Run the repair process to fix the problem. The repair process removes the index, and then recreates it, based on the required definitions for this index.

Triggers

A database trigger is procedural code that is automatically executed in response to certain events on a particular table in a database.

Database triggers can contain the following warning:

- ["Extra Trigger" below](#)

Extra Trigger

Extra triggers can cause upgrade failures and functionality problems.

Problem: If the verification process finds an extra trigger, it generates an **Extra Trigger** warning.

Note: This problem requires manual repair. The repair process cannot fix it.

Solution: Before upgrading, back up your database schema and remove the extra triggers manually.

Because extra triggers can cause upgrade failures, the upgrade process cannot ignore this warning by using the Exception file. For details, see ["Changing the Database User Schema" on page 180](#).

Sequences

A sequence is an Oracle object that acts as a generator that provides a sequential series of numbers.

Database sequences can contain the following warnings:

- ["Extra Sequence" below](#)
- ["Missing Sequence" below](#)
- ["Incorrect Sequences" on the next page](#)

Extra Sequence

ALM schemas should contain only the sequences that are defined in the schema configuration file.

Problem: If the verification process finds an extra sequence, it generates an **Extra Sequence** warning.

Note: This problem requires manual repair. The repair process cannot fix it.

Solution: Do one of the following:

- **Change the Schema.** Move the sequence to a new database user schema. Before doing so, consult with your database administrator. For details, see ["Changing the Database User Schema" on page 180](#).
- **Use the Exception File.** For details about the Exception file, see ["Define an Exception File" on page 66](#).

Note: Not recommended: Instruct the upgrade to ignore this problem.

Missing Sequence

Problem: If the verification process finds that one of the sequences that should be defined on the ALM schema is missing, it generates a **Missing Sequence** warning.

Solution: Do the following:

- Run the repair process to fix the problem.
- See ["Changing the Database User Schema" on page 180](#).

Incorrect Sequences

Problem: Sometimes the Oracle object sequence numbers become incorrect, for example, if an export of the database is done on a live activated project, in which users are still modifying tables. If the verification process finds that Oracle sequences objects are not fully synchronized with ALM schema table IDs, the verification process generates an **Incorrect Oracle sequences found** warning.

Solution: Run the repair process to fix the problem.

Data Validation

One of the main functions of the verification process is to ensure that the project database contains valid data.

The verification process helps you find and fix the following problems:

• Duplicate Values	176
• Duplicate IDs	177
• Tree Inconsistencies	177
• Views	178
• Orphaned Entities	179
• Missing Entities	179
• Missing Lists and/or List Values	180

Duplicate Values

Some fields (or a combination of fields) must be unique in given tables. This constraint is enforced by the creation of a unique index on these fields. For example, the combination of fields TS_SUBJECT and TS_NAME, which represent the ID of the test's parent folder and test name, must be unique. It is not possible to create two tests with the same name under the same folder. In rare cases, a corrupted database contains duplicate values in these fields.

Problem: The verification process checks that all unique indexes exist (and therefore enforce unique values). If the verification process finds duplicate values, it does not permit the upgrade to run on the project.

The verification report specifies the fields in which there are duplications and number of duplicate values found, as shown below.

Duplicate Values			
Looks for records in selected tables that have duplicate field values. Values must be unique. The Repair tool automatically handles duplicate values.			
#	Table	Columns	# Duplicate items

Solution: Automatic Repair. Run the repair process to automatically handle the duplicate values. The repair process renames the duplicate values to resolve the problem.

Duplicate IDs

Most tables have a unique primary key, usually a unique single column. If there are duplicate values in this field, the primary key is not created.

For example, in a table called test, the column TS_TEST_ID represents the test ID, which is unique. In rare cases, a corrupted database contains duplicate IDs.

Problem: The verification process checks that all IDs in a table are unique. If it finds duplicate IDs, it does not permit the upgrade to run on the project.

The verification report specifies the fields in which there are duplicate items and values, as shown below.

Duplicate IDs			
Looks for records in selected tables that have duplicate ID field values. The Repair tool automatically deletes the duplicate records.			
#	Table	Column	# Duplicate Items
1	TEST	TS_TEST_ID	2

Solution: Automatic Repair. The repair process automatically deletes one of the records with a duplicate ID.



Caution: This option assumes that the entire record is duplicated, and that the duplicated record is not accessible from the ALM user interface. Because there can be exceptions, we recommend that you use this option only after verifying manually that this record deletion will not cause data loss.

Tree Inconsistencies

The verification process checks four different entity trees (hierarchical representation of entities):

- Test Plan tree
- Business Components tree
- Requirement tree
- Test Lab tree

The verification process checks that the data in the tree tables is correct.



Caution: Do not manually fix any problems related to tree data. The repair process fixes them automatically.

Problem: The verification process checks for the following types of problems:

- **Corrupted Path.** This is an internal ALM field that contains a string that represents the order of each node in the tree.
- **Wrong Number of Children.** This is an internal ALM field that contains the number of children for each node in the tree.
- **Orphan Records in Trees.** By definition, orphan records do not have parent records. As a result, you cannot access them through the ALM user interface.

Solution: Automatic Repair. Run the repair process to automatically fix any problems related to tree data.



Caution: Before beginning the automatic repair, review each orphan record carefully. If the verification process finds an orphan record, it deletes it (and all its descendants) from the tree automatically.

Views

Database views can contain the following warning:

- ["Extra Views" below](#)

Extra Views

ALM schemas should contain only the views that are defined in the schema configuration file.

Problem: If the verification process detects extra views that were added manually to the schema, it displays an **Extra Views** warning. Adding extra views on top of the schema is not supported and could cause problems.



Note: This problem requires manual repair. The repair process cannot fix it.

Solution: Do one of the following:

- **Change the Schema.** If you use the view, copy it to a different schema. If you do not use the view, delete it. Before taking either action, back up your schema and consult your database administrator. For details, see ["Changing the Database User Schema" on page 180](#).
- **Use the Exception File.** For details about the Exception file, see ["Define an Exception File" on page 66](#).

Note: Not recommended: Instruct the upgrade to ignore this problem.

Orphaned Entities

The verification process checks for entity data that is missing corresponding parent data. For example, the following entities might be missing corresponding test configurations or test criteria:

- Test configuration coverage
- Criteria coverage
- Run criteria
- Runs
- Test instances

Caution: Do not manually fix any problems related to orphaned entities. The repair process fixes them automatically.

Problem: In version-controlled projects, deleting a test configuration or test criteria did not delete corresponding entities after checking in. This caused incorrect coverage calculation.

Solution: Automatic Repair. Run the repair process to automatically fix any problems related to orphaned entities created by this problem.

Missing Entities

The verification process checks for data that is missing. For example, the following entities might be missing:

- Test configurations
- Test criteria

Caution: Do not manually fix any problems related to missing entities. The repair process fixes them automatically.

Problem: The upgrade process can detect that certain entities are missing based on information that exists in related tables.

Solution: Automatic Repair. Run the repair process to automatically fix any problems related to missing entities created by this problem.

Missing Lists and/or List Values

The verification process checks that all of the fields of List type are associated with a list.

Problem: If a list and/or its values are missing, the verification process generates a warning about missing lists or missing list values.

Solution:

Run the repair process to create the missing list and/or its values.

Missing lists are re-created with the name: **AUTO_GENERATED_LIST_NAME_<unique_number>**

After running the repair process, do the following in **Customization > Project Lists**:

- Rename any lists whose names are prefixed by **AUTO_GENERATED_LIST_NAME_**.
- If necessary, add any list values that are missing.



Tip: Although you can use the repair process to add these objects, we recommend that you contact Micro Focus Support to make sure that the missing objects are not just symptoms of a bigger problem.

Changing the Database User Schema

This section describes the problems that require manual repair (cannot be fixed automatically by the repair process), and recommends solutions for these problems. If you encounter any of the problems mentioned below, consult with your database administrator or contact Micro Focus Support for further guidelines to resolve these problems before upgrading.

The stability of the new database upgrade component depends on the database user schema validity. We recommend that you not use the Exception file to change the database user schema.

This section includes:

- [Missing Database Objects](#) 181
- [Missing List Warning](#) 181
- [Sequences Warning](#) 181
- [Changed Database Objects](#) 181
- [Extra Database Objects](#) 182

Missing Database Objects

Missing database objects can be symptoms of a bigger problem.

Problem: Missing database objects (for example, tables and indexes) can yield unexpected and unwanted behavior.

Solution: Although you can use the repair process to add these objects, we recommend that you contact Micro Focus Support to make sure that the missing objects are not just symptoms of a bigger problem.

Missing List Warning

User-defined fields of List type must be associated with lists.

Problem: If a list is missing for a user-defined field, the verification process generates a **Missing List** warning.

Solution: Contact Micro Focus Support for instructions on changing the data type of the user-defined field from List to String in the SYSTEM_FIELD table.



Caution: Contact Micro Focus Support before attempting to fix the problem manually.

Sequences Warning

An internal mechanism manages IDs and other system numerators. The table SEQUENCES holds the name of the table or other entity whose numeration is being tracked as well as its highest current value.

Problem: If one of the records is missing in this table, or if one of the values is incorrect, the verification process generates a **Sequences** warning.

Solution: The repair process fixes the problem automatically.



Caution: We strongly recommend that you not attempt to fix the problem manually.

Changed Database Objects

Any of the following cases is defined as a Changed Database Object:

- Data type of a column was changed
- Length of a column was changed
- Nullability of a column was changed
- Column is defined as identity although it should not be defined as such, or vice versa

Problem: A changed column data type can result in incorrect behavior on the server side.

Solution: To avoid this behavior, make sure that you have resolved all data type and length concerns before beginning the upgrade.

For every changed database object that is found, do the following:

1. Create a new column with the required attributes as originally defined by the ALM server.
2. Move the data from the old column to the new one.
If you cannot move the data (for example, move strings to numeric columns, or move large data to smaller fields), contact Micro Focus Support.
3. Remove the old column.
4. Rename the new column to the original column name.

Extra Database Objects

ALM has various customization options. One option is to add user-defined fields (UDFs). You can add a UDF by using either the project customization user interface or through OTA (Open Test Architecture).

Problem: Any other addition to the database user schema (for example, defining extra objects on top of ALM schema) can result in a failure, such as the following:

- **Name Conflict.** If the later version happens to include a name that you added for a proprietary database object (for example, a table, view, or column), the two names will be in conflict.
- **Copy and Synchronize Failure.** If the database user schema contains extra or missing database objects, some ALM mechanisms for copying and synchronizing might fail.
- **Extra Triggers.** If the database contains extra triggers, some update operations might fail.

Solution:

For each extra database object that is found, perform the corresponding solution:

- **Move extra columns to newly created tables.**

To make sure a new table has a one-to-one relationship with the original table, define the primary key of the new column in the new table with the value of the primary key of the original column in the original table.

- **Move extra tables to a different database user schema.**

These extra tables include those tables created above. You might need to amend the proprietary application data access of these tables. You can still access these tables from within the ALM database connection by specifying the full name.

- Oracle

```
<schema name>.<table name>
```

- SQL Server

```
<database name>.td.<table name>
```

To be able to see these tables, you must grant the necessary permissions for the database user schema.

- **Move extra views to a different database user schema.**

Like extra tables, these views can be moved to a different database user schema. In addition, you must grant reading permissions to the newly created database user schema on the database user schema objects.

- **Remove referential integrity between customer database objects and ALM database objects.**

This removal includes no data loss.

- **Remove extra triggers before the upgrade, and, only if truly necessary, restore them after the upgrade.**

No data loss is involved. The upgrade process includes data upgraders that perform some data manipulations (for example, removing duplicate values, fixing tree structures, and so on).

Your triggers will not be invoked on these update events.

As a result, you need to do the following:

- a. Ask Micro Focus Support for information about the data upgrader activity.
- b. Review the information about the data upgrader activity.
- c. Decide on which proprietary updates you need to perform.

- **Remove extra indexes.**

You can log all indexes before the upgrade, and (only if necessary) restore them after the upgrade. No data loss is involved.

- **Oracle Database only: Move extra sequences to a newly created database user schema.**

To access the extra sequences from the database user schema, you must grant ALM the required permissions. When moving these sequences, set them to start with the number they reached at the time of the move.

Send Us Feedback



Let us know how we can improve your experience with the Installation and Upgrade Guide - Windows.

Send your email to: docteam@microfocus.com

