



# Dimensions CM

## CM Bridge Guide

Copyright © 2014 - 2020 Micro Focus or one of its affiliates.

The only warranties for products and services of Micro Focus and its affiliates and licensors ("Micro Focus") are set forth in the express warranty statements accompanying such products and services. Nothing herein should be construed as constituting an additional warranty. Micro Focus shall not be liable for technical or editorial errors or omissions contained herein. The information contained herein is subject to change without notice.

Contains Confidential Information. Except as specifically indicated otherwise, a valid license is required for possession, use or copying. Consistent with FAR 12.211 and 12.212, Commercial Computer Software, Computer Software Documentation, and Technical Data for Commercial Items are licensed to the U.S. Government under vendor's standard commercial license.

Product version: 14.5.2

Last updated: December 10, 2020

# Table of Contents

---

<i>Chapter 1</i>	<b>Introduction</b> . . . . .	<b>3</b>
	What is Dimensions CM Bridge? . . . . .	4
	Dimensions CM Repository URL . . . . .	4
	Specifying Multiple Base Databases . . . . .	5
	Support for Subversion Properties . . . . .	6
	Performance Improvement Tips . . . . .	6
	Limitations and Known Issues . . . . .	6
	Troubleshooting . . . . .	7
<i>Chapter 2</i>	<b>Apple Xcode</b> . . . . .	<b>9</b>
	Introduction . . . . .	10
	Add an Xcode Project to Dimensions CM . . . . .	10
	Check Out an Xcode Project from Dimensions CM . . . . .	10
	Commit Changes in an Xcode Project to Dimensions CM . . . . .	11
	Update an Xcode Project . . . . .	11
<i>Chapter 3</i>	<b>TortoiseSVN</b> . . . . .	<b>13</b>
	Introduction . . . . .	14
	Browse Files and Folders . . . . .	14
	View Log Messages . . . . .	15
	Check Out a Folder . . . . .	15
	Commit Changes to Dimensions CM . . . . .	16
<i>Chapter 4</i>	<b>Subversion Command Line</b> . . . . .	<b>17</b>
	Introduction . . . . .	18
	List Files and Folders . . . . .	18
	List Previous Revisions of Files and Folders . . . . .	19
	Check Out a Stream . . . . .	19
	Commit Changes to Dimensions CM . . . . .	20
	View File Annotations . . . . .	20
	Use SVN Properties . . . . .	20



# Chapter 1

---

## Introduction

What is Dimensions CM Bridge?	4
Dimensions CM Repository URL	4
Support for Subversion Properties	6
Performance Improvement Tips	6
Limitations and Known Issues	6
Troubleshooting	7

---

# What is Dimensions CM Bridge?

Dimensions CM Bridge is a connector between a Subversion enabled client and a CM server that enables:

- Your development tools to talk to a CM repository instead of Subversion.
- Development teams familiar with Subversion to continue using their existing IDEs and tools with the additional benefits of Dimensions CM.
- Dimensions CM to be used with IDEs that do not have a “native” integration with CM but do support Subversion.

Micro Focus supports any Subversion client that uses the HTTPv1 protocol, see the [platform matrix](#) for details.

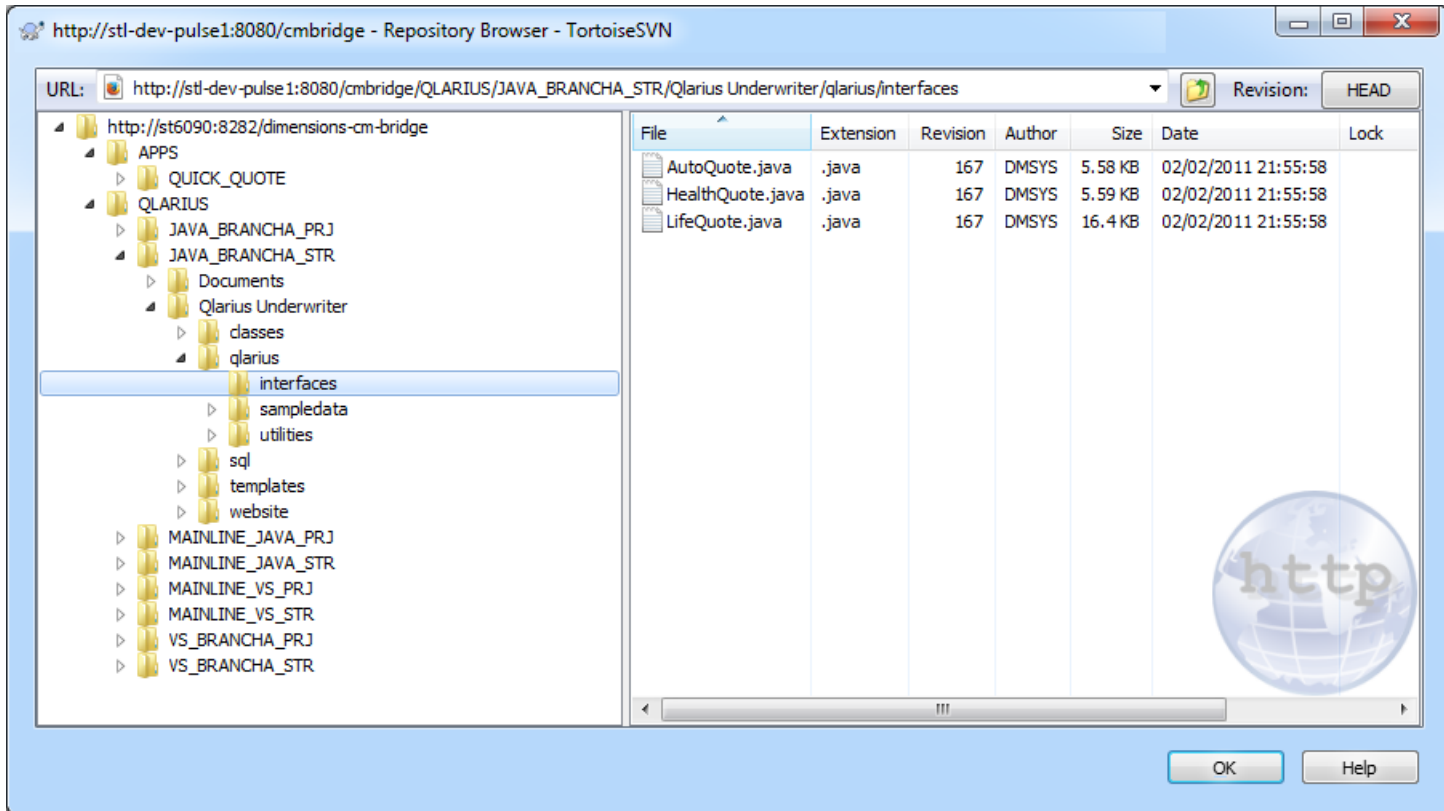
**NOTE** CM Bridge is automatically installed with a Dimensions CM server.

## Dimensions CM Repository URL

A Dimensions CM repository is not structured as a single file and folder tree like Subversion, instead each stream has its own files and folders. When working with a Dimensions CM stream from a Subversion client you must specify the Dimensions CM *product* and *stream* names in uppercase as part of the URL. For example:

- URL that points to the root of the QLARIUS product:  
`http://<web server>:8080/cmbridge/QLARIUS/`
  - URL that points to the root folder of the JAVA\_BRANCHA\_STR stream in the QLARIUS product:  
`http://<web server>:8080/cmbridge/QLARIUS/JAVA_BRANCHA_STR`
  - URL that points to a folder and file in the JAVA\_BRANCHA\_STR stream:  
`http://<web server>:8080/cmbridge/QLARIUS/JAVA_BRANCHA_STR/qlarius  
Underwriter/qlarius/interfaces/AutoQuote.java`
- TIP** Products and streams are treated as directories in a repository.
- In the example below there are two products, *APPS* and *QLARIUS*, and the streams are listed as child folders of the products. There are multiple folders and files under *JAVA\_BRANCHA\_STR*.

**NOTE** You can use a web browser, SVN-based clients, or the SVN command line to view the contents of a repository.



## Specifying Multiple Base Databases

You can use multiple base databases with CM Bridge:

- 1 Open the startup.properties file located in:
  - Windows: C:\ProgramData\Micro Focus\Bridge\conf
  - Linux: /opt/microfocus/dimensions/14.<ver>/cm/bridge\_data/conf/
- 2 Add this parameter: scm.multirepo=true
- 3 Specify multiple base databases in the format scm.url.<prefix>. For example:
  - scm.url.typical=scm\:dimensions\://sun/cm\_typical@sun14
  - scm.url.mybasedb=scm\:dimensions\://sun/mybasedb@sun14
- 4 Save the properties file.
- 5 Add the prefix to the CM repository URL:
 

```
http://<host>:8080/cmbridge/<prefix>/<product>/<stream>
```

 For example:
 

```
http://sun:8080/cmbridge/cm_typical/QLARIUS/JAVA_BRANCHA_STR
```

---

## Support for Subversion Properties

CM Bridge supports the storage and retrieval of Subversion properties. The following standard Subversion operations are supported:

- `propset`
- `propget`
- `propedit`

For details about using SVN externals with CM Bridge see [page 20](#).

## Performance Improvement Tips

To improve performance, limit the list of streams that is displayed to your favorite and recent streams.

- 1 Open the `startup.properties` file located in:
  - Windows: `C:\ProgramData\Micro Focus\Bridge\conf`
  - Linux: `/opt/microfocus/dimensions/14.<ver>/cm/bridge_data/conf/`

- 2 Add this parameter: `streams.favrecent.filter=true`

**TIP:** To specify the number of recent streams that is displayed, add this parameter:

```
streams.favrecent.recentcount=n
```

## Limitations and Known Issues

- Operations are only supported with Dimensions CM streams (not projects).
- The log output is empty for a file or folder that has not changed since a stream was created.
- When files are checked-out or exported, item header substitution is not performed.
- Dimensions CM directory items are not supported.
- All Subversion commands are supported except:
  - `merge`
  - `mergeinfo`
  - `copy` (you can only copy streams and projects in a single product).
  - `switch`
- SVN tagging is not supported.
- SVN branches are only supported at the product level.



# Troubleshooting

When investigating issues with CM Bridge first look in the log file:

C:\ProgramData\Micro Focus\Bridge\\_logs

This log may include an error message or stack trace that can help Support to identify the issue.

**TIP**

- If you are having an issue in a particular client, try reproducing the problem from a Subversion command line as this can display a more detailed error message.
- Include logs, screenshots, error message text, and the steps you performed to reproduce a problem when you are reporting an issue to Support.



## Chapter 2

---

# Apple Xcode

Introduction	10
Add an Xcode Project to Dimensions CM	10
Check Out an Xcode Project from Dimensions CM	10
Commit Changes in an Xcode Project to Dimensions CM	11
Update an Xcode Project	11

---

# Introduction

The examples below describe some of the ways that you can use CM Bridge with Apple Xcode.

Watch a video about using Apple Xcode with Dimensions CM (Internet access is required):

[http://help.serena.com/doc\\_center/demos/CM\\_141\\_xcode.html](http://help.serena.com/doc_center/demos/CM_141_xcode.html)

## Add an Xcode Project to Dimensions CM

You can add an existing Apple Xcode project to a stream in a Dimensions CM repository.

- 1 From a Terminal window change directory to the folder where the Xcode project is located.
- 2 Use the Subversion command line to import the folder into Dimensions CM. For example:

```
svn import Example http://<web server>:8080/cmbridge/QLARIUS/XCODE/  
Example -m "Initial commit" --username <user ID> --password  
<password>
```

## Check Out an Xcode Project from Dimensions CM

You can check out an Xcode project from Dimensions CM.

- 1 Open Xcode.
- 2 Do one of the following:
  - From the Welcome screen select **Check out an existing project**.
  - From the Source control menu select **Check Out**.

The Check Out dialog box appears.

- 3 Do one of the following:
  - Select a previously used repository.
  - Enter a URL that identifies a Dimensions CM server and product in this format:

```
http://<web server>:8080/cmbridge/<CM product>
```

For example:

```
http://dev-pulse:8080/cmbridge/QLARIUS/
```

- 4 Click **Next**.
- 5 From the repository **Type** list select Subversion.
- 6 If prompted enter a CM user ID and password and click **Next**.

- 7 Open a CM product.
- 8 Select the project or stream to be checked out and click **Next**.
- 9 Select the local directory where the project or stream will be checked out.
- 10 Click **Check Out**. The project or stream is checked out from Dimensions CM to the local directory.

## Commit Changes in an Xcode Project to Dimensions CM

You can commit changes that you make in an Xcode project to a stream or project in Dimensions CM. You can also relate commits to Dimensions CM change requests.

- 1 From the **Source Control** menu select **Commit**.
- 2 In the **Messages** box:
  - Enter a commit comment for your changes.
  - Optionally enter the IDs of one or more Dimensions CM change requests as part of the comment in this format: [CR1,CR2]. For example:  
`[QLARIUS_CR_21,QLARIUS_CR_36] Your comment`
- 3 Click **Commit**.

## Update an Xcode Project

You can update the local version of an Xcode project with changes committed by other developers in your team. From the **Source Control** menu select **Update**.



# Chapter 3

---

## TortoiseSVN

Introduction	14
Browse Files and Folders	14
View Log Messages	15
Check Out a Folder	15
Commit Changes to Dimensions CM	16

# Introduction

CM Bridge supports the majority of TortoiseSVN operations. The following examples describe some of the ways that you can use CM Bridge with TortoiseSVN.

Watch a video about using TortoiseSVN with Dimensions CM (Internet access is required):

[http://help.serena.com/doc\\_center/demos/CM\\_141\\_tortoisesvn.html](http://help.serena.com/doc_center/demos/CM_141_tortoisesvn.html)

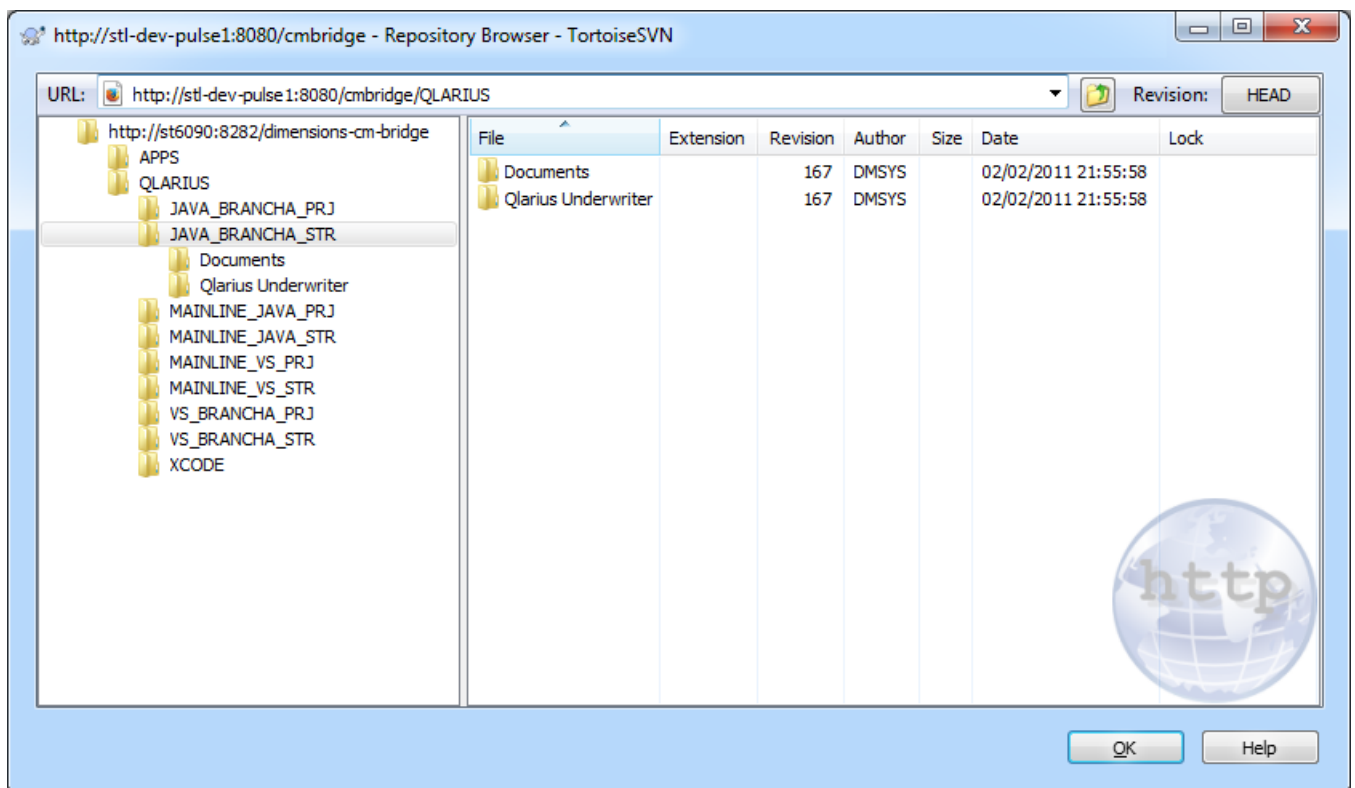
## Browse Files and Folders

You can use TortoiseSVN to browse the folder structure of a stream and view the contents of files.

- 1 From Windows Explorer open the TortoiseSVN repository browser.
- 2 Enter a URL to a Dimensions CM stream, for example:

`http://<web server>:8080/cmbridge/QLARIUS/JAVA_BRANCHA_STR`

- 3 If prompted enter a CM user ID and password. The structure of the repository is displayed in the repository browser and the stream that you specified is expanded:



- 4 To browse a folder's contents, select it.



- 5 To browse a file, right-click it and select **Open**. The file is downloaded from Dimensions CM and opened in the default application for the file type.

## View Log Messages

You can use TortoiseSVN to view the history of any object and see what changes were delivered to it.

Right-click a folder and select **Show Log**. The details of all the changesets delivered to that folder are displayed including the files modified in each commit.

The screenshot shows the TortoiseSVN Log Messages window for a repository. The window title is "http://stl-dev-pulse1:8080/cmbridge/QLARIUS/VS\_BRANCHA.../XCode - Log Messages - TortoiseSVN". The window contains a table of revisions and a detailed view of the selected revision.

Revision	Actions	Author	Date	Message
199		DMSYS	09 June 2014 08:24:17	Move to st7425
197		DMSYS	09 June 2014 08:22:54	External
195		DMSYS	09 June 2014 08:20:18	Bob Smith
193		DMSYS	09 June 2014 08:00:23	Automatic changes
191		DMSYS	09 June 2014 07:58:54	Add an example class
189		DMSYS	09 June 2014 07:56:09	Adds a property
187		DMSYS	09 June 2014 07:41:54	Import XCode example

Below the revision list, the details for revision 193 are shown:

Automatic changes

Path	Action	Copy from path	R
/QLARIUS/VS_BRANCHA_STR/XCode/Example/Example/SSEExampleClass.h	Deleted		
/QLARIUS/VS_BRANCHA_STR/XCode/Example/Example/SSEExampleClass.m	Deleted		
/QLARIUS/VS_BRANCHA_STR/XCode/Example/Example.xcodeproj/project.pbxproj	Modified		
/QLARIUS/VS_BRANCHA_STR/XCode/Example/Example.xcodeproj/project.xcworkspace/xcsharedata/Example.xccheckout	Modified		

Showing 7 revision(s), from revision 187 to revision 199 - 1 revision(s) selected, showing 5 changed paths

Show only affected paths  
 Stop on copy/rename  
 Include merged revisions

Buttons: Statistics, Help, OK, Next 100, Refresh

## Check Out a Folder

You can use TortoiseSVN to get the contents of a stream to an area on disk.

- 1 From Windows Explorer open the TortoiseSVN repository browser.
- 2 Enter a URL to a Dimensions CM stream, for example:  

```
http://<web server>:8080/cmbridge/QLARIUS/JAVA_BRANCHA_STR
```
- 3 If prompted enter a CM user ID and password. The structure of your repository is displayed and the stream you specified is expanded.
- 4 Right-click the stream and select **Checkout**.
- 5 Enter the location where you want to check out the files

- 
- 6 Click **OK**. The files and folders are copied from the Dimensions CM stream to the disk.

## Commit Changes to Dimensions CM

You can use TortoiseSVN to commit changes that you have made on disk back to a Dimensions CM repository. You can also relate commits to Dimensions CM change requests.

- 1 If you have added a new file, to register the addition right-click it and from the **TortoiseSVN** menu select **Add**.
- 2 To commit all your changes, navigate to the stream's parent folder, right-click, and select **SVN Commit**.
- 3 In the **Commit** box:
  - Enter a commit comment for your changes.
  - Optionally enter the IDs of one or more Dimensions CM change requests as part of the comment in this format: [CR1,CR2]. For example:  
[QLARIUS\_CR\_21,QLARIUS\_CR\_36] Your comment
- 4 Click **OK**.

## Chapter 4

---

# Subversion Command Line

Introduction	18
List Files and Folders	18
List Previous Revisions of Files and Folders	19
Check Out a Stream	19
Commit Changes to Dimensions CM	20
View File Annotations	20
Use SVN Properties	20

---

# Introduction

CM Bridge supports the majority of Subversion commands. The following examples describe some of the ways that you can use CM Bridge with the Subversion command line.

Watch a video about using the Subversion command line with Dimensions CM:

[http://help.serena.com/doc\\_center/demos/CM\\_141\\_svn.html](http://help.serena.com/doc_center/demos/CM_141_svn.html)

## List Files and Folders

Use the Subversion `ls` command to browse the folder structure of a stream and view its details, for example:

```
svn ls "http://<web server>:8080/cmbridge/QLARIUS/JAVA_BRANCHA_STR"
--username <user ID> --password <password>
```

Use the `ls` verbose option to list additional details about the files and folders and list the subfolders, for example:

```
svn ls -v "http://<web server>:8080/cmbridge/QLARIUS/JAVA_BRANCHA_STR/
Qlarius Underwriter/qlarius/interfaces" --username <user ID> --
password <password>
```

The verbose directory listing contains additional information about each file or folder, such as:

- The repository version number when it was last modified.
- The user who last modified it.
- The date and time of the last modification.

## List Previous Revisions of Files and Folders

Use the Subversion *log* command to browse the history of a stream's folder structure in a repository and view details of previous revisions of files and folders, for example:

```
svn log "http://<server>:8080/cmbridge/QLARIUS/JAVA_BRANCHA_STR" --  
    username <user ID> --password <password>
```

Output:

```
-----  
-  
r199 | EMMA | 2014-06-09 08:24:17 +0100 (Mon, 09 Jun 2014) | 1 line  
Delivered some changes for the CM Bridge preview  
-----  
-  
r197 | DMSYS | 2014-06-09 08:22:54 +0100 (Mon, 09 Jun 2014) | 1 line  
External test  
-----  
-  
r195 | USER1 | 2014-06-09 08:20:18 +0100 (Mon, 09 Jun 2014) | 1 line  
Initial delivery
```

In the example above there have been three commits creating repository versions r199, r197, and r195.

Use the *ls* command -r option to list the contents of a specific version of a stream, for example:

```
svn ls -v -R -r 195 "http://<web server>:8080/cmbridge/QLARIUS/  
    JAVA_BRANCHA_STR" --username <user ID> --password <password>
```

This command lists the contents of the stream at revision 195.

## Check Out a Stream

Use the Subversion *checkout* command to check out an entire stream to a local disk, for example:

```
svn checkout "http://<web server>:8080/cmbridge/QLARIUS/  
    JAVA_BRANCHA_STR" --username <user ID> --password <password>
```

---

## Commit Changes to Dimensions CM

Use the Subversion *add* command to register files that have been added and the *commit* command to deliver changes made on disk back to a Dimensions CM stream. You can also relate commits to Dimensions CM change requests.

- 1 Change directory to the stream's parent folder.
- 2 Enter the `commit` command. Optionally enter the IDs of one or more Dimensions CM change requests as part of a comment in this format: [CR1,CR2]. For example:

```
svn commit -m "[QLARIUS_CR_21,QLARIUS_CR_36] your comment " --username  
<user ID> --password <password>
```

## View File Annotations

Use the Subversion *blame* command to view an annotated copy of a file and display the users who modified each line of code and when, for example:

```
svn blame "http://<web server>:8080/cmbridge/QLARIUS/JAVA_BRANCHA_STR/  
MyNewFile.txt" --username <user ID> --password <password>
```

The command lists which repository version last changed each line and the user who made the change, for example:

```
211      DMSYS This is the first line of the file  
213      EMMA Emma added this line  
213      EMMA and this line too  
211      DMSYS this is the last line
```

## Use SVN Properties

You can use SVN properties to create a link between folders so that the work area for one stream can use content from another stream.

- 1 Use the `checkout` command to get the content of the first stream:

```
svn checkout "http://<web server>:8080/cmbridge/QLARIUS/  
JAVA_BRANCHA_STR" --username <user ID> --password <password>
```

- 2 Use the `propset` command to set the `svn:externals` property on a folder in the first stream to point to a folder in the second stream:

```
svn propset svn:externals "<URL of shared folder > <folder name in  
work area>" "<folder location in work area>"
```

For example:

```
svn propset svn:externals "http://<web server>:8080/cmbridge/APPS/  
QUICK_QUOTE/Shared MyApps" "Qlarius_Underwriter"
```

This command links the folder *Shared* from the *APPS:QUICK\_QUOTE* stream to the subfolder *MyApps* in the folder *Qlarius\_Underwriter* in the stream that you have checked out on disk.

- 3 Use the `commit` command to deliver the property change:

```
svn commit -w "Linked the Shared folder"
```

- 4 Update your working copy or checkout the stream to an empty folder, for example:

```
svn checkout "http://<web server>:8080/cmbridge/QLARIUS/  
  JAVA_BRANCHA_STR" --username <user ID> --password <password>
```

The folder *Qlarius\_Underwriter* is checked out and the externals are fetched to the correct location on disk.



You can also use SVN properties to set and modify the properties for any file or folder from the Subversion command line.

- 1 Use the `checkout` command to get the content of the stream.
- 2 Use the `propset` command to set a custom property on a file in the stream:

```
svn propset <property> "<value>" "<URL of file>"
```

For example, to set the custom property 'complexity' to 'high' on the file *MyNewFile.txt* in the stream *JAVA\_BRANCHA\_STR*:

```
svn propset complexity "high" http://<web server>:8080/cmbridge/  
  QLARIUS/JAVA_BRANCHA_STR/MyNewFile.txt
```

- 3 Use the `commit` command to deliver the change:

```
svn commit -m "Set Complexity to High" --username <user ID> --  
  password <password>
```

