



UFT One

Software Version: 15.0-15.0.2

Installation Guide

Go to **HELP CENTER ONLINE**

<http://admhelp.microfocus.com/uft/>

Legal Notices

Disclaimer

Certain versions of software and/or documents (“Material”) accessible here may contain branding from Hewlett-Packard Company (now HP Inc.) and Hewlett Packard Enterprise Company. As of September 1, 2017, the Material is now offered by Micro Focus, a separately owned and operated company. Any reference to the HP and Hewlett Packard Enterprise/HPE marks is historical in nature, and the HP and Hewlett Packard Enterprise/HPE marks are the property of their respective owners.

Warranty

The only warranties for products and services of Micro Focus and its affiliates and licensors (“Micro Focus”) are set forth in the express warranty statements accompanying such products and services. Nothing herein should be construed as constituting an additional warranty. Micro Focus shall not be liable for technical or editorial errors or omissions contained herein. The information contained herein is subject to change without notice.

Restricted Rights Legend

Contains Confidential Information. Except as specifically indicated otherwise, a valid license is required for possession, use or copying. Consistent with FAR 12.211 and 12.212, Commercial Computer Software, Computer Software Documentation, and Technical Data for Commercial Items are licensed to the U.S. Government under vendor's standard commercial license.

Copyright Notice

© Copyright 1992 - 2021 Micro Focus or one of its affiliates.

Contents

| | |
|---|----|
| UFT One | 1 |
| Installation overview | 6 |
| Installed components | 6 |
| Additional UFT One components | 6 |
| Before you install | 8 |
| Required access permissions | 10 |
| Required permissions for UFT One | 10 |
| Required permissions for ALM | 11 |
| Required permissions for BPT | 11 |
| UFT One program use | 13 |
| Licensing | 13 |
| Demo applications | 13 |
| Accessibility | 14 |
| Unicode Compliance | 14 |
| Enterprise deployment | 15 |
| UFT and User Account Control (UAC) | 15 |
| Stingray or Terminal Emulator Add-ins | 15 |
| Upgrade UFT One | 17 |
| Before you upgrade | 17 |
| Perform your upgrade | 17 |
| Notes for upgrading | 17 |
| Install UFT One | 20 |
| Installation prerequisites | 20 |
| Download the installation files | 21 |
| Install UFT One with the install wizard | 23 |
| Run the installation wizard | 23 |
| UFT One improvement program | 23 |
| Change the language of the UFT One interface | 24 |
| Custom Setup screen | 24 |
| UFT One Configuration screen | 26 |
| Install Web 2.0 add-ins or extensibility toolkits | 27 |
| UFT One silent installation | 29 |
| Before running a silent installation | 29 |

| | |
|---|----|
| Install UFT One silently | 29 |
| Silent commands for installing UFT One prerequisites | 30 |
| Silent commands for installing individual UFT One features | 33 |
| Set UFT One remote configuration options | 37 |
| Additional silent installation commands | 38 |
| Install a lighter version of UFT One | 39 |
| Verify the installation | 42 |
| Run the UFT One Installation Validation Tool analysis | 42 |
| Understanding a UFT One Installation Validation Tool report | 42 |
| | |
| Known issues when installing | 44 |
| Previous UFT One versions | 44 |
| Files in use | 44 |
| Component registration failed | 45 |
| UFT One installations and other ADM software | 45 |
| UFT One installations and Microsoft software | 46 |
| UFT One installations and the Micro Focus UFT Agent (browser support) | 48 |
| UFT installations and 64-bit applications | 48 |
| UFT One installations and Java | 49 |
| | |
| UFT One licensing | 50 |
| UFT license types | 50 |
| View license information | 50 |
| AutoPass License server | 50 |
| Seat vs. concurrent licenses | 52 |
| Seat licenses | 52 |
| Concurrent licenses | 52 |
| License editions | 54 |
| Supported license editions | 54 |
| Upgrading licenses from before UFT 14.00 | 55 |
| Licensing fallback mechanism | 55 |
| Manage licenses with the wizard | 58 |
| Manage licenses with the command line | 63 |
| Run the License Installer from the command line | 63 |
| Define seat licenses with the command line | 63 |
| Consume concurrent licenses with the command line | 64 |
| Configure license behavior | 66 |
| General license settings | 66 |
| Configure the licensing fallback mechanism | 66 |
| Configure licensing timeouts | 67 |
| Licensing FAQs | 69 |
| UFT One Help Center licensing scope | 69 |

| | |
|---|-----------|
| Can I use my old license (from before UFT One 12.50) with the new License Server? | 69 |
| Which license should I install? | 70 |
| How do I install the AutoPass License Server? | 70 |
| If I am using concurrent licenses, how do I connect to the License Server? | 70 |
| How do I install licenses if I am deploying UFT One across an enterprise network? | 71 |
| How do I manage the concurrent licenses on the License Server? | 71 |
| Can I configure license behavior myself? | 71 |
| Can I set up my License Server to work with a redundant (backup) License Server? | 71 |
| Can I use the AutoPass License Server with a proxy? | 71 |
| What is a cleanup license? | 72 |
| My demo license is expiring early. What can I do? | 72 |
| Known issues with UFT One licensing | 73 |
| | |
| Before connecting to ALM | 75 |
| When to run this procedure | 75 |
| Microsoft Windows 7 and Windows Server 2008 R2 | 75 |
| For Microsoft Windows 8.x and Windows Server 2012 | 76 |
| For Microsoft Windows 10 | 76 |
| Enable UAC again if required | 76 |
| | |
| Send Us Feedback | 77 |

Installation overview

This guide provides details about how to install UFT One from the full installation package, or a compressed, lighter installation package.

This guide covers UFT One versions 15.0 through 15.0.2. Any specific changes are indicated where relevant.

Note: The information in this guide is also available in the [UFT One Online Help Center](#).

This chapter includes:

| | |
|---|---|
| • Installed components | 6 |
| • Additional UFT One components | 6 |
| • Before you install | 8 |

Installed components

In either package, installing UFT One provides core UFT One features, the Run Results Viewer, and the following mandatory GUI testing add-ins:

- **Web**
- **Standard Windows**
- **Mobile**

Select additional add-ins during installation, as needed.

Web 2.0 add-ins and extensibility toolkits must be installed separately from the full installation package, after the UFT One installation is complete.

The **lighter installation package** provides the UFT One setup program only.

The **full installation package** provides the UFT One setup program, as well as additional setup programs for UFT One components. To install an additional component, select it from the UFT One installation wizard **Startup** screen.

Note: When downloading the [UFT One installation files](#), these packages are provided in separate downloads. The full package is a ***.zip** file and the light package is a self-extracting ***Setup.exe** file.

Additional UFT One components

The **full installation package** provides the UFT One setup program, as well as additional setup programs for UFT One components. To install an additional component, select it from the UFT One installation wizard **Startup** screen.

Additional UFT One components include:

| Component | Description |
|---------------------------------|---|
| UFT One Add-in for ALM | <p>Enables UFT One to communicate with ALM and run tests or components from ALM.</p> <p>Install the standalone version only if UFT One is not installed on the computer.</p> <p>To install this together with UFT One, select to install it while installing UFT One. If you did not install this originally with UFT One, and want to later on, run the installation wizard again. Select Change, and then select ALM Plugin in the Custom Setup screen.</p> |
| Extensibility SDKs | <p>Enable you to develop support for Java, .NET, WPF, Silverlight, or Web object not supported by UFT One by default.</p> |
| Web 2.0 Toolkit Support | <p>Enables you to recognize and use objects in your test from Web 2.0 technologies, including:</p> <ul style="list-style-type: none">• ASP .NET Ajax• Dojo• GWT (Google Web Toolkit)• jQueryUI• Salesforce Lightning• SiebelOpenUI• EXT-JS• YahooUI <p>Web 2.0 Toolkits appear in UFT One as GUI Add-ins.</p> |
| License server setup | <p>Enables you to install the AutoPass License Server, which is used to install and manage UFT One concurrent and commuter licenses.</p> <p>For details, see "UFT One licensing" on page 50 and the AutoPass License Server online documentation.</p> |
| Run Results Viewer setup | <p>Enables you to install a standalone version of the Run Results Viewer.</p> <p>Install the standalone version only if UFT One is not installed on the computer.</p> |

| Component | Description |
|----------------------------|---|
| UFT Developer setup | <p>Enables you to install UFT Developer, a functional testing tool that enables you to code tests directly from your developer IDE.</p> <ul style="list-style-type: none">• Install the standalone version only if UFT One is not installed on the computer.• To install this together with UFT One, select to install it while installing UFT One. If you did not install this originally with UFT One, and want to later on, run the installation wizard again. Select Change, and then select the UFT Developer in the Custom Setup screen.• You must install Node.js 4.1.2 before installing UFT Developer: https://nodejs.org/en/download/ <p>For more details, see the <i>UFT Developer Readme</i>.</p> |

Note: Unless otherwise specified, references to **Application Lifecycle Management** or **ALM** apply to all currently supported versions of ALM and Quality Center.

Some features and options may not be supported in the specific edition of ALM or Quality Center that you are using.

Before you install

Caution: UFT One can potentially be used to record user actions and/or network communications. Therefore, we strongly recommend running UFT One on dedicated test machines that do not contain or provide access to sensitive information. Additionally, you should thoroughly review your lab network topology and access permissions before using UFT One.

Before installing, perform the following steps:

- Ensure that you have required permissions, as listed in "[Required access permissions](#)" on page 10.
- If you are installing in an **enterprise** environment, review "[Enterprise deployment](#)" on page 15.
- If you are **upgrading**, review "[Upgrade UFT One](#)" on page 17 for specific steps that may apply to you.
- Review any known issues, as listed in "[Known issues when installing](#)" on page 44 and "[Known issues with UFT One licensing](#)" on page 73.
- **UFT One 15.0 or earlier:** If you do not plan to use [Extensibility Accelerator for Functional Testing](#), delete the `prerequisites\vs2008_shell_sp1_isolated_redist` folder from the UFT One downloaded package. This folder installs the Visual Studio 2008 Shell (isolated mode) with SP1 Redistributable

Package, which can trigger security software warnings because it is no longer supported by Microsoft.

For more details, see ["Installation prerequisites" on page 20](#).

 **See also:**

- ["Install UFT One" on page 20](#)
- ["UFT One program use" on page 13](#)
- ["UFT One licensing" on page 50](#)
- ["Before connecting to ALM" on page 75](#)

Required access permissions

Verify the following access permissions before you start running UFT One, or working with UFT One and ALM or BPT.

This chapter includes:

- [Required permissions for UFT One](#)10
- [Required permissions for ALM](#)11
- [Required permissions for BPT](#)11

Required permissions for UFT One

Required file system permissions

| | |
|---------------------------------|---|
| Read/write permissions | <p>You must have read/write permissions to the following files and folders, as well as any sub-folders:</p> <ul style="list-style-type: none">• The Windows\System32 folder• The Temp folder• The folder containing UFT One solutions, tests, or run results• The <Program Data>\Hewlett-Packard folder• User Profile folders• The <Windows>\mercury.ini file• The following AppData folders: %userprofile%\AppData\Local\HP %appdata%\Hewlett-Packard %appdata%\HP |
| Read/execute permissions | The UFT One installation folder |
| Read permissions | <p>You must have read permissions to the following folders:</p> <ul style="list-style-type: none">• The Windows folder• The System folder |

Required registry key permissions

| | |
|---|---|
| Read/write permissions | All keys under: <ul style="list-style-type: none">• HKEY_CURRENT_USER\Software\Mercury Interactiveor• [HKEY_LOCAL_MACHINE\SOFTWARE\Wow6432Node\Hewlett-Packard]• HKEY_CURRENT_USER\SOFTWARE\Hewlett Packard |
| Read and Query Value permissions | <ul style="list-style-type: none">• HKEY_LOCAL_MACHINE keys• HKEY_CLASSES_ROOT keys |

Note: Some folder paths intentionally include previous company branding, due to backward compatibility considerations.

Required permissions for ALM

| | |
|-----------------------------------|---|
| Read/write permissions | <ul style="list-style-type: none">• ALM cache folder• <Program Data>\HP folder• UFT One Add-in for ALM installation folder |
| Administrative permissions | For the first connection to ALM |

Required permissions for BPT

Ensure that you have the required ALM permissions before working with business components and application areas.

Component steps

To work with component steps in ALM, you must have the appropriate **Add Step**, **Modify Step**, or **Delete Step** permissions set.

You do not need **Modify Component** permission to work with component steps.

The **Modify Component** permission enables you to work with component properties (the fields in the component Details tab).

Parameters in ALM or other testing tools

To work with parameters in ALM or in a testing tool, you must have all the parameter task permissions set in ALM.

Application areas

To modify application areas, you must have the separate permissions for resources required for modifying components, and adding, modifying, and deleting steps.

All four permissions are required.

If one of these permissions is not assigned, you can open application areas only in read-only format.

UFT One program use

To check for software updates, patches, or service packs for UFT One, visit the [Software Support Site](#).

In this topic:

- ["Licensing" below](#)
- ["Demo applications" below](#)
- ["Accessibility" on the next page](#)
- ["Unicode Compliance" on the next page](#)

Licensing

Working with UFT One requires a license. When you install UFT One, you select one of the following license types:

- A permanent **seat** license that is specific to the computer on which it is installed.
Note: The UFT One trial installation includes a 30-day demo seat license (60 days in UFT One 15.0).
- A network-based **concurrent** license that can be used by multiple UFT One users

You can change your license type at any time (as long as you are logged in with administrator permissions on your computer). For example, if you are currently working with a seat license, you can choose to connect to a concurrent license server, if one is available on your network.

For information on modifying your license information, see the UFT One Installation Guide.

Note: You can also open UFT One using a legacy license, although the functionality will be limited to the service that you are licensed to use. For example, you can open UFT One using a legacy QuickTest Professional or Service Test license and access GUI testing or API testing functionality.

Demo applications

Many examples in this guide use the Advantage Online Shopping sample web site. The URL for this web site is: <https://www.advantageonlineshopping.com/#/>.

Note that you must register a user name and password to use this site.

A sample Flight Windows-based application is also provided with the UFT One installation. You can access it from:

- **Start > Micro Focus > Flight API or Flight GUI**
- **<UFT One installation folder>/samples/Flights Application/FlightsGUI.exe** (for the Flight GUI application)

- **<UFT One installation folder>/samples/Flights Application/FlightsAPI.exe** (for the Flight API application)
- **Windows 8 and higher:** C:\Program Files (x86)\Micro Focus\Unified Functional Testing

Accessibility

Many operations are performed using the mouse.

In accordance with Section 508 of the W3C accessibility standards, UFT One also recognizes operations performed using the **MouseKeys** option in the Windows Accessibility Options utility.

Additionally, you can perform many operations using shortcut keys.

Unicode Compliance



UFT One is Unicode compliant according to the requirements of the [Unicode standard](#), enabling you to test applications in many international languages.

Test non-English language applications as long as the relevant Windows language support is installed on the UFT One computer.

Names and paths of tests and resources (for example, function libraries, object repositories, and recovery scenarios) are not Unicode compliant and therefore should be specified in English or in the language of the operating system.

Enterprise deployment

When installing UFT One in an enterprise business model across many computers in a network or company, ensure that you have administrator permissions on each computer.

UFT One also supports silent installations. For details, see "[UFT One silent installation](#)" on page 29.

This chapter includes:

- [UFT and User Account Control \(UAC\)](#)15
- [Stingray or Terminal Emulator Add-ins](#)15

UFT and User Account Control (UAC)

You do not need to turn off the computer's User Account Control (UAC).

For users to connect to ALM from UFT One for the first time without turning off UAC, you must also install the ALM client MSI file on each machine.

Generate a custom MSI for all your users with the [ALM Client MSI Generator](#). This tool enables you to configure the settings for your ALM servers before installing the client-side MSI.

Configure the settings for a custom MSI, as described in the user guide provided with each MSI Generator version.

Note: When configuring the settings, select the **Check Include Component Registration** and **Use Shared Deployment Mode** options.

Stingray or Terminal Emulator Add-ins

If your users are using either the Stingray or Terminal Emulator add-ins, there are additional configurations you or the user must perform after installing UFT One.

Both the Stingray and Terminal Emulator Add-ins

Run the Additional Installation Requirements after the main installation on each computer.

This tool is found in the **Start** menu (**Start > All Programs > Micro Focus > Micro Focus Unified Functional Testing > Tools > Additional Installation Requirements**).

In the Additional Installation Requirements, select the **Run Stingray Wizard** and/or **Run Terminal Emulator Wizard** options, and follow the configuration wizard steps to set up the add-ins.

Stingray Add-in

After installing UFT One, users must run the Stingray Support Configuration Wizard from inside UFT One: **Tools > Options > GUI Testing** tab > **Stingray** pane > **Select Version**.

This configuration requires no administrative permissions.

Terminal Emulator Add-in

After installing UFT One, users must run the Terminal Emulator configuration wizard from inside UFT One: **Tools > Options > GUI Testing** tab > **Terminal Emulator** pane > **Open Wizard**

Users must have administrator permissions to run this wizard.

You can also run the wizard once, and then save the settings to a registry file that can be deployed on all computers, as follows:

1. In the final screen of the Terminal Emulator Wizard, select the **Save terminal emulator settings to file** option.

Note: Ensure that you record the vendor name and emulator name assigned to the configuration, as well as the exact location of the **.reg** file.

2. Copy the file to the **<UFT One installation folder>\dat** folder on your computer.
3. Double-click the registry file to open the Registry Editor message box.
4. Click **Yes** to add the information into the registry. A message opens confirming that the information has been copied into the registry.
5. Click **OK**. The emulator name assigned to this configuration is added to the list of available terminal emulators for your UFT One installation.

Upgrade UFT One

You can upgrade directly to the most recent version of UFT One from any previous version of UFT One, or from Service Test 11.50.

For other upgrades, including versions of QuickTest or Service Test versions earlier than 11.50, manually uninstall QuickTest or Service Test, and then install UFT One.

This chapter includes:

- [Before you upgrade](#)17
- [Perform your upgrade](#)17
- [Notes for upgrading](#)17

Before you upgrade

UFT One versions 15.0 and later use a newer version of the .NET Framework (4.8) than earlier UFT One versions.

If you are upgrading from a version earlier than 15.0, consult the [Product Availability Matrix](#) to make sure that your operating system is compatible with the new version.

Perform your upgrade

Do the following to upgrade UFT One:

1. Download the installation files for your new version: <https://www.microfocus.com/en-us/products/uft-one/download>.
2. Restart your system ensure complete configuration for the system.
3. Run the **UFT One_<VersionNumber>_Setup.exe** file to upgrade using the installation wizard. Alternately, update your silent installation scripts to use the newly downloaded files.

Note: Upgrades retain **Run Session** and **Startup** options only. Redefine all other settings as needed.

Notes for upgrading

The following items address issues when upgrading in specific situations. Read the instructions for any of the situations that are relevant for your upgrade.

- ["Upgrade silent installation scripts" on the next page](#)
- ["Upgrade licenses" on the next page](#)
- ["Upgrade with a concurrent license" on the next page](#)
- ["Upgrade with Web tests on Microsoft Edge" on the next page](#)

- ["Upgrade with Web tests on Safari" on the next page](#)
- ["Upgrade with text recognition options in automation scripts" on the next page](#)
- ["Upgrade after using UFT One and ALM" on the next page](#)
- ["Upgrade with the QTPNET_00015 patch" on the next page](#)
- ["Upgrade from QuickTest Professional 11.00" on the next page](#)

Upgrade silent installation scripts

If you are upgrading your silent installation scripts, and the current scripts including the **Help_Documents** parameter, remove this parameter from your scripts. Help documents are no longer installed with UFT One.

Instead, access our Help Center online, or download it to your local drive. Download the Help from the Options dialog box (**Tools** > **Options** > **General** tab > **Help**).

Upgrade licenses

If you are upgrading from QuickTest, Service Test, or a version of UFT One earlier than 12.50, you must get a new license.

In addition, you can also upgrade your license to the new Functional Testing licenses: UFT Ultimate, UFT One, and UFT Developer. This step is not required.

For assistance, contact a [regional licensing support center](#) or your sales representative.

Upgrade with a concurrent license

UFT One supports the AutoPass License Server as its concurrent license server.

If you are upgrading to UFT One with a concurrent license, you must also upgrade your concurrent license server and install your licenses on the AutoPass License Server.

For details, see the [AutoPass License Server online documentation](#).

Note: If you are installing UFT One from the compressed package for the Web, this link is not available. If you need to install UFT One and the License Server, you must install UFT One from the full installation package.

Upgrade with Web tests on Microsoft Edge

UFT One has changed the way that the Microsoft WebDriver program (required for the Micro Focus UFT Agent for Edge) is used. For details on the required steps to perform, see [the topic on using the Edge extension](#).

Upgrade with Web tests on Safari

If you used a previous version of UFT One to test Web applications on Safari, you must reinstall the UFT Connection Agent on the Mac from the current version of UFT One.

The UFT Connection Agent preferences and the Unified Functional Testing Agent Safari extension preferences are reset to their defaults.

Upgrade with text recognition options in automation scripts

If you are running UFT One with an automation script and have added text recognition options to the script, the following properties are obsolete and must be updated:

| Update | To |
|---------------------------------|-----------------------------|
| TextRecognitionLanguages | AbbyyOcrLanguages |
| TextRecognitionOrder | TextRecognitionOcrMechanism |

Upgrade after using UFT One and ALM

If you upgrade to UFT One from a version of UFT One earlier than 12.50 shortly after using UFT One to run GUI tests from ALM, make sure to stop the Remote Agent (if running) before running tests from ALM again.

To stop the previous Remote Agent process, in the Windows system tray, right-click the Remote Agent icon and select **Exit**.

Upgrade with the QTPNET_00015 patch

If you install UFT One while the **QTPNET_00015** patch (a QuickTest 10.00 patch) is installed on your computer, UFT One may behave unexpectedly.

Before installing UFT One, remove the patch from the Windows Control Panel Add/Remove Programs dialog box.

Upgrade from QuickTest Professional 11.00

When upgrading from QuickTest Professional 11.00 and installing UFT One into the same directory as QuickTest, certain files will be missing from the installation.

After the upgrade, run the UFT One installation again and select the **Repair Installation** option.

Install UFT One

This section describes how to install UFT One, starting with prerequisites and downloading the installation files.

This chapter includes:

- [Installation prerequisites](#)20
- [Download the installation files](#) 21

Installation prerequisites

Before installing, see ["Before you install" on page 8](#) in the overview and also verify the following prerequisites:

| Prerequisite | Description |
|----------------------------|--|
| Permissions | Verify that you are logged on to your machine with the relevant access permissions. For details, see "Required access permissions" on page 10 . |
| Install location | Select the location where you want to install UFT One. Do not install UFT One on a network drive. The installation path, and the path to the installation files, must include English characters only. |
| Computer state | Ensure that your computer does not need to be restarted. |
| System requirements | Ensure that your computer meets all minimum system requirements listed in the Product Availability Matrix . |
| Internet access | If you are installing the UFT One compressed installation package for the Web, ensure that you have Internet access. |
| Upgrades | If you are upgrading, check any relevant prerequisites described in "Upgrade UFT One" on page 17 . |
| Licenses | Know which type of license you are using. If you are using a concurrent license, have the license server URL available. For more details, see "UFT One licensing" on page 50 . |

| Prerequisite | Description |
|----------------------------|--|
| GUI testing add-ins | Know which add-ins you want to use for GUI testing. We recommend installing only those you expect to use. |
| API testing | <p>If you plan to run web service testing using WSE security settings, you must have the .NET Framework 3.5, WSE 2.0sp3 package, and WSE 3.0 package installed on your computer.</p> <p>The .NET 3.5 Framework and WSE packages are not installed with the UFT One installation. If they are not installed on your computer, you can install them by following the instructions below:</p> <ol style="list-style-type: none">1. Install and activate .NET 3.5 Framework. See the instructions in the MSDN: https://msdn.microsoft.com/en-us/library/hh506443(v=vs.110).aspx.2. Download WSE 2.0 sp3 and WSE 3.0 packages from the Micro Focus Marketplace :https://marketplace.microfocus.com/appdelivery/content/uft-one-installation-prerequisites and install them. <p>Note: In Windows 10, Microsoft no longer officially supports WSE. For details on installing these prerequisites using the silent installation commands, see "Silent commands for installing UFT One prerequisites" on page 30.</p> <p>Note: If you use WCF for secure Web Service testing, these prerequisites are not necessary. For details, see Customize security for WCF-type Web services.</p> |

Download the installation files

Access the UFT One installation files here: <https://www.microfocus.com/en-us/products/uft-one/download>

Select the installation package that you want to install:

- For the full installation package, select the ***.zip** file.
Manually extract the installation files in this **.zip** file to locate the **Setup.exe** file that runs the installation.
- For the lighter, compressed package select the ***Setup.exe** file.
When you run this file, it self-extracts, providing the necessary installation files, and then performs the installation.

For more details, see ["Installed components" on page 6](#).



Caution: Make sure that the installation files are extracted to a location whose path does not exceed 80 characters.

Windows is limited to 260 characters in these files. The installation will fail if the file paths of the individual installation files is longer. In such cases, move the extracted installation files to a location with a shorter path.



Next steps:

- ["Install UFT One with the install wizard" on page 23](#)
- ["UFT One silent installation" on page 29](#)
- ["Verify the installation" on page 42](#)

Install UFT One with the install wizard

This topic describes how to run the UFT One installation wizard, which guides you through the installation process.

If you are installing UFT One on a computer using a language other than English, your installation setup and wizard automatically runs in the language of your computer.

This chapter includes:

- [Run the installation wizard](#) 23
- [UFT One improvement program](#) 23
- [Change the language of the UFT One interface](#) 24
- [Custom Setup screen](#) 24
- [UFT One Configuration screen](#) 26
- [Install Web 2.0 add-ins or extensibility toolkits](#) 27

Run the installation wizard

Before the installation, restart your computer to ensure complete configuration of the system.

Then, run the **Setup.exe** file, and select **Unified Functional Testing Setup**. Follow the steps as instructed to complete your installation.

For more details, see:

- ["UFT One improvement program" below](#)
- ["Custom Setup screen" on the next page](#)
- ["UFT One Configuration screen" on page 26](#)

When the UFT One installation is complete, you are prompted to view the **Readme** and installation log.

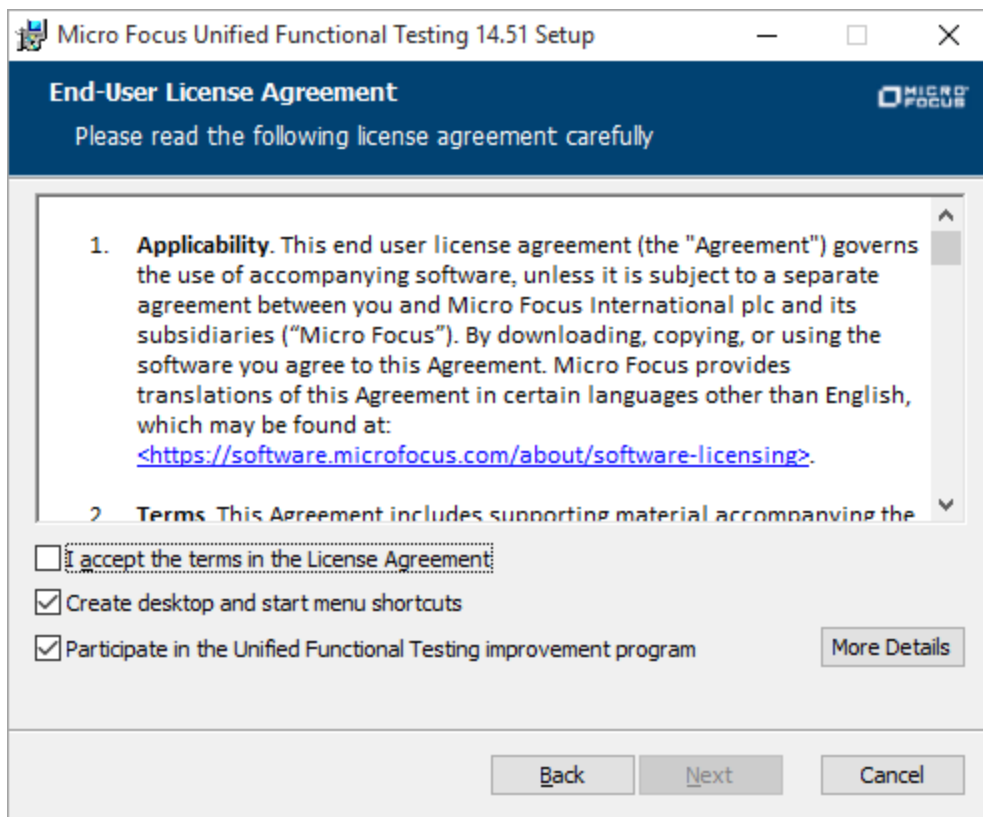
You may also be prompted to restart your computer. If you are, we recommend restarting as soon as possible. Delaying the system restart may result in unexpected UFT One behavior.

Note: If you are using Web 2.0 add-ins or extensibility toolkits, perform additional installations. For details, see ["Install Web 2.0 add-ins or extensibility toolkits" on page 27](#).

UFT One improvement program

In the End-User License Agreement pane, UFT One enables you to select to participate in the UFT One improvement program.

Selecting this option configures UFT One to collect and send usage data back to Micro Focus. This data helps us understand which improvements matter most to our users.



In the wizard, click **More Details** for details about the program.

Note: You can later disable and re-enable this data collection inside UFT One. For more details, see [Usage Data Collector pane](#) in the UFT One Help Center.

Change the language of the UFT One interface

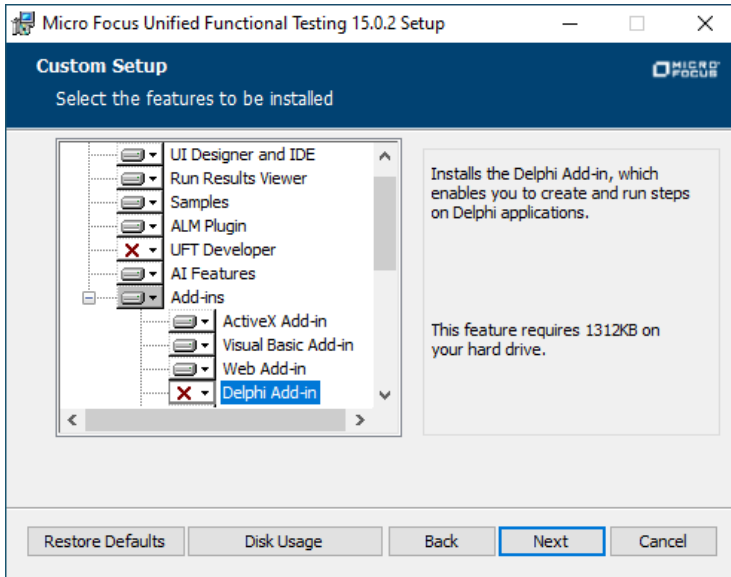
By default, UFT One is installed in English.

If you want to install UFT One in the language of your operating system, select the language option at the bottom of the License Agreement screen.

Custom Setup screen

Select the UFT One features you want to install in the Custom Setup screen.

For example:



For each feature, select one of the following installation options:

| | |
|--|---|
| | <p>Will be installed on local hard drive.</p> <p>Installs the selected feature on your local hard drive. Sub-features of the selected feature are not installed.</p> |
| | <p>Entire feature will be installed on local hard drive.</p> <p>Installs the entire selected feature and its sub-features on your local hard drive.</p> <p>For example, you can instruct UFT One to install the .NET Add-in with its sub add-ins, Silverlight and Windows Presentation Foundation.</p> |

Note: Selecting **Entire feature will be unavailable.** excludes the feature from the installation. It will not be available in UFT One.

The following table describes each feature listed:

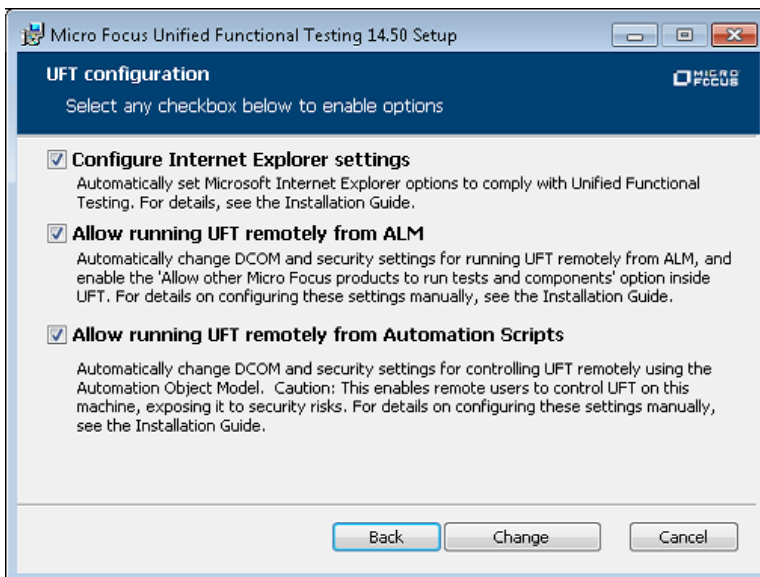
| Feature | Description |
|----------------------------|---|
| Runtime Engine | Mandatory. Enables you to run UFT One or UFT Developer tests. |
| UI Designer and IDE | Enables you to edit UFT One tests. |

| Feature | Description |
|----------------------------|---|
| Run Results Viewer | Enables you to view UFT One or UFT Developer run results. Alternatively, you can view run results in a browser window without the Run Results Viewer. |
| Samples | Demo applications used in the UFT One tutorials. |
| ALM Plugin | Enables you to run and edit UFT One tests directly from ALM. |
| UFT Developer | Enables you to create functional tests directly from your developer IDE. |
| AI Features | Enables you to use AI-based testing in UFT One. Note: Supported only on 64-bit operating systems and in UFT One versions 15.0.2 and later. |
| GUI Testing Add-ins | Provide the support which enable you to test applications using supported technology versions. You must install the Web Add-in to test applications based on Web 2.0 technologies. |

UFT One Configuration screen

Select any required items you want to configure automatically with the UFT One installation.

For example:



Configuration options include:

| | |
|--|---|
| Configure Internet Explorer settings | Enables UFT One to use the Microsoft Script Debugger application during test runs. Alternatively, configure these settings manually before running UFT. In Internet Options > Advanced , select the following options: <ul style="list-style-type: none">• Disable script debugging• Enable third-party browser extensions |
| Allow running UFT One remotely from ALM | Changes DCOM permissions and security settings and opens a firewall port on your UFT One computer. Required if you are running UFT One on Windows 7, and want to run UFT One tests remotely from ALM. To set these options manually later on, see https://softwaresupport.softwaregrp.com/km/KM02239325 |
| Enable running UFT One remotely from Automation Scripts | Changes DCOM permissions and security settings to enable other computers to remotely control UFT One using automation scripts. To set these options manually later on, see https://softwaresupport.softwaregrp.com/km/KM02239325 |

Caution: Running UFT One remotely from Automation Scripts enables remote users to control UFT One on this machine, exposing the UFT One computer to security risks.

Install Web 2.0 add-ins or extensibility toolkits

You must perform an additional installation to use Web 2.0 add-ins or extensibility toolkits.

- Web 2.0 add-ins enable you to test HTML user-interface objects (controls) in Web 2.0 environments. For a list of available Web 2.0 add-ins, see [Web 2.0 Add-ins in the UFT One Online Help](#).
- Extensibility toolkits enable you to develop support for add-in objects not currently supported by UFT One add-ins.

Note: This installation is available only if you installed UFT One from the full installation package.

To install Web 2.0 add-ins or extensibility toolkits

1. Run the UFT installation wizard.

In the UFT One installation start screen, select the **Add-in Extensibility and Web 2.0 Toolkits** option.

2. In the **Unified Functional Testing Add-in Extensibility and Web 2.0 Toolkit support** page, select the Extensibility SDK or Web 2.0 Toolkits installation option that you want.
3. Follow the steps in the wizard to complete your installation.

After your installation, the toolkit files and Extensibility SDKs are found in the **<UFT installation>\dat\Extensibility** folder.

Web 2.0 add-ins are displayed as child add-ins to the Web Add-in in the Add-in Manager when starting UFT One.

UFT One silent installation

You can install UFT One and the ALM Add-in silently on your computer or a remote computer.

This chapter includes:

- [Before running a silent installation](#)29
- [Install UFT One silently](#)29
- [Silent commands for installing UFT One prerequisites](#)30
- [Silent commands for installing individual UFT One features](#)33
- [Set UFT One remote configuration options](#)37
- [Additional silent installation commands](#)38
- [Install a lighter version of UFT One](#)39

Before running a silent installation

Check the list of UFT One installation prerequisites and download the UFT One package that you want to install. For details, see "[Install UFT One](#)" on page 20 .

Before installing silently:

- **Verify** that you have administrator privileges.
- **Save** any open files and close all open applications.
- **Restart** your system to ensure a complete system configuration.
- Note that silent installation commands are **case-sensitive** and should be entered exactly as listed.

Installation file location:

All of the silent installation commands below run programs from the **<UFT One Installation files>** folder.

These are the files available after you download the UFT One installation package and extract it:

- Full installation package: You downloaded a **.zip** file and extracted it.
- Lighter installation package: You downloaded a **Setup.exe** file and ran it to extract the package content.

Install UFT One silently

Run the `msiexec` command to install UFT One using the following syntax.

If you do not specify an installation folder, UFT One is installed in the default installation folder.

64-bit

```
msiexec /i "<UFT One Installation files>\Unified Functional  
Testing\MSI\Unified_Functional_Testing_x64.msi" /qb
```

32-bit

```
msiexec /i "<UFT One Installation files>\Unified Functional  
Testing\MSI\Unified_Functional_Testing_x86.msi" /qb
```

Other msiexec options are supported as well.

To repair an existing installation, use:

```
msiexec /q /fa "<UFT One Installation files>\Unified Functional  
Testing\MSI\Unified_Functional_Testing_x<64 or 86>.msi"
```

To uninstall the program, use:

```
msiexec /q /x "<UFT One Installation files>\Unified Functional  
Testing\MSI\Unified_Functional_Testing_x<64 or 86>.msi"
```

For more details, see:

- ["Silent commands for installing UFT One prerequisites" below](#)
- ["Silent commands for installing individual UFT One features" on page 33](#)
- ["Additional silent installation commands" on page 38](#)
- ["Install a lighter version of UFT One" on page 39](#)
- ["Set UFT One remote configuration options" on page 37](#)

Silent commands for installing UFT One prerequisites

Use the command syntaxes listed below to install UFT One prerequisites:

- ["Install all UFT One prerequisites" on the next page](#)
- ["Install .NET Framework 4.8" on the next page](#)
- ["Install Microsoft Access database engine 2016 " on the next page](#)
- ["Install Microsoft WSE 2.0 SP3 Runtime \(required only to run web service testing using WSE security settings\)" on the next page](#)
- ["Install Microsoft WSE 3.0 Runtime \(required only to run web service testing using WSE security settings\)" on page 32](#)

- ["Install Microsoft Visual C++ 2015 Redistributable" on the next page](#) (or later)
- ["Install Microsoft PDM installer" on the next page](#)

If you are only installing the UFT One Add-in for ALM or the UFT One Run Results Viewer, install a subset of these prerequisites. For details, see ["Install prerequisites for the UFT One Add-in for ALM or the UFT One Run Results Viewer" on page 33](#).



Note:

- Some items have different commands for different systems. Run the command most appropriate for your system.
- In Windows 10, Microsoft no longer officially supports WSE.

Install all UFT One prerequisites

```
<UFT One Installation files>\Unified Functional  
Testing\EN\setup.exe /InstallOnlyPrerequisite /s
```

Install .NET Framework 4.8

```
<UFT One Installation files>\prerequisites\dotnet48\ndp48-x86-  
x64-allos-enu.exe /q /norestart
```

Install Microsoft Access database engine 2016

```
<UFT One Installation  
files>\prerequisites\msade2016\AccessDatabaseEngine.exe /quiet
```

Install Microsoft WSE 2.0 SP3 Runtime (required only to run web service testing using WSE security settings)

Download the **.msi** from <https://marketplace.microfocus.com/appdelivery/content/uft-one-installation-prerequisites> and run the following command.

```
MicrosoftWSE2.0SP3Runtime.msi /quiet /norestart ALLUSERS=1
```

Install Microsoft WSE 3.0 Runtime (required only to run web service testing using WSE security settings)

Download the **.msi** from <https://marketplace.microfocus.com/appdelivery/content/uft-one-installation-prerequisites> and run the following command.

```
MicrosoftWSE3.0Runtime.msi /quiet /norestart ALLUSERS=1
```

Install Microsoft Visual C++ 2015 Redistributable

If you do not have the Microsoft Visual C++ 2015 Redistributable (or a later version) installed, use one of the following commands:

```
<UFT One Installation files>\prerequisites\vc2015_redist_x86\vc_redist_x86.exe /quiet /norestart
```

```
<UFT One Installation files>\prerequisites\vc2015_redist_x64\vc_redist_x64.exe /quiet /norestart
```

The Microsoft Visual C++ 2015 Redistributable requires a Microsoft update:

| | |
|--|---|
| Windows 7 | https://support.microsoft.com/en-us/kb/2999226 |
| Windows 8 Windows 8.1 Windows Server 2012 | https://support.microsoft.com/en-us/kb/2975061 , or the following: <ul style="list-style-type: none">• https://support.microsoft.com/en-us/kb/2919442• https://support.microsoft.com/en-us/kb/2919355• https://support.microsoft.com/en-us/kb/2932046• https://support.microsoft.com/en-us/kb/2937592• https://support.microsoft.com/en-us/kb/2938439• https://support.microsoft.com/en-us/kb/2934018• https://support.microsoft.com/en-us/kb/2999226 |

If the installation does not start due to missing KB files, check the **VC2015Prerequisite_YYYYMMDD_XXXXXX.log** file in the %TEMP% folder.

Install Microsoft PDM installer

Use one of the following commands:


```
<UFT One Installation files>\prerequisites\pdm\ScriptDebugging_
x86.msi /quiet /norestart
```

```
<UFT One Installation files>\prerequisites\pdm\ScriptDebugging_
x64.msi /quiet /norestart
```

Install prerequisites for the UFT One Add-in for ALM or the UFT One Run Results Viewer

Install the following prerequisites on your machine when installing only the UFT One Add-in for ALM or the UFT One Run Results Viewer:

- ["Install .NET Framework 4.8" on page 31](#)
- ["Install Microsoft Visual C++ 2015 Redistributable" on the previous page](#) (or later)

Silent commands for installing individual UFT One features

Use the ADDLOCAL MSI property in the silent installation command line to define specific UFT One features and add-ins that you want to install.

If you want to install only the UFT One core components, you do not need to use this option.

Note: When installing a feature using the ADDLOCAL property, its parent always is installed as well.

The following example installs UFT One Runtime Engine only.

```
msiexec /i "<UFT One Installation files>\Unified Functional
Testing\MSI\Unified_Functional_Testing_x64.msi" /qb
ADDLOCAL="Core_Components" INSTALLDIR="<UFT_Folder>" ALLOW_
OTHERSRUNTESTS=1
```

The following example performs a standard installation with the Java Add-in

```
msiexec /i "<UFT One Installation files>\Unified Functional
Testing\MSI\Unified_Functional_Testing_x64.msi" /qb
ADDLOCAL="Core_Components,IDE,Test_Results_Viewer,Samples,Java_
```

```
Add_in" INSTALLDIR="<UFT_Folder>">"
```

The following example performs a standard installation with Web and Java Add-ins and the DCOM configurations set.

```
msiexec /i "<UFT One Installation files>\Unified Functional  
Testing\MSI\Unified_Functional_Testing_x64.msi" /qb  
ADDLOCAL="Core_Components,Samples,Java_Add_in" CONF_DICOM=1  
INSTALLDIR="<UFT_Folder>"
```

For more details, see:

- ["Mandatory commands" below](#)
- ["Optional commands for UFT One core components" below](#)
- ["Commands for UFT Developer components" on the next page](#)
- ["Optional commands for UFT One Add-ins" on the next page](#)
- ["Install Web 2.0 Add-ins" on page 36](#)

Mandatory commands

| Command Syntax | Description |
|------------------------|--------------------------------------|
| Core_Components | Installs the UFT One Runtime Engine. |

Optional commands for UFT One core components

| Command Syntax | Description |
|----------------------------|--|
| IDE | Installs the UFT One user interface. |
| Test_Results_Viewer | Installs the Run Results Viewer. |
| Samples | Installs the sample applications included with the UFT One installation. |

| | |
|--------------------|---|
| AI Services | Installs UFT One's AI Features, supporting the AI-based testing capabilities in UFT One. Note: Supported only on 64-bit operating systems and in UFT One versions 15.0.2 and later. |
| ALM Plugin | Installs the UFT One Add-in for ALM. |

Commands for UFT Developer components

| Command Syntax | Description |
|--|--|
| UFTDeveloper_Engine | Installs the UFT Developer run-time engine. |
| UFTDeveloper_Client | Installs the UFT Developer client. |
| Vs2012Addin Vs2013Addin Vs2015Addin Vs2017Addin Vs2019Addin | Installs the UFT Developer Plugin for the relevant version of Microsoft Visual Studio. |
| IntelliJAddin | Installs the UFT Developer Plugin for IntelliJ IDEA. |
| EclipseAddin | Installs the UFT Developer Plugin for Eclipse. |
| ECLIPSE_INSTALLDIR | The path to your Eclipse IDE. |

Optional commands for UFT One Add-ins

Installs various UFT One add-ins:

- **ActiveX_Add_in**
- **Visual_Basic_Add_in**
- **Web_Add_in**
- **Delphi_Add_in**
- **Flex_Add_in**
- **Java_Add_in**
- **_Net_Add_in**
- **Silverlight_Add_in**

- **WPF_Add_in**
- **Oracle_Add_in**
- **PDF_Add_in** (Tech preview)
- **PeopleSoft_Add_in**
- **PowerBuilder_Add_in**
- **Qt_Add_in**
- **SAP_Solutions_Add_in**
- **SAP_eCATT_integration**
- **Siebel_Add_in**
- **Stingray_Add_in**
- **TE_Add_in**
- **VisualAge_Add_in**

Install Web 2.0 Add-ins

UFT One's Web 2.0 Add-ins, such as JQueryUI or Dojo, are supported as part of UFT One's Web extensibility.

Install Web 2.0 Add-ins using an msiexec command in the following syntax:

```
msiexec /qn /i "<UFT One Installation files>\Extensibility and  
Toolkits\Web2AddinSetup\Web2AddinSetup.msi"  
ADDLOCAL=ASPAjax,Dojo,GWT,jQueryUI,YahooUI,SiebelOpenUI,ExtJS,Salesforc  
eLightning
```

Include or exclude the specific ADDLOCAL commands for the Web 2.0 Add-ins you need.

Install a standalone UFT One Add-in for ALM

If you are installing UFT One, you cannot use the ADDLOCAL command to install the UFT One Add-in for ALM. Instead, see ["Silent commands for installing individual UFT One features" on page 33](#).

In the command line, run the msiexec command to install the UFT One Add-in for ALM, using the following syntax:

```
msiexec /i "<UFT One Installation files>\ALMPlugin\MSI\<ALM_Plugin_  
File>" /qn
```

For example:

```
msiexec /i "<UFT One Installation files>\ALMPlugin\MSI>\Unified_
Functional_Testing_Add-in_for_ALM.msi" /qn
```

Install localized versions of UFT One

By default, UFT One is installed in English.

To install UFT One in the language of your operating system, add the **PRODUCT_LOCALE** property to the **msiexec** command.

Make sure to use the command that matches your operating system language, otherwise UFT One is installed in English.

| OS Language | Command to install a localized UFT One |
|-------------|--|
| Chinese | PRODUCT_LOCALE="CHS" |
| French | PRODUCT_LOCALE="FRA" |
| German | PRODUCT_LOCALE="DEU" |
| Japanese | PRODUCT_LOCALE="JPN" |
| Russian | PRODUCT_LOCALE="RUS" |

The following example installs the Chinese version of UFT One with the .NET Add-in:

```
msiexec /i "<UFT One Installation files>\Unified Functional
Testing\MSI\Unified_Functional_Testing_x64.msi" /qb
ADDLOCAL="Core_Components,Samples,_Net_Add_in" PRODUCT_
LOCALE="CHS" INSTALLDIR="<UFT_Folder>"
```

Set UFT One remote configuration options

By default, the **Allow running UFT One remotely from ALM** and **Allow running UFT One remotely from Automation Scripts** options are not included. To set this option for a silent installation, set the value of each option to =1

| Option | Command |
|--|---------------------------|
| Configure Internet Explorer settings | CONF_MSIE |
| Allow running UFT One remotely from ALM | ALLOW_RUN_FROM_ALM |

| Option | Command |
|---|-------------------------------|
| Allow running UFT One remotely from Automation Scripts | ALLOW_RUN_FROM_SCRIPTS |

Caution: Running UFT One remotely from Automation Scripts enables remote users to control UFT One on this machine, exposing the UFT One computer to security risks.

By default, the silent installation does not configure DCOM settings required for remotely controlling UFT One using automation scripts.

To configure the DCOM settings for automation scripts, use the following syntax in your silent installation command:

```
ALLOW_RUN_FROM_ALM=1
ALLOW_RUN_FROM_SCRIPTS=1
```

Additional silent installation commands

| Command / Argument | Description |
|---------------------------------|--|
| ADDLOCAL | <p>(Optional) Instructs the silent installation to install specific UFT One features and add-ins. For more details and a list of available features, see "Optional commands for UFT One core components" on page 34.</p> <p>Note:</p> <ul style="list-style-type: none"> • This command is relevant for the UFT One core installation only. • If you do not use this argument, UFT One is installed with the default add-ins. • You must include Core_Components in the ADDLOCAL command. • Values must be separated by commas and must not contain spaces. |
| LICID=<license ID> | <p>(Optional) The license ID to specify when installing UFT One licenses. Default: 20528 (Functional Testing Concurrent User).</p> <p>Note: If you installed the UFT Developer feature when installing UFT One, using this feature requires license ID 10594 (UFT One Concurrent User) or 23078 (UFT Ultimate Concurrent User).</p> |

| Command / Argument | Description |
|-----------------------------------|---|
| LICSVR=<server name> | (Mandatory) The name or IP address of the license server to specify when installing UFT One licenses. |
| MsiFlags | (Optional) Any MSI options, flags, and other instructions that are not included in the MsiProperties arguments, such as logging commands. |
| MsiProperties | (Optional) Any MSI properties or parameters, such as INSTALLDIR . Each MSI property and its definition must be contained in quotes ("") and must not contain spaces. Note: You can use INSTALLDIR to specify the installation folder only when performing a new installation. When you run the silent installation in an upgrade scenario, UFT One is installed in the same location as the previous version. |
| ALM_Plugin | (Mandatory) The name of the MSI installation file. There is a different MSI file for each available user interface language. Note: This command is relevant for the UFT One Add-in for ALM installation only. |

Install a lighter version of UFT One

Make sure that when downloading the UFT One installation package, you selected the compressed installation package.

This package is a self-extracting installation package, which contains an MSI installation program.

Installing this version of UFT One includes the following steps:

1. Extract the installation package.
2. Run the MSI installation program to install UFT One.

Do one of the following, choosing the appropriate parameters for your command line:

- Run **UFT_One_<version>_Setup.exe** to extract the installation package and automatically run the MSI program.

This option does not install the UFT One prerequisites.

- Run **UFT_One_<version>_Setup.exe** only to extract the installation package then run the MSI program separately.

If you need to install prerequisites, use this option. After you extract the installation package and before you run the MSI installation, use the [silent commands for installing prerequisites](#).

Use the following commands to install the light version of UFT One:

| Command Syntax | Description |
|---|---|
| UFT_One_<version>_Setup.exe -y | Extracts the installation package and installs the lighter version of UFT One using a simple UI (a single dialog box with a progress bar only). |
| UFT_One_<version>_Setup.exe -y -gm2 | Extracts the installation package silently, and installs the lighter version of UFT One using the full installation wizard UI. |
| UFT_One_<version>_Setup.exe -InstallPath="c:\<path>" | Extracts the installation package to a specific target folder instead of the default. |
| UFT_One_<version>_Setup.exe -! <parameter list> | <p>Extracts the installation package and installs the lighter version of UFT One, passing the defined parameter values to the MSI installer.</p> <p>Possible parameters:</p> <ul style="list-style-type: none"> • /s. Do not present the prerequisite dialog box. Without this option, user intervention is required during installation to close this dialog box. • /qn. Install the lighter version of UFT One completely silently. • /!v "<custom log file location>.log". Generate the installation log file in a custom location; the default location is %temp%. • INSTALLDIR="<installation folder>". Install UFT One to a custom location (not relevant in upgrade scenario). • ADDLOCAL="components to install". For details, see "Additional silent installation commands" on page 38. |
| UFT_One_<version>_Setup.exe -ExecuteFile="" | <p>Extracts the installation package without running the UFT One installation.</p> <p>Once the extraction is complete, use the commands and options described in the earlier sections to install prerequisites, perform a silent UFT One installation, selecting the required add-ins and so on.</p> <p>Tip: In the silent installation commands, change <UFT One Installation files> to the folder where you extracted the installation content.</p> |

Examples:

Extract the package to the default location (**c:\temp**), but do not start the UFT One installation:


```
UFT_One_15.0.1_Setup.exe -y -ExecuteFile=""
```

Extract the package to the specified location (**c:\UFTinstall**) in silent mode, but do not start the UFT One installation:

```
UFT_One_15.0.1_Setup.exe -y -gm2 -InstallPath="c:\UFTinstall" -  
ExecuteFile=""
```

Extract the package silently and start installing UFT One using the simple UI:

```
UFT_One_15.0.1_Setup.exe -y
```

Extract the package and start installing UFT One silently:

```
UFT_One_15.0.1_Setup.exe -y -gm2 -! /s /qn
```

Extract the package to a specified location, install UFT One silently, customizing the log file location and installation location, and installing several add-ins and features:

```
UFT_One_15.0.1_Setup.exe -InstallPath="C:\15.0.1\extractedUFT" -y -gm2  
-! /s /qn /1*v "C:\UFT_INSTALL.log" INSTALLDIR="C:\UFT_Program" ALLOW_  
RUN_FROM_ALM=1 ALLOW_RUN_FROM_SCRIPTS=1 CONF_MSIE=1 DLWN_SCRIPT_DBGR=1  
ADDLOCAL="Core_Components,Web_Add_in,ALM_Plugin,Test_Results_  
Viewer,Samples,ActiveX_Add_in,Visual_Basic_Add_in,Delphi_Add_in,Flex_  
Add_in"
```

Next steps:

- ["Verify the installation" on page 42](#)

Verify the installation

Use the UFT One Installation Validation Tool to verify the status of your installation.

This chapter includes:

- [Run the UFT One Installation Validation Tool analysis](#) 42
- [Understanding a UFT One Installation Validation Tool report](#) 42

Run the UFT One Installation Validation Tool analysis

After installing UFT One, access the Installation Validation tool as follows:

1. From the **Start** menu, select **All Programs > Micro Focus > Micro Focus Unified Functional Testing > Tools > Additional Installation Requirements**.
2. Click **Run** to run the utility, which handles any configuration prerequisites for working with UFT One. Run through any wizards as needed for your installation.
3. From the **Start** menu, select **All Programs > Micro Focus > Micro Focus Unified Functional Testing > Tools > Micro Focus UFT One Installation Validation Tool**.
4. In the Micro Focus Installation Check Tool dialog, click **Analyze** to generate a report on the current UFT One installation and configuration status.
5. When the report is generated, click one of the following, as needed:
 - **View Report**. View the report as an htm file in a browser.
 - **Send Email**. Send the report to another user. You must have a default email application configured on the UFT One machine to use this option.

Understanding a UFT One Installation Validation Tool report

The UFT One Installation Validation tool validates the installation and configuration state against their expected values.

Values that are returned as expected are highlighted in green, and unexpected values are highlighted in red.

Note: The Installation Validation Tool does not return the data on Remote Agent Settings dialog unless the Remote Agent is run in administrator mode.

See also:

- ["Upgrade UFT One" on page 17](#)
- ["Install UFT One" on page 20](#)

- ["Known issues when installing" on page 44](#)

Known issues when installing

This section describes troubleshooting and limitations for installing UFT One.

This chapter includes:

- [Previous UFT One versions](#) 44
- [Files in use](#) 44
- [Component registration failed](#) 45
- [UFT One installations and other ADM software](#) 45
- [UFT One installations and Microsoft software](#) 46
- [UFT One installations and the Micro Focus UFT Agent \(browser support\)](#) 48
- [UFT installations and 64-bit applications](#) 48
- [UFT One installations and Java](#) 49

Previous UFT One versions

- Ensure that you have the Microsoft update <https://support.microsoft.com/en-us/kb/2999226> installed before installing UFT One.
If the installation fails, repair the Microsoft C++ 2015 Redistributable installation (found in the **<UFT One installation folder>/prerequisites** folder) and try the UFT One installation again.
- Due to the Help documentation being online, the **Help_Documents** silent installation parameter is no longer supported. If you have silent installation scripts that use this parameter, remove it from your scripts to ensure UFT One installs correctly.

Files in use

If the UFT One Files in Use dialog box is displayed during the installation process, select **Close the application and attempt to restart them**.

UFT One automatically closes the applications and continues the installation.

If after restarting, the UFT One Files in Use dialog box lists **Explorer** as the open application, do one of the following:

| | |
|---|--|
| Close the applications and attempt to restart them | Instructs UFT One to automatically close the applications that are needed for the installation. |
| Do not close application. | Instructs UFT One to continue the installation. You must restart your computer after the installation if you select this option. |

Component registration failed

If a message is displayed during installation about component registration failing, do **not** click **OK** to continue.

Instead, check the issue in the **VC2015Prerequisite_yyyymmdd_XXXXXX.log** file in the **%TEMP%** directory. If the log shows that a service did not start correctly, restart the service manually, and start your installation again.

UFT One installations and other ADM software

| | |
|----------------------|--|
| Sprinter | If you are using both UFT One and Sprinter on the same computer, and you modify either UFT One or Sprinter, you must run a Repair for the installation of the other product. |
| ALM | <p>When an ALM client is installed on the same computer as UFT One, uninstalling UFT One may remove the association of movie (.fbr) files.</p> <p>This may prevent you from viewing movies associated with defects in ALM using the Micro Player application.</p> <p>Workaround: Re-associate the movie files with the Micro Player application from the Windows File Options dialog box.</p> |
| UFT Developer | <ul style="list-style-type: none">• In the Custom Setup screen, it is possible to select the UFT Developer Visual Studio or Eclipse plugins even if you do not have the relevant IDE installed at the time of the installation. <p>If you install the IDE later, you will not have the UFT Developer plugin available.</p> <p>Workaround: After installing the required IDE, run a Repair for the installation.</p> <ul style="list-style-type: none">• Make sure to use the new syntax when silently installing UFT Developer as part of the UFT One installation. <p>For details, see "Commands for UFT Developer components" on page 35.</p> <p>If you encounter an error similar to this one, make sure you did not use the old LeanFT silent installation command syntax:</p> <pre>Error: The installer has encountered an unexpected error installing this package. This may indicate a problem with this package. The error code is 2711. The arguments are: LeanFT</pre> |

UFT One installations and Microsoft software

| Software | UFT instructions |
|-------------------|--|
| Windows 10 | <ul style="list-style-type: none">• When installing UFT One on a Windows 10 operating system, you must close Cortana and the Action Center before performing the UFT One installation.• You must have administrative permissions to connect to ALM from UFT One on Windows 10. Connect to ALM with Administrator permissions immediately after installing UFT One.• In some cases, after a Windows upgrade (for example from 1803 to 1903) UFT One no longer works properly. Root cause: The Windows upgrade deleted some registry keys required by UFT One. Workaround: Repair the UFT One installation:<ul style="list-style-type: none">• Using the installation wizard: In the list of programs installed on your computer, select to Change or Modify Micro Focus Unified Functional Testing. In the UFT One setup program that runs, select the option to Repair the program.• Using a command line: <code>MSIEXEC /q /fa <UFT One Installation files>\Unified Functional Testing\MSI\Unified_Functional_Testing_x<64 or 86>.msi</code> <p>Note: If you need to avoid an installation repair, contact the Micro Focus support team to obtain an execution script that fixes this issue.</p> |

| Software | UFT instructions |
|--|--|
| <p>pdm.dll</p> | <ul style="list-style-type: none"> • If version 6.0.0.8169 of the pdm.dll is found on your computer, the setup program will recognize this during installation and will instruct you download the corrected DLL from the Microsoft site. For more details, see http://support.microsoft.com/kb/q293693/. • To debug GUI tests in UFT One, ensure that you have the most recent version of the pdm.dll file installed and registered. The pdm.dll file is installed and registered with Microsoft Visual Studio and Microsoft Office, and installed (but not registered) with Microsoft Internet Explorer. If your currently registered version is lower than 9: <ol style="list-style-type: none"> a. Uninstall the Microsoft Script Debugger (if installed). b. Perform a repair installation of Microsoft Visual Studio or Microsoft Office. Check the registry for pdm.dll version: HKEY_CLASSES_ROOT\CLSID\{78A51822-51F4-11D0-8F20-00805F2CD064}\InprocServer32 If you need to use the pdm.dll file installed with Microsoft Internet Explorer, do the following: <ol style="list-style-type: none"> a. Ensure that you have administrator privileges. b. Locate the pdm.dll file, usually located either in c:\program files (x86)\internet explorer\ or c:\program files\internet explorer. c. Move the pdm.dll file and the msdbg2.dll file from the same folder to a different location. d. Run the following commands: regsvr32 <full path to pdm.dll>\pdm.dll regsvr32 <full path to pdm.dll>\msdbg2.dll |
| <p>Microsoft Office 64-bit</p> | <p>To use UFT One and Microsoft Office 64-bit on the same machine, UFT One must be installed first.</p> |
| <p>Windows 8.x or higher / Windows Server 2012 R2</p> | <p>When using UFT One on Windows 8.X or higher or Windows Server 2012 R2, if you want to use API tests and components, make sure that you have MSU (Microsoft Update) KB2887595 installed.</p> |

UFT One installations and the Micro Focus UFT Agent (browser support)

| Browser | UFT instructions |
|------------------------|---|
| Google Chrome | <p>If you are testing applications in Google Chrome version 31 or later, Chrome automatically downloads and installs the Micro Focus UFT Agent for Google Chrome the first time you open Chrome after UFT One is installed.</p> <p>In the following cases, you must manually enable the Micro Focus UFT Agent for Google Chrome extension:</p> <ul style="list-style-type: none">• You have no Internet connection.• You have not enabled the automatic updates for Google Chrome.• You are using Google Chrome version 30 or earlier. <p>For details on manually enabling the extension, see the task on How to Enable the Micro Focus UFT Agent for Google Chrome Extension in the Web section of the <i>Unified Functional Testing Add-ins Guide</i>.</p> |
| Mozilla Firefox | <p>The first time you open Firefox after UFT One is installed, accept the prompt to install the Micro Focus UFT Agent for Firefox.</p> |
| General | <p>To use the latest Micro Focus UFT Agent browser extension, make sure its older version, the Functional Testing Agent extension is not installed. If both extensions are installed, manually remove the older before enabling the new.</p> |

UFT installations and 64-bit applications

| | |
|---|---|
| Installing with administrator privileges | <p>UFT One loses support for 64-bit applications if a user with administrator privileges installs the Unified Functional Testing Add-in for ALM, or performs a Repair operation on the Run Results Viewer, and then a user runs UFT One on that same computer without administrator privileges.</p> <p>Workaround: Log in as an administrator and do one of the following: Repair UFT One or run <UFT Oneinstallation>\bin64\Mediator64.exe.</p> |
| 32-bit and 64-bit applications | <p>If your computer has two versions of an application, where one is 32-bit and the other is 64-bit, UFT One always opens the 32-bit version.</p> <p>This occurs when the operating system performs a redirect from the Program Files folder to the Program Files (x86) folder, and from the System32 folder to the SysWow64 folder.</p> <p>Workaround: To specify a 64-bit version, make sure that the step explicitly states the path to the 64-bit application.</p> |

| | |
|--|--|
| .NET / WPF Add-in extensibility | When working with .NET or WPF Add-in extensibility for a 64-bit Windows Forms process, the custom server DLLs must be built using the Any CPU option. |
|--|--|

UFT One installations and Java

When re-installing or upgrading the JRE on a machine with UFT One installed, you might encounter error 1603 preventing the JRE installation to complete.

This can be caused by an interference between the UFT One Java environment variables and the Java installer.

To successfully complete the installation, rename the UFT One Java environment variables, perform the JRE installation and restore the variable names.

To temporarily rename the UFT One Java environment variables:

1. On your Windows Desktop, right-click **My Computer** or **This PC** and select **Properties**.
2. Select the **Advanced** tab.
3. Click the **Environment Variables...** button.
4. Look for the following environment variables both under the user variable list and the system variables list and edit their names:
 - _JAVA_OPTIONS
 - Java_Tool_Options
 - IBM_Java_Options
5. Install the JRE.
6. Once the installation is completed, change the environment variables names back to their original names.

UFT installation in languages other than English

When installing UFT One in languages other than English, the TTF16.ocx file is not registered by default. To avoid errors in these cases, do the following before beginning your installation:

1. Browse to the Windows Welcome screen and new user account settings. You may be able to find this in your Windows **Region** or **Region and Language** control panel settings.
2. Click **Copy settings...** and select to copy your current settings to the **Welcome screen and system accounts**.

See also:

- ["Known issues with UFT One licensing" on page 73](#)

UFT One licensing

This section describes the different types of UFT One licenses, where to view your license information, and how to install licenses.

This chapter includes:

- [UFT license types](#) 50
- [View license information](#) 50
- [AutoPass License server](#) 50

UFT license types

UFT One supports various editions and types of licenses. Supported licenses include seat licenses for individual users, as well as concurrent licenses taken from a licensing server pool.

Demo licenses are available for 30 days after installing UFT One for the first time (60 days in UFT One 15.0). This demo license is a seat license. If you need a demo concurrent license, contact your UFT One sales representative or partner.

For more details, see ["Seat vs. concurrent licenses" on page 52](#) and ["License editions" on page 54](#).

For details about installing and configuring licenses, see:

- ["Manage licenses with the wizard" on page 58](#)
- ["Manage licenses with the command line" on page 63](#)
- ["Configure license behavior" on page 66](#)

View license information

To view details about your current license:

1. In UFT One, select **Help > About Unified Functional Testing**.
2. Click **License**.

If at least one of your licenses is about to expire, UFT One displays the date of the license closest to expiration.

AutoPass License server

Concurrent licenses require the use of the AutoPass License Server. If you are upgrading to UFT One 14.50 or later, you must upgrade your AutoPass version to AutoPass version 10.7 or later.

Download the installation from the [Micro Focus ITOM Marketplace](#) (requires login).



Caution: Earlier versions of UFT One can be used with AutoPass version 10.7 only after configuring SSL. For details, see the [AutoPass 10.7 SSL Communication Support document](#) (requires login).

For more details, such as proxy settings or managing licenses and users, see the [AutoPass License Server online documentation](#).



See also:

- ["Known issues when installing" on page 44](#)
- ["Licensing FAQs" on page 69](#)
- ["Known issues with UFT One licensing" on page 73](#)
- [UFT One Community Discussions: Search for license related issues](#)
- [Blog: Take a deep dive into Unified Functional Testing's new license management](#)

Seat vs. concurrent licenses

This topic describes UFT One seat and concurrent licenses, and can help you select the best type of license for your needs.

This chapter includes:

- [Seat licenses](#)52
- [Concurrent licenses](#)52

Seat licenses

Seat licenses are machine-specific licenses, based on a specific locking code per computer.

The key must be entered once only, and provides one installation per key.

A computer with multiple bootable partitions may generate a different locking code for each partition. When obtaining a seat license key, you must use the locking code for the partition on which you will be using UFT One or UFT Developer.

Seat licenses and Windows servers

If you install a seat license on a Windows server, the seat license will be consumed by the first user who logs into the Windows server.

Limited seat licenses

If you install a time-limited seat license, do not modify the date on your computer. Doing so will block your active seat license and prevent future seat license installations on that computer. For more information, contact your UFT One license supplier.

MAC address or host name changes

If you modify the MAC address or host name of the computer after installing a seat license, you must regenerate and install your seat licenses again.

Concurrent licenses

Concurrent licenses are taken from the AutoPass License Server on a per-session basis. You must have an active network connection to install and access concurrent licenses.

Each time UFT One or UFT Developer starts, it tries to connect to the AutoPass License Server for an available license, which regulates the number of licenses currently in use.

The license is returned to the AutoPass License Server when UFT One or UFT Developer is closed. Additionally, concurrent licenses are released when UFT One or UFT Developer is idle, with no mouse or keyboard activity, for a specified amount of time.

If you need to use your FT tool without access to the internet, use one of the following instead:

| | |
|--------------------------------|--|
| Commuter license | If you know that you will need access to UFT One or UFT Developer without internet, check out a commuter license beforehand. Commuter license keys are entered once, and provide use for a single installation of UFT One or UFT Developer, for a limited time period. The license key is based on the machine identification, and is specific for the computer making the request. |
| Remote commuter license | If you find yourself without access to the internet unexpectedly, have another user with a connection check out a commuter license for you. This is called a remote commuter license , and must be sent to you for you to use with your FT tool. |

Both commuter and remote commuter licenses expire at 23:59 of the expiration day. After the commuter license expires, UFT One and UFT Developer automatically return to the previously used license type.



Tip: You can track license usage across your network (for your FT tools as well as other products). For details, see the [AutoPass License Server online documentation](#).



See also:

- [Blog: Take a deep dive into Unified Functional Testing's new license management](#)
- [AutoPass License Server online documentation](#)

License editions

ADM Functional Testing tools support a variety of license editions, each bundled with a different subset of functional testing features.

This chapter includes:

- [Supported license editions](#) 54
- [Upgrading licenses from before UFT 14.00](#) 55
- [Licensing fallback mechanism](#) 55

Supported license editions

The following table describes the products available with each license edition.

| Includes the use of these products: | License names | | |
|---|---------------|---------|---------------|
| | UFT Ultimate | UFT One | UFT Developer |
| UFT One | ✓ | ✓ | |
| UFT Developer | ✓ | ✓ | ✓ |
| Sprinter | ✓ | ✓ | |
| BPT | ✓ | ✓ | |
| UFT Mobile (for functional testing purposes only) | ✓ | | |

Additionally, use a **UFT Runtime Engine** license when you need to run UFT One or UFT Developer tests only.

The **UFT Runtime Engine** license does not enable you to create or edit tests, or access the UFT One IDE or UFT Developer IDE plug-ins.

Note:

- The **UFT Ultimate** license is available only as a concurrent license.
- Sprinter is available for **UFT Ultimate** or **UFT One** concurrent licenses only.
- When using BPT with UFT One, you must also have a BPT license on your ALM server.

Upgrading licenses from before UFT 14.00

| | |
|-----------------------------------|---|
| Backwards compatibility | <p>If you are upgrading, and currently have an FT, QTP, or UFT license, you are not required to migrate to one of the new license types. UFT One will continue to function with your existing license.</p> <p>Customers with legacy FT or QTP licenses can continue to use their existing functionality. Customers with legacy UFT licenses are limited to UI testing only. In such cases, we recommend upgrading to a UFT One license to enable all UFT One features.</p> <p>UFT and LeanFT licenses will be automatically renamed as follows:</p> <ul style="list-style-type: none">• UFT license: Your license is automatically renamed to the UFT One license.• LeanFT license: Your license is automatically renamed to the UFT Developer license |
| Device ID - based licenses | <p>Starting in UFT 14.00, UFT One supports concurrent licenses based on your device ID, in addition to the License Server IP address.</p> <p>However, you cannot use both IP address-based and device ID-based licenses simultaneously.</p> <p>Once you've installed an ID-based concurrent license on your AutoPass License Server, any IP address-based licenses for the same features are automatically archived.</p> <p>When upgrading, select the type of licenses you want to use moving forward, and migrate your licenses as needed.</p> <p>For details, see the AutoPass License Server online documentation.</p> |

Licensing fallback mechanism

When starting UFT One or UFT Developer, the AutoPass License Server attempts to consume the exact license edition configured on the UFT One or UFT Developer machine, such as the **UFT One** or **UFT Developer**.

If you are concerned about the availability of the license edition configured on your tool's machine, modify this configuration as described in "[Configure the licensing fallback mechanism](#)" on page 66.

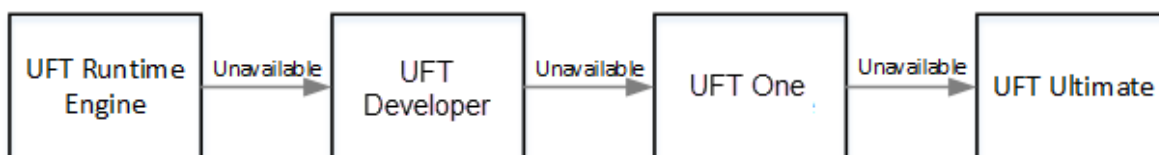
When the fallback mechanism is enabled, licenses are consumed as follows:

When starting UFT One

- If you have a **UFT One** license installed, the License Server looks for the **UFT One Ultimate** license as a fallback.
- If you have a **UFT Runtime Engine** or **UFT Developer** license installed, no fallback is supported.

When starting UFT Developer

When starting the UFT Developer runtime engine, licenses are consumed in the following order on the License Server, starting with the license configured on your machine:



Note:

- The licensing fallback mechanism is relevant only when working with concurrent licenses.
- The licensing fallback mechanism is disabled by default.

Sample scenario 1: UFT Developer license configured on the UFT Developer machine

If the **UFT Developer** license is configured on the machine, but there is no available **UFT Developer** license on the License Server, UFT Developer tries to consume a **UFT One** license.

In turn, if no **UFT One** license is available, UFT Developer tries to consume a **UFT Ultimate** license.

Sample scenario 2: UFT Runtime license configured on the UFT Developer machine

If the **UFT Runtime Engine** license is configured on the UFT Developer machine but there is no available **UFT Runtime Engine** license, UFT Developer tries to consume a **UFT Developer** license.

In turn, if there is no available **UFT Developer** license, UFT Developer tries to consume a **UFT One** license, and so on.



See also:

- ["UFT One licensing" on page 50](#)
- ["Configure license behavior" on page 66](#)

- ["Licensing FAQs" on page 69](#)
- [Blog: Take a deep dive into Unified Functional Testing's new license management](#)

Manage licenses with the wizard

The Functional Testing License Wizard enables you manage licenses for UFT One or UFT Developer.

Installing licenses requires administrator permissions.

This chapter includes:

Set seat license mode

Set seat license mode when you have a machine-specific license, based on a specific locking code per computer. For more details, see ["Seat vs. concurrent licenses" on page 52](#).

1. Access the wizard from the **Start** menu or your **<UFT One / UFT Developer installation folder>\bin\HP.UFT.LicenseInstallationWizard.exe**.
2. In the License Wizard start screen, select **Seat license**.
3. In the Seat License installation screen, do one of the following:
 - Click **Load License Key File** and select your license key **.dat** file that you received from your sales representative.
Paste the license key in the edit field.
 - If you don't yet have a license key, follow the instructions in the expanded **How can I get a license key file** section.
4. Verify that the license key is valid, and click **Install**.
5. When complete, restart UFT One or UFT Developer to apply the new license.

Set concurrent license mode (wizard)

Set the concurrent license mode to have UFT One consume a concurrent license from the AutoPass License Server.

For more details, see ["Seat vs. concurrent licenses" on page 52](#).

Prerequisites

- You must have a UFT One license installed on the AutoPass License Server.
For details, see the [AutoPass License Server online documentation](#).
- Make sure you are connected to the network and can access the AutoPass License Server.

Set the concurrent license mode

1. Access the wizard from the **Start** menu or your **<UFT One / UFT Developer installation folder>\bin\HP.UFT.LicenseInstallationWizard.exe**.

2. In the License Wizard start screen, select **Concurrent license**.
3. In the Concurrent License Installation screen, enter the License Server address in the following format:

<license server address>:<port>

Default port = **5814**

Note: The address format must be identical to the one used in the **Main** tab of the License Server Configuration pane.

For details, see the [AutoPass License Server online documentation](#).

4. Click **Connect** to connect to the License Server.
5. (Optional) Define a secondary License Server.
If your primary License Server is unavailable, UFT One or UFT Developer will connect to the secondary License Server to obtain a license. For details, see the [AutoPass License Server online documentation](#).
Expand the **Add Redundant Server** link and enter the address for the secondary License Server.
6. From the product license drop-down list, select the appropriate license and click **Install**.
7. If UFT One or UFT Developer was running while you defined the license consumption, restart it to apply the new license.

Check out and consume a Commuter license

- ["Check out and consume a Commuter license" above](#)
- ["Return a Commuter license" on the next page](#)

Check out and consume a commuter license

Commuter licenses can be checked out only if your License Server has available concurrent licenses.

1. **Prerequisite:** Make sure you are connected to the network and can access the AutoPass License Server.
Alternatively, if you cannot access the License Server, see ["Check out and consume a Remote Commuter license" on page 61](#).
2. Access the wizard from the **Start** menu or your **<UFT One / UFT Developer installation folder>\bin\HP.UFT.LicenseInstallationWizard.exe**.
3. In the License Wizard start screen, select **Additional Options > Commuter License**.

4. In the Commuter License Installation screen, enter the License Server address in the following format:

<license server address>:<port>

Default port = **5814**

Note: The address format must be identical to the one used in the **Main** tab of the License Server Configuration pane.

For details, see the [AutoPass License Server online documentation](#).

5. Click **Connect** to connect to the License Server.
6. After the list of available licenses is displayed, ensure that **Available** is selected below the License Server address field.
7. From the list of available licenses, select the licenses you need.
8. In the **Check out licenses for (days)** field, enter the number of days for which you need the commuter license.
Maximum = 180 days
9. Click **Check Out**, and then **Next** to define the license consumption.
10. If UFT One or UFT Developer was running while you defined the license consumption, restart it to apply the new license.

Return a Commuter license

When you are done with a license, return it back in to the license server.

This process checks in all of the licenses that are checked out. If you still need some of these licenses, check them out again.

1. **Prerequisite:** Make sure you are connected to the network and can access the License Server.
Alternatively, if you cannot access the License Server, see "[Check out and consume a Remote Commuter license](#)" on the next page.
2. Access the wizard from the **Start** menu or your **<UFT One / UFT Developer installation folder>\bin\HP.UFT.LicenseInstallationWizard.exe**.
3. In the License Wizard start screen, select **Additional Options > Commuter License**.
4. In the Commuter License Installation screen, the License Server address should already be displayed and connected.

If needed, enter the License Server address in the following format:

<license server address>:<port>

Default port = **5814**

Note: The address format must be identical to the one used in the **Main** tab of the License Server Configuration pane.

For details, see the [AutoPass License Server online documentation](#).

5. In the area that lists the licenses, ensure that **Checked Out** is selected.
For example:
6. Click **Check In All Licenses**, and then **Next**. The list of checked out licenses is cleared.

Check out and consume a Remote Commuter license

- ["Check out and consume a Remote Commuter license" above](#)
- ["Return a Remote Commuter license" on the next page](#)

Check out and consume a remote commuter license

Remote commuter licenses can be checked out only if your License Server has available concurrent licenses.

1. Access the wizard from the **Start** menu or your **<UFT One / UFT Developer installation folder>\bin\HP.UFT.LicenseInstallationWizard.exe**.
2. In the License Wizard start screen, select **Additional Options > Remote Commuter license**.
3. In the Remote Commuter License Installation screen, ensure that **Generate Request File** is selected.
4. From the list of available licenses, select the license you need.
5. In the **Check out licenses for (days)** field, enter the number of days for which you need the commuter license.
Maximum = 180 days
6. Click **Generate Request File**.
7. Click the link that appears below this button to open the folder containing the request file.
Send the generated **.lcor** request file to a License Server administrator or to a user with access permissions to the License Server.
The other user must access the Licensing Server to check out and send you a license key file.
8. When you receive the license key file, save it locally.
Click **Install License**, and click **Choose File** to browse to the text file you received.
9. Click **Install** to install the license.
10. If UFT One or UFT Developer was running while you defined the license consumption, restart it to apply the new license.

Return a Remote Commuter license

Perform this procedure after a License Server administrator has checked out your license.

1. Access the wizard from the **Start** menu or your **<UFT One / UFT Developer installation folder>\bin\HP.UFT.LicenseInstallationWizard.exe**.
2. In the License Wizard start screen, select **Additional Options > Remote Commuter license**.
3. In the Remote Commuter License Installation screen, ensure that **Generate Request File** is selected.
4. In the Generation screen, click **Generate and Save Check In Request**, and save the **.Icfr** check in request file.
5. Click **Next** to uninstall the license.

The license wizard reports that the remote commuter license is uninstalled. UFT One or UFT Developer reverts to the previous license type as the active license.



See also:

- ["Seat vs. concurrent licenses" on page 52](#)
- [Blog: Take a deep dive into Unified Functional Testing's new license management](#)

Manage licenses with the command line

Consume and verify the statuses of seat or concurrent licenses directly from the command line. Installing licenses requires administrator permissions.

This chapter includes:

- [Run the License Installer from the command line](#) 63
- [Define seat licenses with the command line](#) 63
- [Consume concurrent licenses with the command line](#) 64

Run the License Installer from the command line

Run the License Installer, **LicenseInstall.exe**, as follows:

```
"<UFT One or UFT Developer installation  
directory>\bin\HP.UFT.LicenseInstall.exe"
```

Append the relevant command and set of parameters described below:

- ["Define seat licenses with the command line" below](#)
- ["Consume concurrent licenses with the command line" on the next page](#)

Define seat licenses with the command line

Define seat licenses in the command line by running the License Installer and appending the following:

```
seat "<license key string>"
```

For example:

```
"C:\Program Files (x86)\Micro Focus\Unified Functional  
Testing\bin\HP.UFT.LicenseInstall.exe" seat "<key> \" Micro Focus  
Unified Functional Testing"
```

Note:

- If the license key contains a quotation mark character (") in the license key string, add a backslash character (\) before the quotation mark.
- If the license key file is saved locally, run the License Installer, appending the following code and wrapping the path to the license key file in quotes:

```
seat "<path to the license key file>"
```

For example:

```
"C:\Program Files (x86)\Micro Focus\Unified Functional  
Testing\bin\HP.UFT.LicenseInstall.exe" seat "Downloads\UFT-  
licfile.dat"
```

For more details, see ["UFT One licensing" on page 50](#).

Consume concurrent licenses with the command line

These steps configure UFT One to consume concurrent licenses installed on the AutoPass License Server.

Verify available licenses on the AutoPass License Server

Run the License Installer, appending the following:

```
licenses <primary server name/address>:<port> [<secondary server name  
address>:<port>]
```

For example:

```
"C:\Program Files (x86)\Micro Focus\Unified Functional  
Testing\bin\HP.UFT.LicenseInstall.exe" licenses 11.11.111.111:5814
```

Note: **secondary server name/address** and **port** are optional.

The available licenses are displayed by unique ID and version.

Consume a concurrent license

1. Run the License Installer to [verify which licenses are available](#) on the AutoPass License Server, as described above.

The available licenses are displayed by unique ID and version.

2. Run the License Installer again, this time appending the following command and parameters:


```
concurrent <license ID> <license version> <primary server  
name/address>:<port> [<secondary server name/address>:<port>]  
[/force]
```

| | |
|----------------|---|
| Address | Optional. The address format must be identical to the one used in the Main tab of the AutoPass License Server Configuration pane. For details, see the AutoPass License Server online documentation . |
| Ports | Optional. The Default port for the primary and secondary servers is 5814 . |
| /force | Optional. /force saves the license installation information even if the current installation fails. In subsequent sessions, UFT One or UFT Developer will check the listed license server for the listed license. |

For example:

```
"C:\Program Files (x86)\Micro Focus\Unified Functional  
Testing\bin\HP.UFT.LicenseInstall.exe" concurrent 11.11.111.111:5814  
/force
```

Modify server connection protocol

Run the License Installer, appending:

- Primary license server: **config protocol.primary <protocol>**
- Secondary license server: **config protocol.second <protocol>**

where **<protocol>** is **http** or **https** as needed.



See also:

- ["Seat vs. concurrent licenses" on page 52](#)
- [Blog: Take a deep dive into Unified Functional Testing's new license management](#)

Configure license behavior

This topic describes how to configure your UFT One license behavior.

If you are installing UFT Developer on Linux or Mac, or UFT Developer standalone, see the [UFT Developer Help Center](#) instead.

Note: Some folder paths intentionally include previous company branding, due to backward compatibility considerations.

This chapter includes:

- [General license settings](#) 66
- [Configure the licensing fallback mechanism](#) 66
- [Configure licensing timeouts](#) 67

General license settings

General licensing behavior is managed in the AutoPass license configuration file, located on your UFT One or UFT Developer machine.

This file is located at **C:\ProgramData\Hewlett-Packard\UFT\License\autopass.txt** and includes details about supported options and values.

Caution: Configure this file with caution.
Incorrect configuration may cause UFT One or UFT Developer to behave unexpectedly, or prevent UFT One or UFT Developer from starting.

Additional configurations include:

- "[Configure the licensing fallback mechanism](#)" below. Perform this procedure if your concurrent license server has multiple license editions installed, and you want to always ensure that your product can find an available license.
- "[Configure licensing timeouts](#)" on the next page. Define the timeout period after which your license is released.

Configure the licensing fallback mechanism

Define whether your system uses the licensing fallback mechanism for UFT One and UFT Developer as follows:

1. On your AutoPass License Server machine, browse to the **C:\ProgramData\autopass\apls\licenseserver\data\conf\UFT.xml** file.

Note: This file is available with AutoPass versions 9.3 or higher.

2. Edit and add keys and values to set the following values to **true**, as needed:

| Product | License type | Key |
|----------------|----------------|---------------------------------------|
| UFT One | Any | license.fallback.uft.rte |
| Runtime Engine | Any | license.fallback.rte.rte |
| UFT Developer | UFT Developer | license.fallback.leanft.leanft |
| UFT Developer | Runtime Engine | license.fallback.leanft.rte |

Edit and add keys and values in the following format:

```
<entry key="{Key}">{Value}</entry>
```



Example: To enable the fallback mechanism when you want to use **UFT One** and you have **any** of the license types configured, set the relevant key value to **true**, as follows:

```
<entry key="license.fallback.uft.rte">true</entry>
```

Finding a Runtime Engine license

If the fallback mechanism is enabled, and an available **Runtime Engine** license is found, you will only be able to run your tests, with no creation or editing abilities.

Ensure that you can always access the UFT One IDE or the UFT Developer IDE plug-ins by doing one of the following:

- Disable the fallback mechanism by setting the key values to **false** (this is the default).
- Contact your License Server administrator to ensure that any UFT One Runtime Engine licenses are blocked or are in use.

For more details, see ["Licensing fallback mechanism" on page 55](#).

Configure licensing timeouts

Define the number of minutes, with no keyboard or mouse input, after which UFT One or UFT Developer releases the currently used concurrent license.

Configure a timeout for UFT One or UFT Developer

1. On your UFT One or UFT Developer machine, open the **LicenseSettings.xml** file at **C:\ProgramData\Hewlett-Packard\UFT\License\LicenseSettings.xml** for editing.
2. Update the following parameters with the number of minutes you want to define for your timeout:

| | |
|-------------------------------------|---|
| LicenseAutoReleaseInterval | The number of minutes after which a confirmation message appears, warning the user that the license is about to time-out. |
| ConfirmLicenseReleaseTimeout | The number of minutes after which the confirmation message closes, and the license is released. |

Configure a timeout for your AutoPass concurrent license server

On your AutoPass License Server machine, browse to the **UFT.xml** file at **C:\ProgramData\autopass\apls\licenseserver\data\conf\UFT.xml**.

Open the file for editing, and add the following line of code:

```
<entry key="autorelease.interval"><#></entry>
```

where **#** is the number of minutes of inactivity.



Example: The following syntax defines that your license is released after 10 minutes of inactivity.

```
<entry key="autorelease.interval">10</entry>
```

See also:

- ["Licensing FAQs" on page 69](#)
- ["Known issues with UFT One licensing" on page 73](#)
- ["UFT One licensing" on page 50](#)
- [Blog: Take a deep dive into Unified Functional Testing's new license management](#)

Licensing FAQs

This topic answers a number of frequently asked questions about using and installing Functional Testing licenses.

Note: Some folder paths intentionally include previous company branding, due to backward compatibility considerations.

This chapter includes:

- [UFT One Help Center licensing scope](#) 69
- [Can I use my old license \(from before UFT One 12.50\) with the new License Server?](#) 69
- [Which license should I install?](#) 70
- [How do I install the AutoPass License Server?](#) 70
- [If I am using concurrent licenses, how do I connect to the License Server?](#) 70
- [How do I install licenses if I am deploying UFT One across an enterprise network?](#) 71
- [How do I manage the concurrent licenses on the License Server?](#) 71
- [Can I configure license behavior myself?](#) 71
- [Can I set up my License Server to work with a redundant \(backup\) License Server?](#) 71
- [Can I use the AutoPass License Server with a proxy?](#) 71
- [What is a cleanup license?](#) 72
- [My demo license is expiring early. What can I do?](#) 72

UFT One Help Center licensing scope

This guide describes how to access licenses on the AutoPass License Server from UFT One and UFT Developer.

For full details on AutoPass License Server capabilities, such as proxy settings, license installation and management, and user management, see the [AutoPass License Server online documentation](#).

Can I use my old license (from before UFT One 12.50) with the new License Server?

No. UFT One 12.50 has changed the license mechanism and the concurrent license server to the AutoPass License Server.

Prior versions of UFT One used the Sentinel Concurrent License Server.

Note: The AutoPass License Server and accompanying documentation is provided with the UFT One Setup program.

In order to use your licenses with versions of UFT One 12.50 and later, or to install them on the AutoPass License Server, you must upgrade your licenses.

Which license should I install?

Use the following table to help determine which type of license to install. For details about license types, see ["UFT One licensing" on page 50](#).

| Scenario | License Type to Install |
|---|--|
| Are you assigned a specific license (with its own unique license key)? | Seat |
| Are you part of a group that uses licenses on an as-needed basis? | Concurrent. You will need the IP address of your License Server where the licenses are installed. |
| Are you assigned the IP address from which to check out a license? | Concurrent |
| Are you traveling and will not have access to a license server? | Concurrent Commuter |
| Are you already traveling and cannot access the License Server to get a license? | Remote Commuter |

How do I install the AutoPass License Server?

Download the AutoPass License Server from the [Micro Focus ITOM Marketplace](#) (login required).

For full details, see the [AutoPass License Server online documentation](#).

If I am using concurrent licenses, how do I connect to the License Server?

Run the Functional Testing License Wizard and enter the License Server IP address. This checks the connection to the License Server, and also provides a list of possible licenses to install.

After installing your concurrent license, UFT One or UFT Developer checks the specified License Server address each time UFT One or the UFT Developer runtime engine starts, taking the requested license.

For more details, see ["Manage licenses with the wizard" on page 58](#).

How do I install licenses if I am deploying UFT One across an enterprise network?

UFT One provides a command-line tool that enables you to install UFT One licenses without using the License Wizard interface.

For details on the commands to install these licenses, see ["Manage licenses with the command line" on page 63](#).

The command line license installation is supported for seat and concurrent licenses.

How do I manage the concurrent licenses on the License Server?

The AutoPass License Server has a full Web-based interface that enables you to install, manage, administer, and track usage of all your licenses (both concurrent and commuter).

For details, see the [AutoPass License Server online documentation](#).

Can I configure license behavior myself?

Yes. For details, see ["Configure license behavior" on page 66](#).

Can I set up my License Server to work with a redundant (backup) License Server?

Yes. To do this, install the License Server on two separate servers, and then set one server to be the primary and the other to be the redundant server. This configuration is done in the AutoPass License Server Web UI.

You also can supply this information to UFT One or UFT Developer in the License Wizard, which enables UFT One or UFT Developer to take a concurrent license from the redundant License Server in the event that the primary License Server is not available.

For details, see the [AutoPass License Server online documentation](#).

Can I use the AutoPass License Server with a proxy?

Yes. Set the proxy settings in the **autopass.txt** file, located on your UFT One or UFT Developer machine, at **C:\ProgramData\Hewlett-Packard\UFT\License\autopass.txt**.

See the comments inside this file for details on setting the proxy settings. Be sure to uncomment the relevant lines and define their values.

Note: For Linux/Mac installations of UFT Developer, see the [UFT Developer Help Center](#).

What is a cleanup license?

If your computer is clock-tampered after installing the License Server, both the License Server and UFT One's or UFT Developer's connection to the License Server do not work.

In this case, you must get a cleanup license for your License Server. This enables you to reset all license capabilities.

For details on cleanup licenses, contact your UFT One license supplier.

My demo license is expiring early. What can I do?

If you are having problems with the trial license period, ensure the following:

- Ensure that you have full permissions to the UFT One or UFT Developer installation folder and all its subfolders
- Ensure that you have not changed the system time. If you have moved the system time, the license mechanism can reduce the trial period based on the number of days that were back-dated.

Note:

UFT One 15.0: Trial license period is 60 days.

UFT One 15.0.1 and later: Trial license period is 30 days.

 **See also:**

- [Blog: Take a deep dive into Unified Functional Testing's new license management](#)

Known issues with UFT One licensing

Relevant for: GUI testing and API testing

The following known issues exist when working with Functional Testing licenses:

| | |
|---|--|
| UFT One and UFT Developer concurrent installations | <p>If you installed UFT Developer from the UFT One setup program, and you are using a seat license for UFT One, UFT Developer uses the same license.</p> <p>In such cases, you cannot run both UFT One and UFT Developer at the same time.</p> |
| Modifying the computer date | <p>If you install a time-limited seat license, do not modify the date on your computer.</p> <p>Doing so will block your active seat license and prevent future seat license installations on that computer.</p> <p>For questions about this issue, contact your UFT One license supplier.</p> |
| NAT | <p>The License Server does not support the use of Network Address Translation (NAT).</p> |
| Demo licenses | <p>Demo licenses are not included in concurrent licenses, which require an active connection to the AutoPass License Server and a license key installed.</p> |
| Changing types | <p>You must have administrator permissions to change the license type from seat to concurrent or vice versa.</p> |
| Connecting for the first time (UFT One 15.0 only) | <p>When connecting to an AutoPass License Server machine for the first time in a UFT One session, you may see an error message even if the server is available.</p> <p>If you see this error message, try connecting again. Once successful, this error will not reoccur in the current UFT session.</p> <p>AutoPass 10 or later: To prevent the error from happening the next time you open UFT One and try to connect to the license server, consult the AutoPass documentation by downloading this article: TLS1.2_Configuration_For_UFT.docx.</p> |
| "No license" notification in license wizard (UFT One 15.0 only) | <p>When working with AutoPass 10.9, if you reopen the license wizard after successfully installing a concurrent license, you may see a No license notification in the wizard.</p> <p>You can ignore this warning, UFT One will use the concurrent license that you installed successfully.</p> |

If you did not find a solution to your issue here, search for UFT One license issues in the [Micro Focus community](#).

 **See also:**

- ["UFT One licensing" on page 50](#)
- ["License editions" on page 54](#)
- ["Manage licenses with the wizard" on page 58](#)
- ["Manage licenses with the command line" on page 63](#)
- ["Licensing FAQs" on page 69](#)
- [Blog: Take a deep dive into Unified Functional Testing's new license management](#)

Before connecting to ALM

Before connecting to ALM, you may need to modify User Account Control (UAC) settings. You can revert these modifications afterward.

This chapter includes:

- [When to run this procedure](#)75
- [Microsoft Windows 7 and Windows Server 2008 R2](#)75
- [For Microsoft Windows 8.x and Windows Server 2012](#)76
- [For Microsoft Windows 10](#)76
- [Enable UAC again if required](#)76

When to run this procedure

You must perform this procedure if you intend on running UFT One tests remotely from ALM, and are running UFT One on one of the following operating systems:

- Windows 7
- Windows Server 2008
- Windows Server 2008 R2
- Windows 8.x and higher
- Windows Server 2012

Note: The security changes described in this section should be performed by your System Administrator.

Contact Microsoft Support if you have questions regarding changes in User Account Control (UAC) on any of these operating systems.

Microsoft Windows 7 and Windows Server 2008 R2

Modify UAC settings on Windows 7 or Windows Server 2008 R2 machines as follows:

1. Log in as an administrator.
2. From the Control Panel, select **User Accounts > User Accounts > Change User Account Settings**.
3. In the User Account Control Settings window, move the slider to **Never notify**.
4. Restart the computer to enable this setting to take effect.

For Microsoft Windows 8.x and Windows Server 2012

Modify UAC settings on Windows 8.x and higher, or Windows Server 2012 machines as follows:

1. Log in as an administrator.
2. From the Control Panel, select **User Accounts and Family Safety > User Accounts > Change User Account Control Settings**.
3. In the User Account Control Settings window, move the slider to **Never notify**.
4. In the Control Panel, select **System and Security > Administrative Tools > Local Security Policy**.
5. In the Local Security Policy window, in the left pane, select **Local Policies**.
6. In the Local Policies tree, select **Security Options**.
7. In the right pane, select the **User Account Control: Run all administrators in Admin Approval mode** option.
8. Select **Action > Properties** from the menu bar.
9. In the dialog that opens, select **Disabled**.
10. Restart the computer for your changes to take effect.

For Microsoft Windows 10

Modify UAC settings on Windows 10 machines as follows:

1. Open the registry editor. (Run a **regedit** command)
2. Navigate to the following key: **HKEY_LOCAL_MACHINE\SOFTWARE\Microsoft\Windows\CurrentVersion\Policies\System**.
3. Modify the value of the **EnableLUA** DWORD value and set it to 0.
4. Restart the computer for your changes to take effect.

Enable UAC again if required

After connecting to ALM, return to the User Account Control Settings window to enable UAC again. Restore the slider to its previous position to turn the UAC option on again.

On Windows 10, open the registry editor and set the value of **HKEY_LOCAL_MACHINE\SOFTWARE\Microsoft\Windows\CurrentVersion\Policies\System\EnableLUA** back to 1.

Restart the computer for your changes to take effect.

See also:

- [Application Lifecycle Management](#)
- [ALM Help Center](#)

Send Us Feedback



Let us know how we can improve your experience with the Installation Guide.
Send your email to: docteam@microfocus.com

